

Ge-C1-2a - Ookami-Class Light Cruiser

The Ge-C1-2a Light Cruiser is a variant of the [Geshrinari Shipyards Urufu-Class Light Cruiser](#); it became available in [YE 33](#). The version of this ship re-designed for disaster recovery operations is the RDRS Ge-C1-3a - Ookami-Class Light Cruiser.



About the Ge-C1 Variant

The Ge-C1-2a variant of the Urufu-Class is designed by [Geshrinari Shipyards](#). It called the Ookami-class, Ookami is another word for wolf in [Yamataian](#) The C1-2a had [Star Army of Yamatai](#) restricted technology removed. It is available for purchase by allied factions, government agencies, and civilian organizations. The Ookami-class comes with a basic weapons load and customers can customize the weapon load. The weapon systems it is equipped with are of [Geshrinari Shipyards](#) design.



History

In [YE 33](#) during the refit of the [TCS Urufu](#), [Geshrinari Shipyards](#) decided that the design could have a broader market value. Removing all the [Star Army of Yamatai](#) weapons and replacing a portion of them with their own non-aether weaponry, the Ge-C1-2a took shape. They also decided to offer it with a limited weapon configuration, and to allow the purchaser to customize some features.

Appearance

The Ookami-Class hull is a tapered diamond shape. It is painted a neutral gray and features the [Geshrinari Shipyards](#) logo. It has a pair of wings along the forward hull to improve atmospheric performance. At the base of the wings the two torpedo tubes can be seen. Along the aft there are four [Geshrinari Turbo Plasma Drive](#) painted gray which propel the ship for STL travel. The non-retractable weapons are visible, and on the underside just before the engine pylon are the two clusters of shuttle bays.

Statistical Data

General

- Class: Ookami-class
- Nomenclature: Ge-C1-2a
- Type: Cruiser
- Designers: [Geshrinari Shipyards](#)
- Manufacturer: [Geshrinari Shipyards](#)
- **Organizations using this ship:** [Tamahagane Corporation](#), Allied factions, and Civilian Law Enforcement and Security Organizations with the approval of their respective governments
- **Price: MSRP** 1,500,000 [KS](#) without options

Crew and Accommodations

The Ookami-Class carries 56 Crew and 56 Infantry.

Crew

- Officers: 6
- Crew: 50
- Passengers: 52

Accommodations

There are accommodations for 112 personnel. 500 people can fit aboard in an emergency using some of the other compartments.

Dimensions

- Length: 320 meters (1,050 feet)
- Width: 150 meters (492 feet)
- Height: (Main) 32 meters (105 feet)
- Height: (Overall): 40 meters (131 feet)
- Decks: 7 (4 meters each)

Propulsion and Range

Speeds

- **Sublight Engines:** .375c (~112,422 kilometers per second) (~69,856 miles per second)
 - **Acceleration:** .01 c/sec 0 to max in 75 seconds
- **Continuum Distortion Drive:**
 - **Minimum:** Resting motionless
 - **Cruising Speed:** 15,000c (~1.71 ly/h)
 - **Maximum Speed:** 18,750c (~2.14 ly/h)
- **Hyperspace Drive:** 394,470c (0.75 ly/m)

This ship is equipped with [Anti-FTL field](#) countermeasures.

Durability and Maintenance

Service Lifespan: Estimated 20 years of constant use, possibly longer with refits.

Refit Cycle: Frequent minor updates through the [Geshrinari Shipyards](#) system and a refit once every four to five years.

Damage Capacity

See [Damage Rating \(Version 3\)](#) for an explanation of the damage system.

Hull: 24 Shields: 30 (Threshold 3)

Inside the Ookami

Deck 1

This deck houses the upper sensor array and a [Geshrinari Lounge](#), the lounge covers the forward section of the deck, it is kept clean and has the only windows the Ookami-class features. The windows are made of [Transparent Durandium](#). There is a [two person restroom](#) at each end of the lounge. There are also two large [airlocks](#) in the rear of the deck. A [damage control station](#) is located outside of the sensor array room.

Deck 2

This deck is considered officer country as such it houses the [Large Bridge](#), the [Geshrinari Wardroom](#) and [galley](#) are located behind the bridge, the [Geshrinari Owner's Suite](#), five [Senior crew quarters](#). A [two person restroom](#) is also available for bridge personnel. A [laundry room](#) is also present.

Deck 3

This deck houses the [Engineering](#), [Life support room](#), [Fabrication area](#), twenty five [Crew Cabins](#), [Dining hall](#), [galley](#), [Computer room](#). There are also ten [Ge-X3300 - Type 33 Escape Pods](#).

Deck 4

This deck houses the [Engineering](#), [Life support room](#), [Expanded medical bay](#), [Fitness Center](#). Also located on this deck is [auxiliary control](#) a compact bridge that the command crew can transfer to if the primary bridge is damaged. It is possible to control the ship from the auxiliary control by a single operator. There are also five [Ge-X3300 - Type 33 Escape Pods](#).

Deck 5

Also referred to as the *Crew Deck Alpha* most of the facilities on this deck are living quarters for the extra personnel it has the following: six [Shuttle maintenance bays](#), 6 [Squad Cabin](#), 3 [Crew Cabins](#), 2 [Private Cabins](#), 3 [eight-person communal showers](#), 3 [eight-person communal toilets](#), [Geshrinari Armory](#). There are also ten [Ge-X3300 - Type 33 Escape Pods](#).

Deck 6

Also referred to as *Crew Deck Beta* most of the facilities on this deck are for the support of the extra personnel, it has the following rooms; six [Shuttle launch bays](#), the former armor bay space is left free for the customer to customize. [Fitness Center](#). A [Laundry room](#) is present for these extra personnel.

Deck 7

This deck is taller than the other decks with four meters of space from floor to ceiling. It holds the cargo hold and vehicle bay. It also houses the redundant sensor array and the landing struts.

Magazine

The Ge-C1 is equipped with a [standard magazine](#). It has a capacity to house thirty [Ge-Z1 Series Torpedoes](#), and sixty warheads. It takes fifteen seconds for a torpedo to be transferred from the magazine to the launcher.

Shuttle Bays

The Ge-C1 is equipped with six small shuttle bays. The bays are mounted on three to a side under the

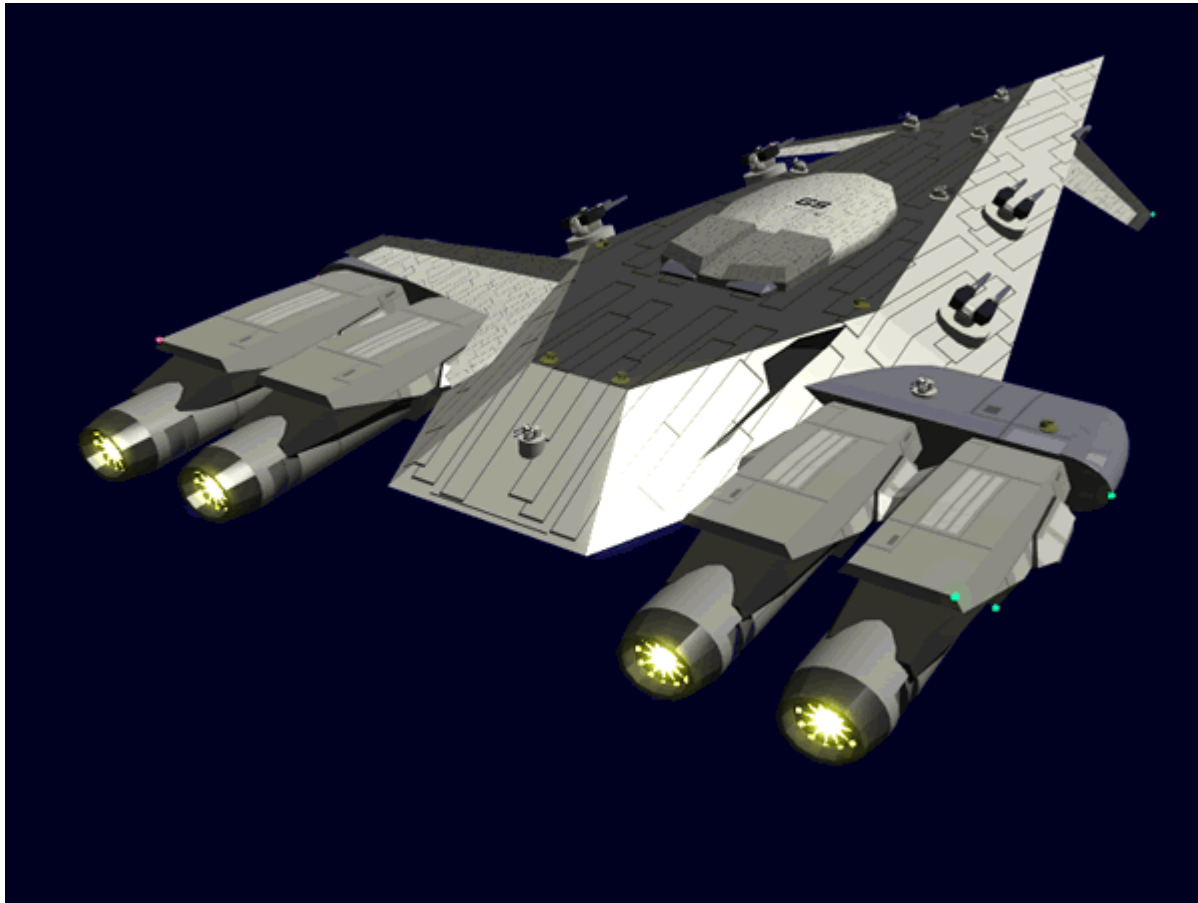
upper hull before the engine pylon. These can house one or two aerospace craft depending on type. They each have an external blast door that protects the bay. Above the bays are the maintenance areas. The vehicle is raised on a platform to the maintenance bay. The platform is also used to rotate the craft when it is lowered into the bay. In the maintenance area a [Star Army Tool Locker](#) is available for each craft.



Passageways

The Ge-C1 uses [Geshrinari Corridors](#) for horizontal movement on the ship. Stairwells and lifts are present for vertical movement.

Systems



Ge-C1-H3300 - Armored Hull

The Ge-C1 is the first warship to be constructed using [Osmiridium](#) for its frame, and a .5-meter-thick hull of [Osmiridium](#). All interior passageways and rooms are surrounded by [Yarvex](#) sheeting and protected from scalar fields by the internal gravity systems. The windows on the Ge-C1 are made of [Transparent Durandium](#).

Ge-C1-E3300A - Computer and Sensor Suite

The Ge-C1 is equipped with a [Ge-Y2-E3300 - Hogosha Quantum Computer System](#). The primary sensor array is located on deck one and the redundant array is on deck seven. A [Geshrinari Psionic Signal Controller](#) is installed.

Emergency Systems

The Ge-C1 is equipped with all [Geshrinari Shipyards](#) emergency systems.

Details	
Item	Notes
Ge-X3300 - Type 33 Escape Pod	25
Ge-Y1-E3104 - Automatic Fire Suppression System	
Geshrinari Blast Shutters	Locations Engineering room Both Bridge and Auxiliary control All shuttle bays Between decks on all vertical passages.
Geshrinari Damage Control Station	Locations Engineering room Both Bridge and Auxiliary control Shuttle maintenance area three on each horizontal hallway (both ends and one in the middle)

Propulsion

Ge-C1-P3300/A Modular Plasma Drives

The Ge-C1 is equipped with four Ge-C1-P3300/A [Geshrinari Turbo Plasma Drive](#) The Ge-C1-P3300/A is a completely modular system which allows the entire drive to be swapped out during repairs. This helps the vessel to be turned around faster after combat.

Ge-C1-P3301 Hyperspace Fold Drive

The Ge-C1 is equipped with a standard [hyperspace fold](#) engine of [Geshrinari Shipyards](#) design.

Ge-C1-P3302 Continuum Distortion Drive

The Ge-C1 is equipped with a [Geshrinari Combined Field System](#) which allows for [Continuum Distortion Drive](#) FTL.

Ge-C1-P3303 Maneuvering Thrusters

The Ge-C1 is equipped with [Geshrinari Maneuvering Thrusters](#) for attitude control and station keeping.

Ge-C1-S3300 CFS Shield

The Ge-C1 is equipped with a [Geshrinari Combined Field System](#) that during combat is used to protect the vessel.

Ge-C1-V3300 - Life Support System

The Ge-C1 is equipped with a [Ge-Y1-V3100 - Life Support System](#).

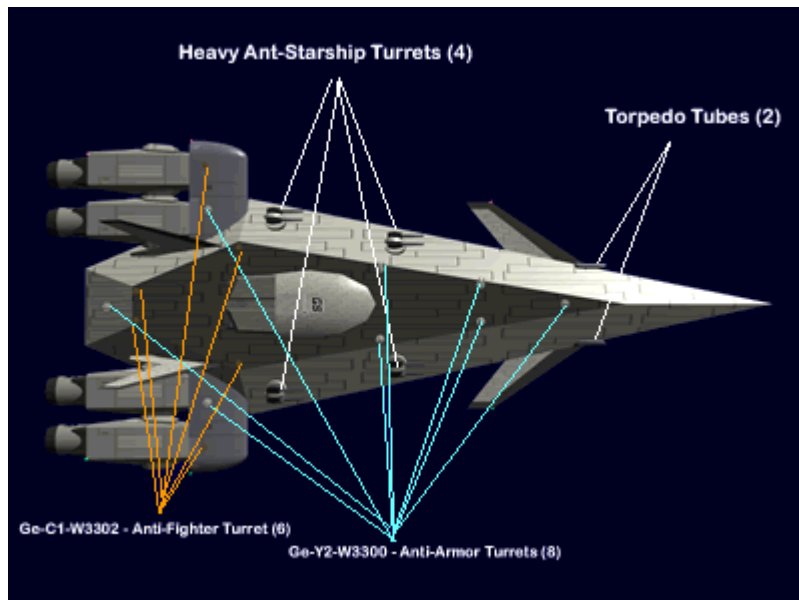
Ge-C1-W3300 - Torpedo Launcher

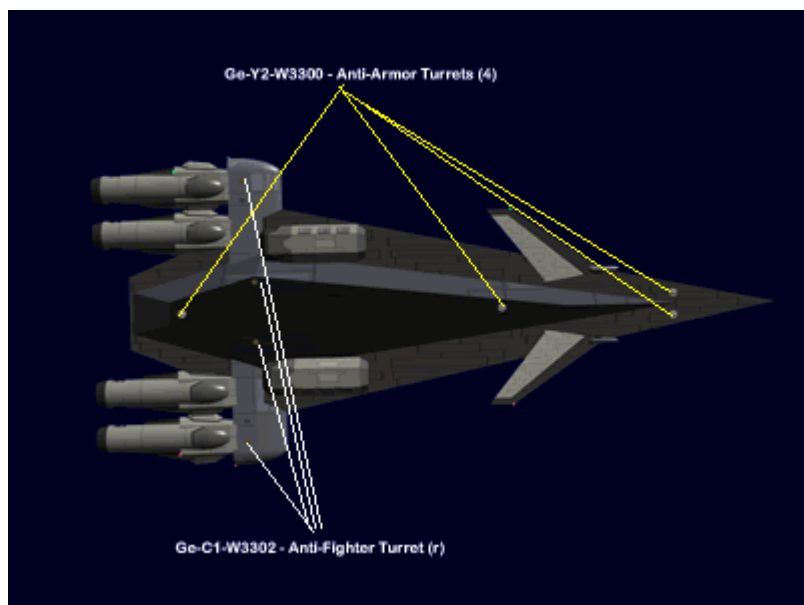
The Ge-C1 is equipped with two [Ge-C1-W3300 - Torpedo Launcher](#); one on either side of the hull on the leading edge of the wings.

Weaponry

The Ge-C1-2a features the following basic weapon load.

- 2 [Ge-C1-W3300 - Torpedo Launchers](#) [Ge-Z1 Series Torpedoes](#)
- 4 [Ge-C1-W3301 - Heavy Anti-Starship Turrets](#) - 3 [SDR](#)
 - 4 Addition slots
- 12 [Ge-Y2-W3300 - Anti-Armor Turretss](#) - 1 [SDR](#)/ 5 [ADR](#) per cannon *Retractable*
- 10 [Ge-C1-W3302 - Anti-Fighter Turrets](#) - 4 [ADR](#) *Retractable*





Additional Information

Vehicles

The Ge-C1 has six shuttle launch bays. Each bay can hold the following:

- 1 [Ge-T1-1A - Transatmospheric Shuttle](#) or [Ge-T1-2a - Hikiuma-Class Shuttle](#)

or 2 [Ge-T2-1C - "Kuma" Shuttle](#) or [Ge-T2-1E "Kuma" Medevac Shuttle](#)

(Shuttles not included.)

Disaster Recovery Version

The redesigned Disaster Recovery version of this ship is the RDRS Ge-C1-3a - Ookami-Class Light Cruiser, pictured below:



This [Rapid Disaster Response Service](#) cruiser accompanies disaster recovery operations, providing protection for refugees and volunteers.

OOC Notes

Authored by [Nashoba](#) Sep 22, 2011 Artwork created by [Nashoba](#) Submission Approved by [Samuel](#) on Sep 24, 2011. [Forum Thread](#).

Products & Items Database	
Product Categories	starships
Product Name	Ookami-Class Light Cruiser
Nomenclature	Ge-C1-2A
Manufacturer	Geshrinari Shipyards
Year Released	YE 33
Price (KS)	1,500,000.00 KS
Star Army Logistics	
Supply Classification	Class A - STARSHIPS

From:
<https://wiki.stararmy.com/> - **STAR ARMY**

Permanent link:
https://wiki.stararmy.com/doku.php?id=corp:geshrinari_shipyards:light_cruiser_2a

Last update: **2024/02/21 18:54**

