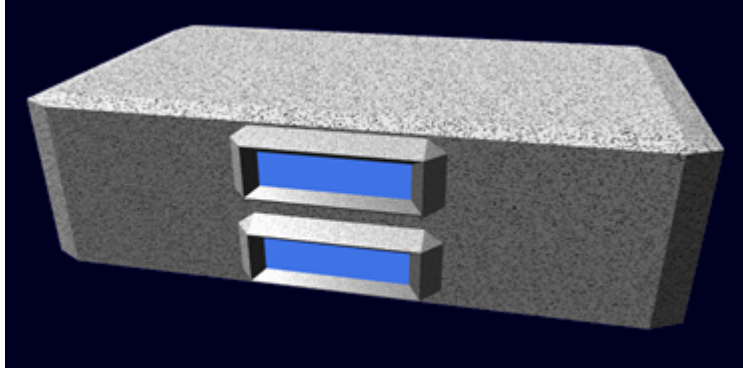


# Ge-Y1-M3101 - Passenger Module

The Ge-Y1-M3101- Passenger Module is an option for the [Ge-Y1-1a - Henkei-class Starship](#) that was first manufactured in [YE 31](#).



## Statistical Data

### General

Class: Module Nomenclature: Ge-Y1-M3101 Type: Passenger Designers: [Geshrinari Shipyards](#)  
Manufacturer: [Geshrinari Shipyards](#) **Price:** 5,500 KS (Without customization)

### Dimensions

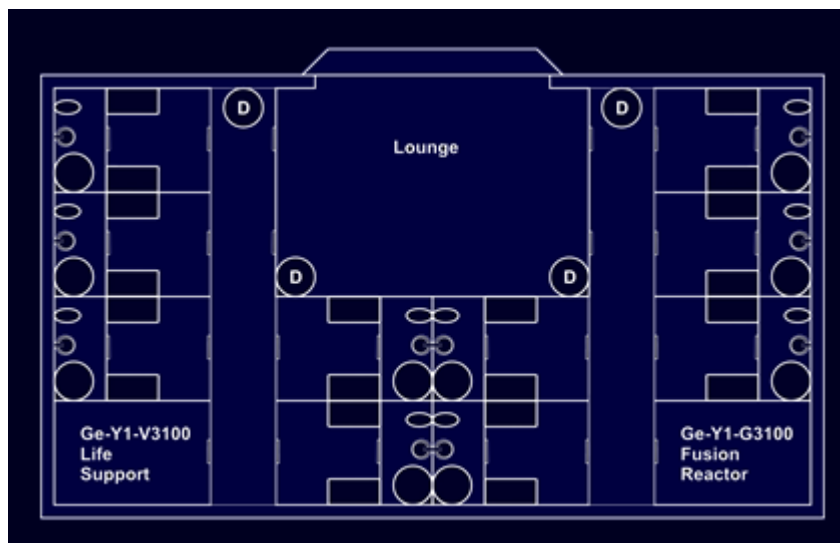
Length: 30 meters (269 feet) Width: 18 meters ( 164 feet) Height: 9 meters (29.52 feet) Decks: 2 (8 meters each)

### Crew and Accommodations

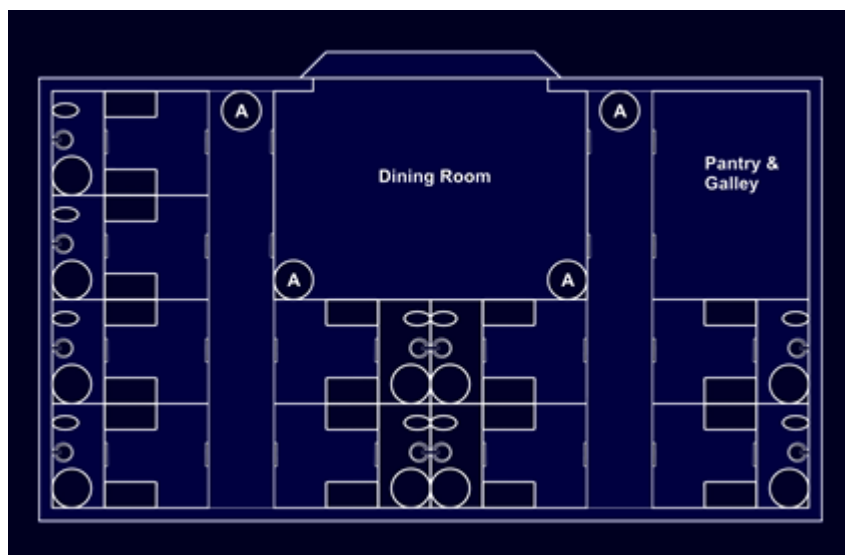
**Passengers:** 40 Maximum Capacity: There are accommodations for 40 personnel **Emergency Capacity:** 80 people can fit aboard in an emergency, but the module would be extremely cramped.

## Deck Plans

### Upper Level



## Lower Level



## Features

### Dining Room

The dining room of the Ge-Y1-M3101 module is located on the lower deck. It is physically under the lounge and spiral staircases connect the two.

### Lounge

The Ge-Y1-M3101 module has a lounge located on the upper deck. It features a spacious bay window, spiral staircases connect it to the dining room, and it has two small bathrooms.

## Pantry & Galley

This space augments the ship's galley by providing a place where meals can be kept warm, on depending on the type of meal actually prepared. It also has storage of beverages, and snacks for the passengers.

## Passageways

Horizontal movement on the [Heneki](#) is by standard passageways similar to these [passageways](#).

Vertical movement is done via spiral staircases.

## Staterooms

Each stateroom is intended for dual occupancy. The dimensions are 4m x 6m including the bathroom. There are two folding beds, that convert into sofas. A pair of small chairs and table complete the accessories.

## Systems

### Emergency Systems

The module is equipped with the [Ge-Y1-E3104 - Automatic Fire Suppression System](#) In addition chemical extinguishers are present for manual use on electrical and metal fires.

### Ge-Y1-A3102 - Armored Hull

The Ge-Y1-M3101 module is constructed using the [GE-T1-H3100 - Spacecraft \(DD\) Hull Construction](#) designed armor hull.

### Ge-Y1-E3104 - Intercom System add-on

The module is equipped with the [Ge-Y1-E3104 - Intercom System add-on](#) which allows the module to tie into the ship.

## Ge-Y1-E3105 - Emergency Beacon

The Ge-Y1-E3105 is a distress beacon that automatically activates if the module is ejected. It broadcasts on subspace and normal radio.

## Ge-Y1-G3100 - Fusion Reactor

The module is equipped with a [Geshrinari Fusion Generator](#) for use incase the module is ejected. It has enough fuel to run the reactor for thirty days.

## Ge-Y1-M3105 - Module Connection Points

The module is equipped with two [Ge-Y1-M3105 - Module Connection Points](#) for connectivity.

## Ge-Y1-V3100 - Life Support System

The module is equipped with the [Ge-Y1-V3100 - Life Support System](#), it expands the life support aboard the main ship and provides full life support in the event the module is jettisoned.

From:  
<https://wiki.stararmy.com/> - **STAR ARMY**

Permanent link:  
[https://wiki.stararmy.com/doku.php?id=corp:geshrinari\\_shipyards:henkei-class\\_starship:ge-y1-m3101](https://wiki.stararmy.com/doku.php?id=corp:geshrinari_shipyards:henkei-class_starship:ge-y1-m3101)

Last update: **2023/12/21 04:21**

