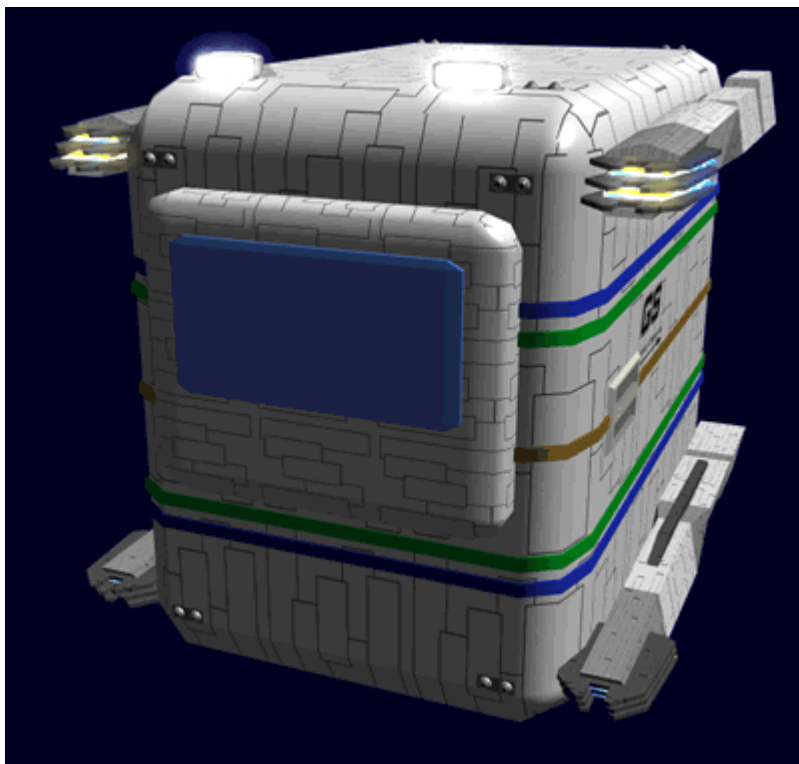


Ge-T3-1a - Raba-Class Work-Pod



The Ge-T1-1a Raba-class Work-Pod is a [Geshrinari Shipyards](#) utility craft for use at the orbital facilities. It became available in [YE 33](#).



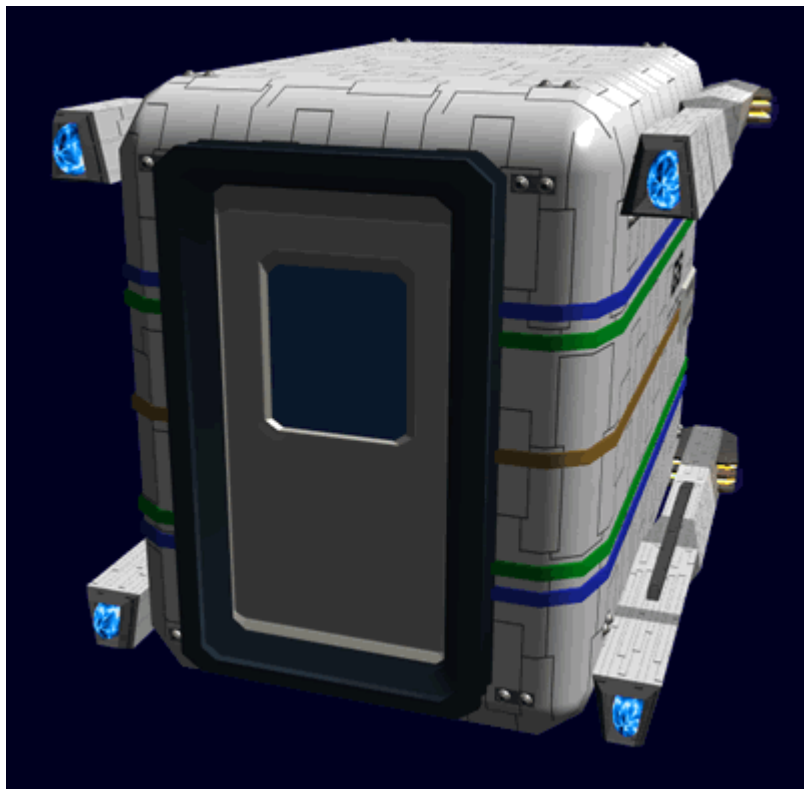
About the Raba-class

The Raba is a utility craft, designed only for operation in space. The can be used to ferry small groups of personnel to a location. By attaching a pair of manipulators, the Raba can be used to move objects or even perform cutting operations keeping the operator safe. Raba means mule in [Yamataian](#)

Appearance

The Raba is a rectangular craft with four micro CDD and heavy Ion thrusters attached to the sides. There is a large reinforced, self-polarizing window for the operator to visually survey the work area. On the rear

of the Raba is a door. This allows the Raba to allow personnel to egress the craft. It is fitted with a docking collar which allows the Raba to connect to any standard airlock. On either side of the Raba the armature mounting points can be seen.



Statistical Data

General

- Organization: [Geshrinari Shipyards](#)
- Type: Raba-Class
- Class: Utility Craft
- Nomenclature: Ge-T3-1a
- Designer: [Geshrinari Shipyards](#)
- Manufacturer: [Geshrinari Shipyards](#)
- **Price:** 8,000 [KS](#)

Crew and Accommodations

Crew: 1 **Passengers:** 6

Dimensions

Length: 2.5 meters (8.2 feet) Width: 2 meters (7.6 feet) Height: 2 meters (7.6 feet)

Propulsion and Range

Speeds

- **Sublight Engines:** .01 c 1,331 km/sec 832 miles/sec
- **Ion Thrust:** limited to 4G acceleration

Durability and Maintenance

Operating Time: The Raba carries enough fuel for the [Geshrinari Fusion Generator](#) to operate for 120 hours of continuous power at normal levels.

Service Lifespan: Estimated 20 years of constant use, possibly longer with refits.

Refit Cycle: Frequent minor updates through the [Geshrinari Shipyards](#) system and a refit once every four to five years.

Damage Capacity

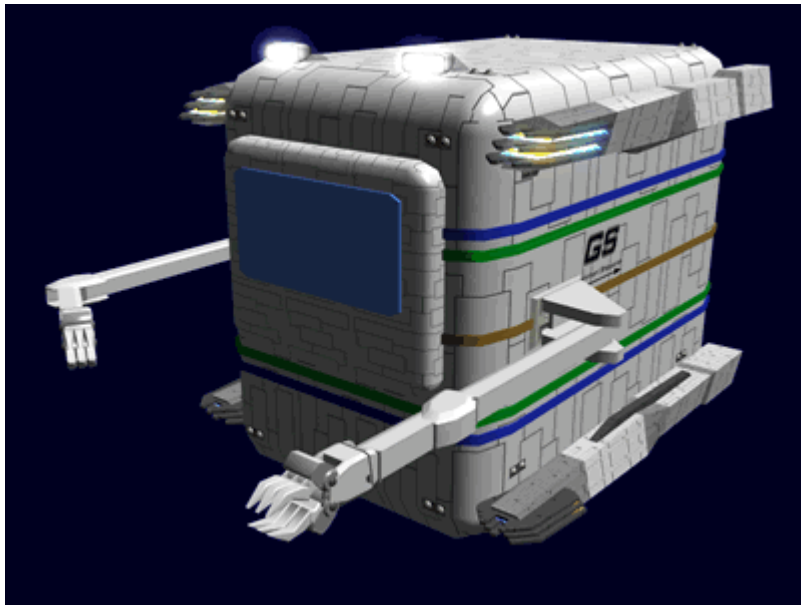
See [Damage Rating \(Version 3\)](#) for an explanation of the damage system.

Hull: 16 ADR

Inside the Raba

The Raba interior is a single compartment. There is an atmospheric containment force-field that allows the operator to keep an atmosphere when personnel are exiting. The Raba is typically operated in a low gravity mode, and the operator is kept in place by a restraint harness.

Systems



Hull

The Raba is built with a [GE-T3-H3301 - Spacecraft \(OD\) Hull Construction](#) hull.

Life Support

The Raba is equipped with a [Ge-T8-V3100 - Environmental System](#).

Sensors

The Raba is equipped with a [Ge-T8-E3100 - Basic Small Craft Sensor Package](#).

Computer

The Raba is equipped with a [Ge-T8-E3103 - Computer Array](#).

Communications

The Raba is equipped with the [Ge-T8-E3104 - Communications Array](#), the subspace feature is disabled.

Propulsion

The Raba is equipped with the following propulsion systems.

Maneuvering Thrusters

The Raba has twenty-four [Geshrinari Maneuvering Thrusters](#).

CDD/Ion drives

The Raba has four [Ge-T3-P3300 - CDD/Ion drive modules](#). The Raba carries enough fuel for the Ion drive for ninety minutes of thrust.

Power

The Raba is equipped with a [Geshrinari Fusion Generator](#) to power the craft.

Equipment

- [EM-G17-1a Basic Tool Kit](#)

OOC Notes

- Artwork by [Nashoba](#).

Products & Items Database	
Product Categories	small craft
Product Name	Reba-Class Workpod
Nomenclature	Ge-T3-1A
Manufacturer	Geshrinari Shipyards
Year Released	YE 33
Price (KS)	8,000.00 KS

From:

<https://wiki.stararmy.com/> - **STAR ARMY**

Permanent link:

https://wiki.stararmy.com/doku.php?id=corp:geshrinari_shipyards:ge_t3_raba

Last update: **2024/02/19 18:55**

