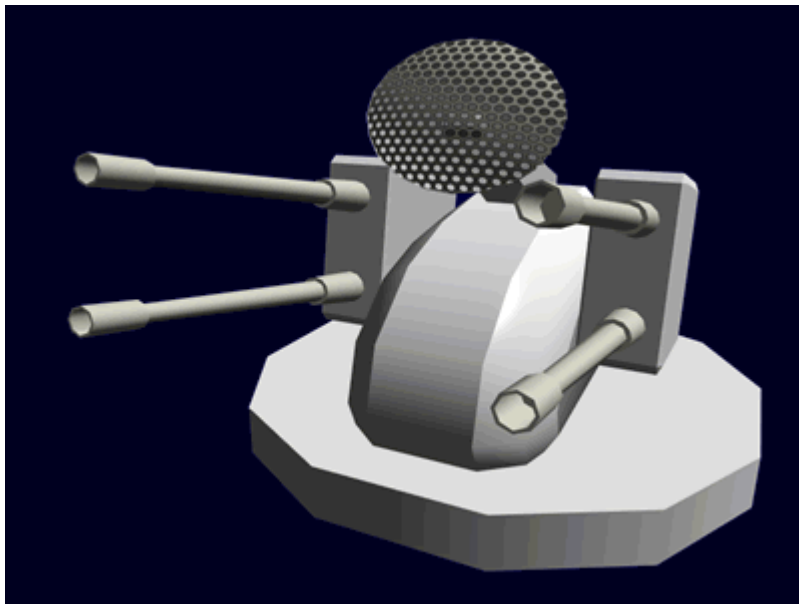


# Ge-Y2-W3300 - Anti-Armor Turrets



The Ge-Y2-W3300 is the [Geshrinari Shipyards](#) latest ship defense system. Built for the [Ge-Y2-1a - Hanto-Class Starship](#), it became available in [YE 33](#).

Its purpose is to shoot down attacking fighters, incoming missiles. It features four cannons and a built-in tracking system that allows it to track and lock onto targets. It can be operated remotely by the crew using the ship's sensors or or autonomously using its own.



## Details


Class: Anti missile/armor Nomenclature: Ge-Y2-W3300 Type: Weapon Designers: [Geshrinari Shipyards](#)  
Manufacturer: [Geshrinari Shipyards](#) Price: 1,750 KS

## Specifications

Max Range (space): 1 light second, 300,000 kilometers {186,282 miles} Max Range (atmosphere): 300 kilometers {180 miles}

Rate of fire: Once every 10 seconds

## Damage

- [Damage Rating \(Version 3\)](#): Tier 9, Heavy Anti-Mecha/Tier 8 or Tier 9, Medium Anti-Mecha or Heavy Anti-Mecha (  **Fix Me!** ): Staff needs to determine which)
- [Damage Rating \(Version 3\)](#): Heavy anti-mecha (9)

From:  
<https://wiki.stararmy.com/> - **STAR ARMY**

Permanent link:  
[https://wiki.stararmy.com/doku.php?id=corp:geshrinari\\_shipyards:component:ge-y2-w3300](https://wiki.stararmy.com/doku.php?id=corp:geshrinari_shipyards:component:ge-y2-w3300)

Last update: **2023/12/21 04:21**

