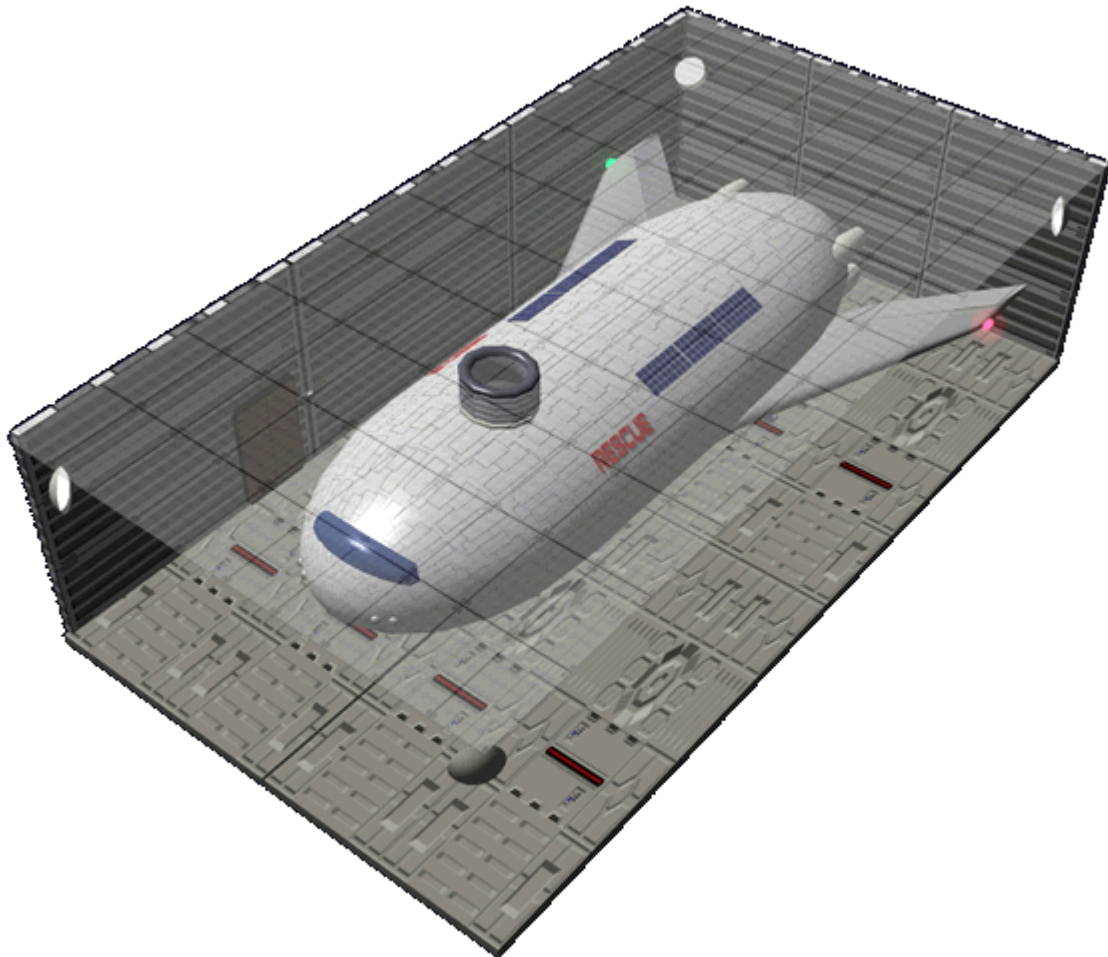
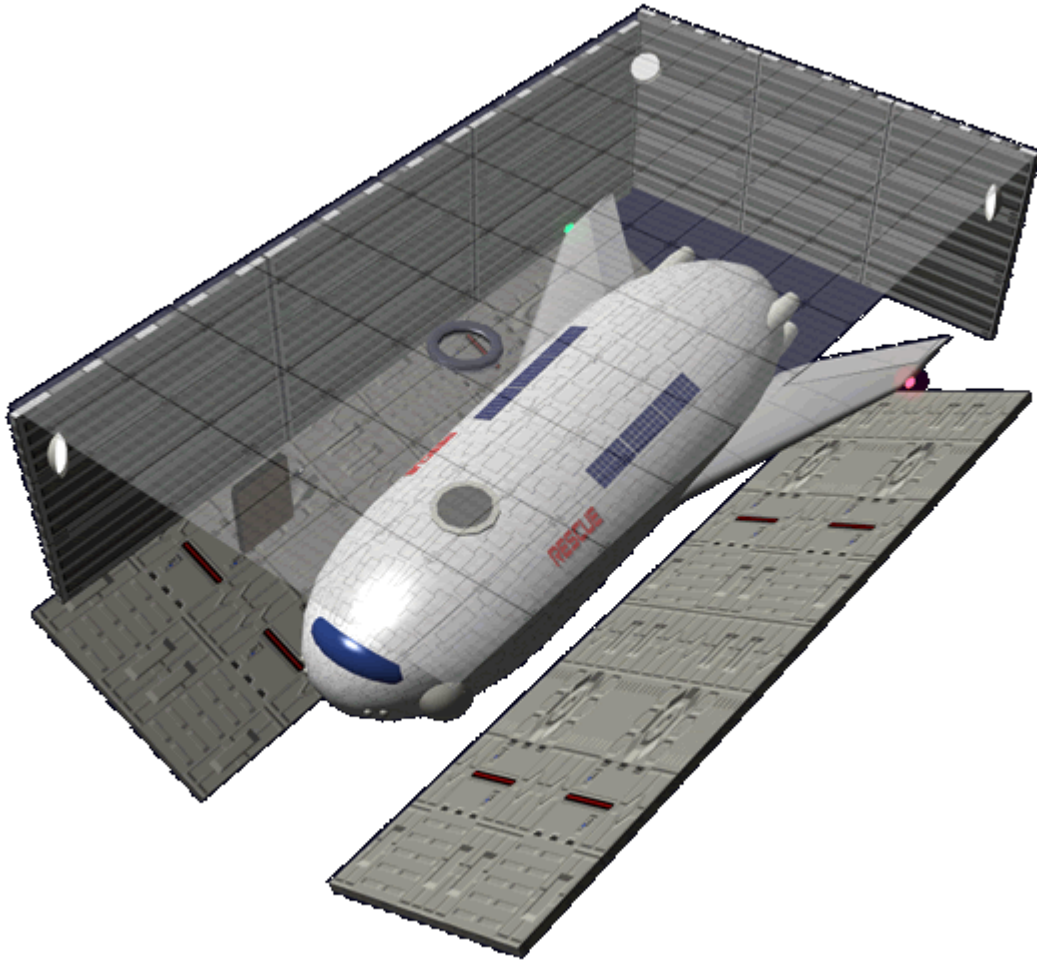


# Geshrinari Lifeboat Bay

The [Geshrinari Shipyards](#) lifeboat bay is designed to accommodate one or more of the [Ge-T6-1a - Sukuu-Class Lifeboat](#).



The standard bay has doors that form the floor of the bay. The doors have mechanisms to open them to allow the [Sukuu](#) to be installed and removed for servicing. In the case of an emergency for deployment the doors are equipped with explosive bolts and charges that release the doors and push them away from the bay. This was implemented to ensure that the craft would not be trapped in the bay.



A secured maintenance door is present on one of the interior walls to allow technicians to enter the bay and service the craft. There are four interior lamps used for maintenance and during launch.

Above the bay is a floor mounted hatch. Beneath the hatch is a docking ring that connects to the dorsal hatch on the [Sukuu](#). When the hatch is opened a tension controlled ladder lowers down into the craft. This is what the passengers for the lifeboat use to enter.

From:  
<https://wiki.stararmy.com/> - **STAR ARMY**

Permanent link:  
[https://wiki.stararmy.com/doku.php?id=corp:geshrinari\\_shipyards:compartments:lifeboat\\_bay](https://wiki.stararmy.com/doku.php?id=corp:geshrinari_shipyards:compartments:lifeboat_bay)

Last update: **2023/12/21 04:20**

