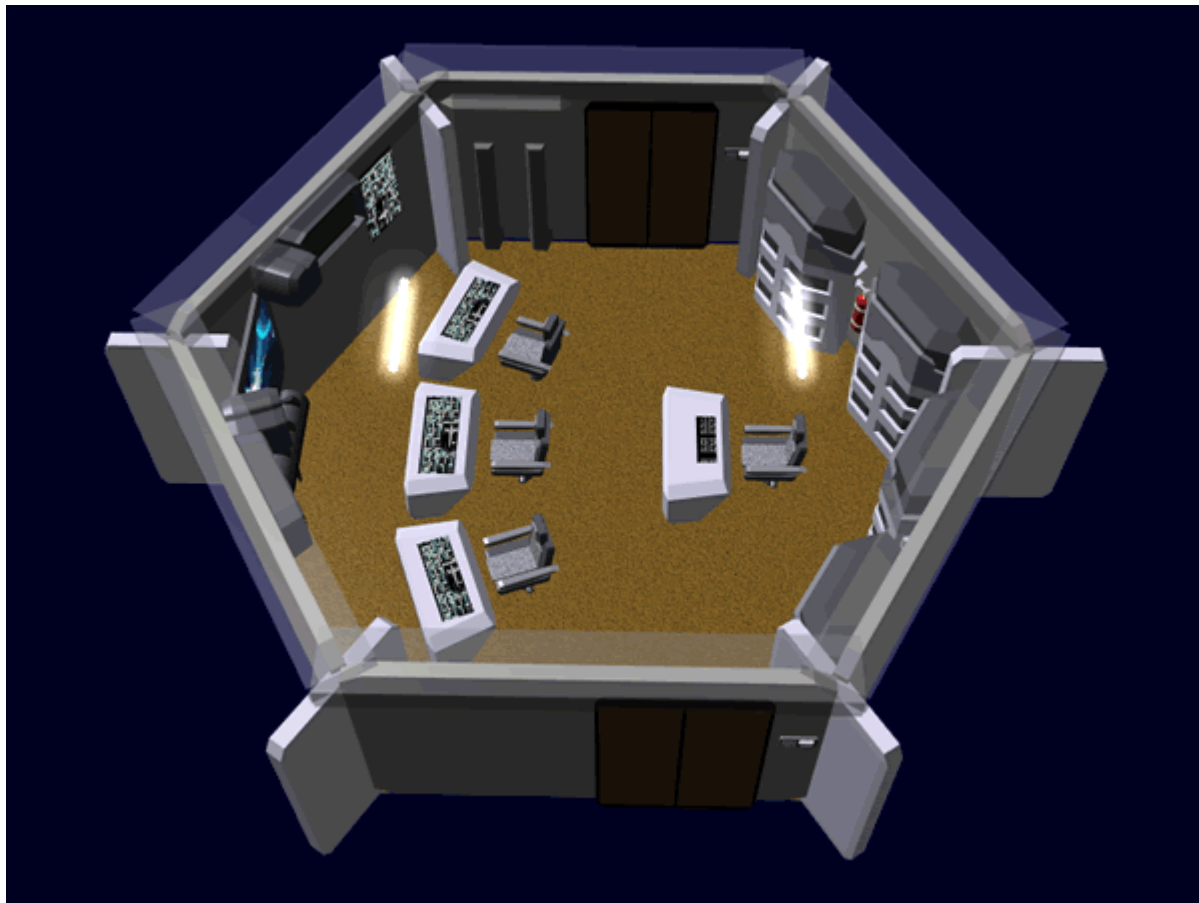


Geshrinari Standard Bridge

This is the standard bridge developed by [Geshrinari Shipyards](#) and in use since [YE 31](#).




The standard bridge has two doors located on the side walls. Located at the front is a the main screen. On each of the side walls are displays for use by the crew members.

The standard bridge has four stations. Each station has [Geshrinari Standard Console](#) The stations are the following:

Location	Function
Center forward	Helm
Center rear	Command
Right forward	Navigation/sensors
Left forward	Operations

- Helm - this is where the pilot controls the ship.
- Command - this is where the commander of the ship can monitor and in emergency take control of the ship.
- Navigation/Sensors - this station controls the ships sensors, tracks objects, and plots courses for the pilot to follow.
- Operations - This station varies depending on the ship it is installed in.

Along the rear wall of the bridge are lockers for storing emergency equipment, and spare parts. One of these is similar to a standard [damage control locker](#). A pair of [Fire Extinguisher](#) s are mounted on the rear wall.

Access to the bridge is controlled by biometrics. The person entering must place their hand on a scanner and provide a voice print. The hand scanner also reads the thermal levels of the hand to ensure the person is alive and conscious.

From:
<https://wiki.stararmy.com/> - **STAR ARMY**

Permanent link:
https://wiki.stararmy.com/doku.php?id=corp:geshrinari_shipyards:compartments:basic_starship_bridge

Last update: **2023/12/21 04:20**

