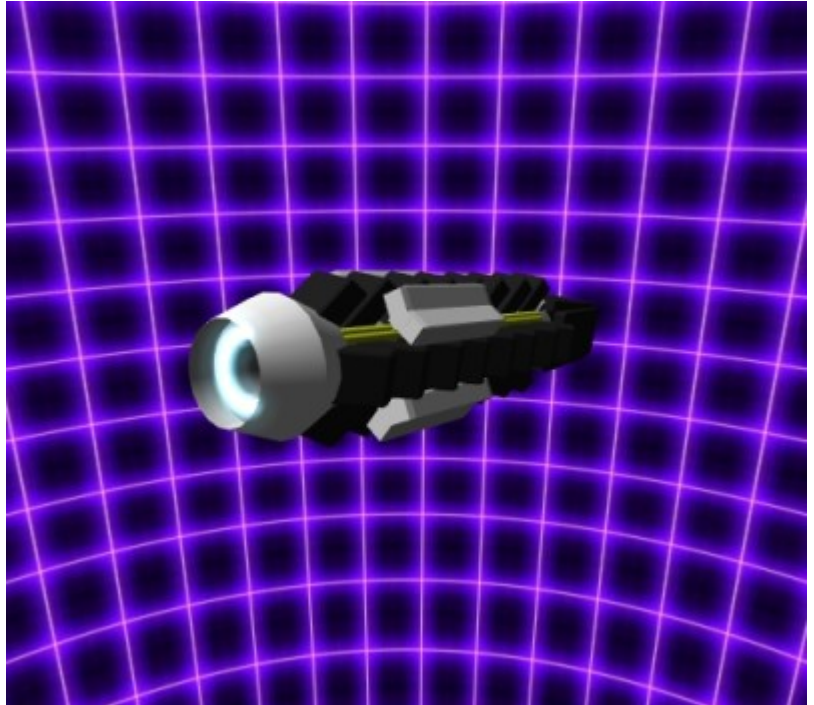


FMS Gravity Engine

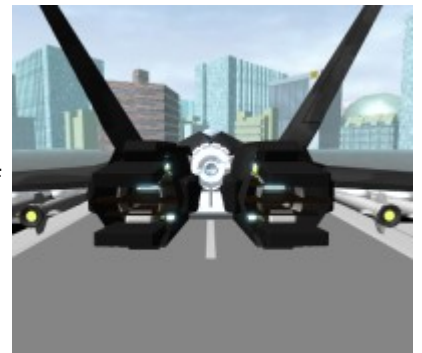
Introduced in [YE 41](#) by the [Frontier Manufacturing Service](#), the Gravity Engine is a powerplant and propulsion device all in one. It generates thrust by creating dense gravitons and propelling them through coils out behind it. Its operation will move any gasses close enough to the front of the engine to be pulled in by the intense gravitational pull very quickly through the engine's coils and through the nozzle with the effect of increased volume leaving the engine to generate more thrust and doubling its small scale application in ventilation. Gravitational manipulation gives it the ability to offer a craft motion in any direction. This very useful engine has seen widespread use in products used and sold by the [Frontier Service Corporation](#).



Designer:	Frontier Manufacturing Service
Nomenclature:	Fs-P1-2
Manufacturer:	Frontier Manufacturing Service
Fielded by:	Open Market

History

Originally created by the [OSO](#) and manufactured by the FMS, the new and improved gravity engine is now more flexible and robust than ever. All of this innovation even came with a colossal price reduction for manufacturing. Originally seen on fighters such as the YV1 [Wahoo Interceptor](#) and [U-1 Production Model Variable Mecha](#) the gravity engine of old proved to be easily built and serviced as well as versatile enough to fit a variety of applications.



Function and Design

Each gravity engine uses four small hyperspace taps to provide electricity for the operation of both the engine and other functions in the craft it is installed on. The use of four smaller than average taps offers

redundancy but no noticeable increase in performance over other engines its size. Electricity operates an array of [FSCorp Graviton Projection Equipment](#) which generate a small but intense gravitational field. Dense gravitons are injected into this field which accelerates it out of the rear of the engine. These Gravitons can also catch gasses which increase the thrust output. Spacefaring vessels will generally be equipped with tanks of highly compressed, heavy noble gasses for increased performance in space. (Specs for FSC vehicle are recorded while using argon as a fuel source)

Additionally, the creation of the small gravitational field creates a secondary field which can be controlled by any shield generator to protect against gravitational attacks. The function of this device runs cool compared to other propulsion devices though its exhaust is still dangerously hot as well as forceful. All of this means that emissions are very low making this engine environmentally safe, depending on fuel type as different gasses will have different effects. When using only the planets atmosphere the gravity engine is environmentally neutral.

Availability

The FMS Gravity Engine is available commercially to any interested parties.

- Recommended Retail Prices
 - Tier 1-3 Gravity Engine: 200 KS
 - Tier 4-6 Gravity Engine: 500 KS
 - Tier 7-9 Gravity Engine: 2,000Ks
 - Tier 10-12 Gravity Engine: 10,000 KS
 - Tier 13-15 Gravity Engine: 100,000 KS

OOO Notes

[Rizzo](#) created this article on 2019/08/17 13:39.

Approved by [Syaoran](#) on 8/25/2019

From:
<https://wiki.stararmy.com/> - **STAR ARMY**

Permanent link:
https://wiki.stararmy.com/doku.php?id=corp:fscorp:products:gravity_engine

Last update: **2023/12/21 04:20**

