

EM-J4-G3500 Power System

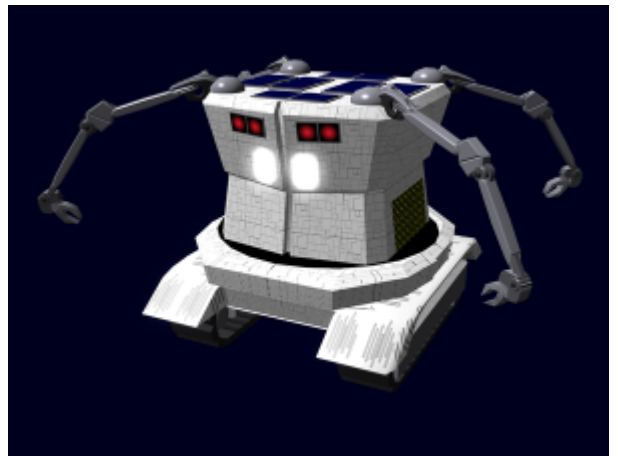
Emrys Industries

A Tamahagane Company

The EM-J4-G3500 Power System was developed for the [EM-J4 MARI Series Drone](#), it became available in [YE 35](#).

About the G3500

The G3500 consists of several components.



Details

Manufacturer: [Emrys Industries](#) Nomenclature: EM-J4-G3500 Type: Capacitor, Rechargeable Class: Generator Designer: [Tamahagane Corporation R&D](#)

Capacitor System

The primary component is the capacitor system. This is capable of operating the drone for seventy-two hours of high power consumption.

Induction Charging

The G3500 has a twin induction charging system. This system harnesses ambient [electromagnetic](#) energy fields.

Charging efficiency depends on factors such as drone activity levels, strength and availability of EM fields.

Photovoltaic Charging

The G3500 has twelve high efficiency ☀️ **photovoltaic** panels on the upper exterior. These allow the Capacitor to be charged by available light. This increases the operating time of the drone.

Charging effectiveness depends on factors such as drone activity levels, the amount and intensity of light.

Quick Charge

The G3500 can be rapidly recharged by being connected to a standard power outlet, or the drone's docking station. Quick Charge is capable of fully charging the capacitor system in one hour.

From:

<https://wiki.stararmy.com/> - **STAR ARMY**

Permanent link:

https://wiki.stararmy.com/doku.php?id=corp:emrys:em_j4_g3500

Last update: **2023/12/21 00:57**

