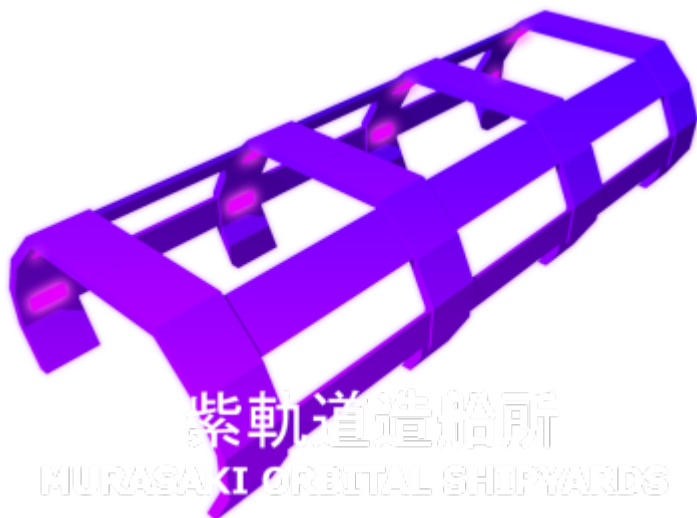


MS-L1-1A - Jiyū-Class Light Freighter



This article is under construction or awaiting review. It is presently not approved for use in SARP.



A MURASAKI KEIRETSU SUBSIDIARY

The *Jiyū-Class light freighter* was developed by [Murasaki Orbital Shipyards](#). It is a commerical cargo freighter that first entered mass production and became available for purchase in [YE 34](#).

About the Jiyū-Class



The *MS-L1-1A - Jiyū-Class Light Freighter* is a robust, versatile and easily customizable starship with a modular system design for greater ease in modification and equipment upgrading. It is primarily intended for freight hauling and passenger transport. The starship is [Murasaki Orbital Shipyards](#) first large-scale commercial venture and the design was intended primarily as a replacement for the fleet of aging light freighters currently in the service of the [Trinary Star Shipping](#) company. The *Jiyū* is twice as large most light freighters – though still less than half the size of your average medium freighter. Its larger size grants the *Jiyū* superior cargo capacity when compared to most ships of its type that currently available in the interstellar market.

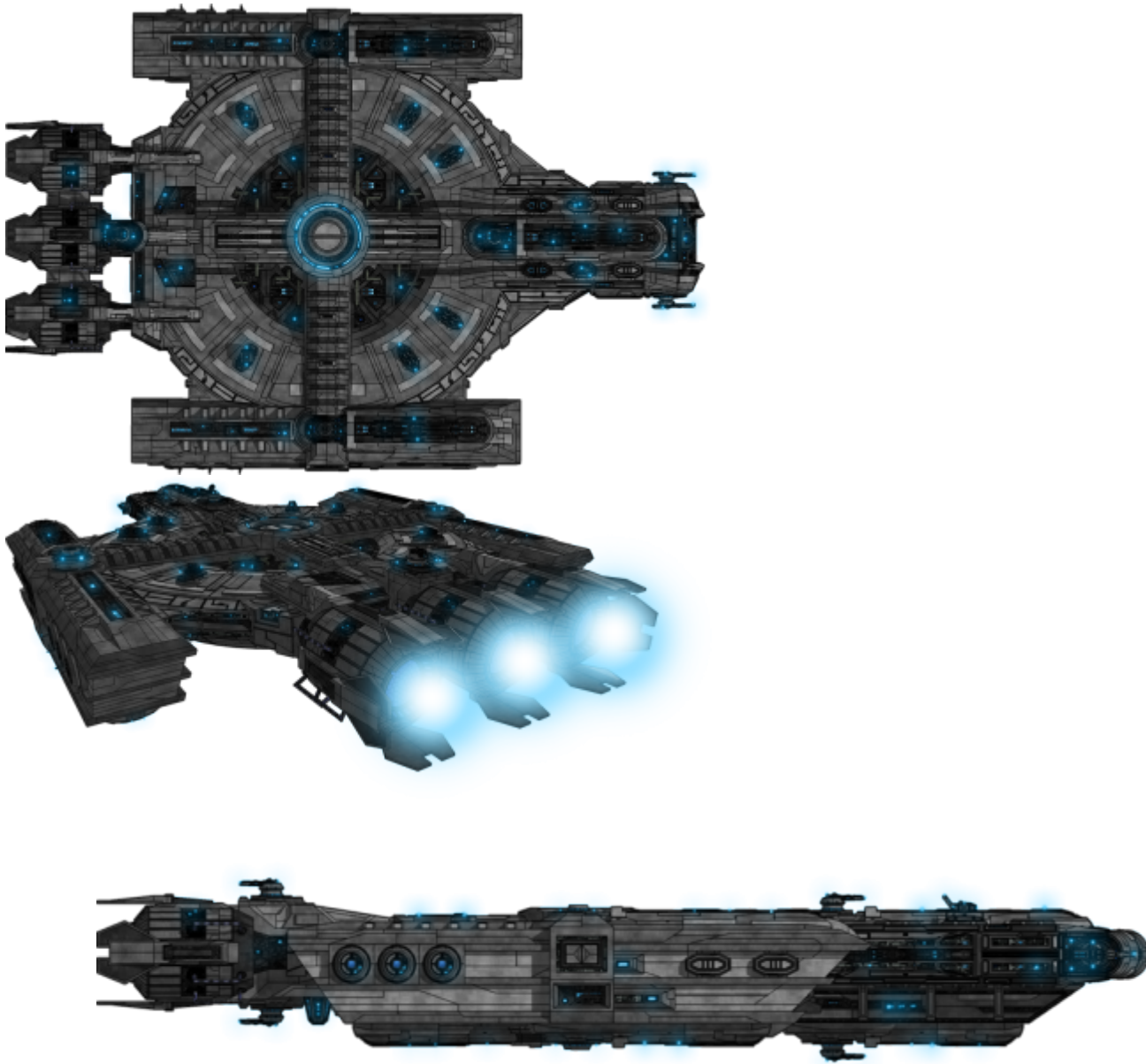
The class designation '*Jiyū*' means '*Freedom*' in the [Yamataian](#) language.

History

The reasons for the creation of the MS-L1-1A design were two-fold – first, to create replacement light freighters for the [Murasaki Keiretsu's](#) aging merchanter fleet, the [Trinary Star Shipping](#) company and break the companies reliance on other organizations for the creation and development of its ships. Second, was to create a marketable product for [Murasaki Orbital Shipyards](#) to sell to the interstellar community.

Because this design was the companies first foray in ship construction, the Research and Development team of [Murasaki Orbital Shipyards](#) spent several additional months labouring and revising the *Jiyū* design before finally allowing production to begin – in order to absolutely ensure sales and give the company a lasting good impression in the minds of its customers.

Appearance



The main body of the *Jiyū-Class* has a saucer-like shape. Extending out to the front is the ships bridge and main access ramp for the cargo deck. Towards the aft quarter of the ship are the three large MPD sub-light drives that serve as the ships primary form of propulsion. Beneath the sub-light drives are a pair of hyperdrive fold spines that allow the freighter to achieve faster-than-light insterstellar travel. To both the port and starboard quarters of the ship are a pair of box-like extensions to the main hull which feature airlocks, spare turret mounts, equipment mounts and escape pods.

Statistics and Performance

General Information

Class: *Jiyū*-class Light Freighter **Nomenclature**: MS-L1-1A Type: Light Freighter Designer: [Murasaki Orbital Shipyards](#) Research & Development Manufacturer: [Murasaki Orbital Shipyards](#) Production: Mass Production Fielded by: [Trinary Star Shipping](#), various government organizations, commercial entities and civilians

Manufacturers Suggested Retail Price: 60,000 [KS](#) or [equivalent currency](#) Availability: Unrestricted

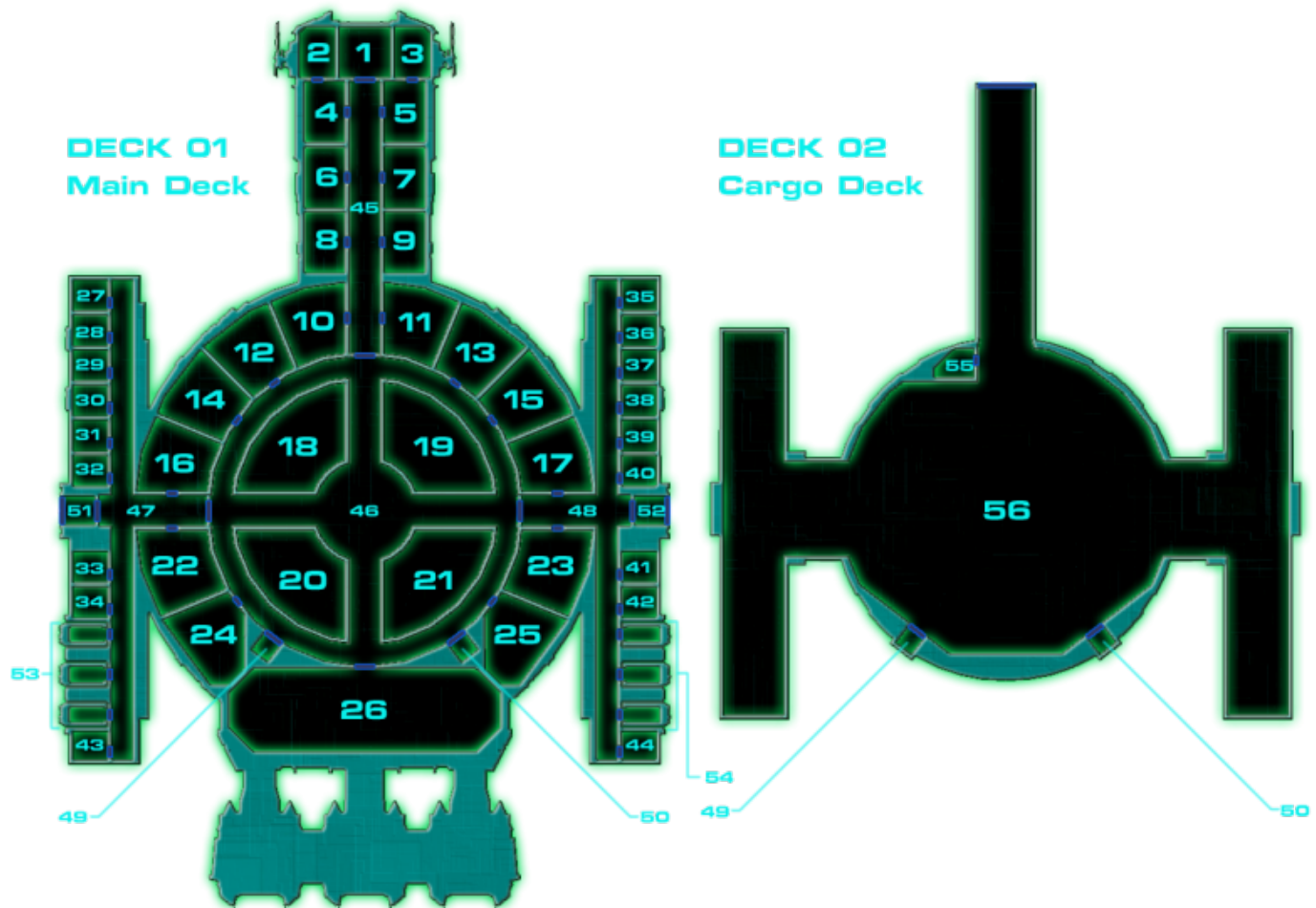
Crew Accommodations

Crew Compliment: ?

Dimensions

Length: ? meters (? feet) Width: ? meters (? feet) Height: ? meters (? feet) Inertial Mass: ? metric tonnes

Inside the Jiyū-Class



Deck 01 - Main Deck

- 01. MS-L1-C3409 - Compact Starship Bridge
- 02. MS-L1-C3411 - Officer Quarters (Captain's Stateroom)
- 03. MS-L1-C3417 - Computer Mainframe Compartment
- 04. MS-L1-C3430 - Office Room (Captain's Office)
- 05. MS-L1-C3431 - Storage Compartment (Ship's Locker)
- 06. MS-L1-C3424 - Communications System Compartment
- 07. MS-L1-C3423 - Sensor System Compartment
- 08. MS-L1-C3413 - Refresher Compartment
- 09. MS-L1-C3412 - Laundry
- 10-11. MS-L1-C3431 - Storage Compartments
- 12. MS-L1-C3420 - Inertial Compensator Compartment
- 13. MS-L1-C3421 - Mass Compensator Compartment
- 14. MS-L1-C3422 - Shield Generator Compartment
- 15. MS-L1-C3432 - Contra-Gravity Repulsor Compartment
- 16. MS-L1-C3414 - Lounge (Crew Lounge)
- 17. MS-L1-C3414 - Lounge (Passenger Lounge)
- 18-21. MS-L1-C3429 - Fuel Tank (Fuel Tanks 1-4)
- 22. MS-L1-C3426 - Compact Medical Bay
- 23. MS-L1-C3415 - Recreation Area
- 24. MS-L1-C3425 - Lif Support Compartment

- 25. MS-L1-C3418 - Galley Compartment
- 26. MS-L1-C3416 - Main Engineering Compartment
- 27-34. MS-L1-C3410 - Crew Quarters (Portside Crew Staterooms 1-8)
- 35-42. MS-L1-C3419 - Passenger Quarters (Starboard Passenger Staterooms 1-8)
- 43-44. MS-L1-C3413 - Refresher Compartments
- 45-48. MS-L1-C3403 - Standard Corridors
- 49. Portside Elevator
- 50. Starboard Elevator
- 51-52. MS-L1-C3405 - Airlocks
- 53-54. MS-L1-X3400 - Escape Pods

Deck 02 - Cargo Deck

- 55. MS-L1-C3428 - Cargo Office
- 56. MS-L1-C3427 - Cargo Hold

Cargo Capacity

How many [containers](#) does it hold?

Currently according to the modelling programs measurements, the ship is 92.8 meters in length, 62.76 meters in width and 15.96 meters in height – assuming I don't rescale the ship later by a little bit. It has two decks, with the entirety of the bottom deck being given over to storage space, and most other facilities being in the top deck. The total volume of the lower deck is around 6,200 cubic meters.

The only entrance to that deck from the outside of the ship is beneath the bridge. The entrance is 5.5 in width by 3.1 meters in height, though – barely allowing clearance for SSCC-XL sized containers. Due to the shape of the lower deck it can realistically only fit 10-11 inside with some creative loading – though there's enough physical space for the equivalent volume of at least 55 SSCC-XL sized containers.

You can't see it in the images I've currently uploaded at the moment, but there are also a number of cargo cradles built onto the base of the freighter – these are intended to allow the freighter to magnetically clamp onto large containers like the SSCC-XL, SSCC-Huge or a [Detachable Outer Container](#) or something similar. Technically, they could also be used to attach the freighter to another starship and tow it. Smaller external containers would have to be built to withstand space travel and atmo re-entry though, unlike the flimsy collapsable containers that are normally used for cargo transport.

From:
<https://wiki.stararmy.com/> - **STAR ARMY**

Permanent link:
https://wiki.stararmy.com/doku.php?id=wip_2023_or_older:corp:murasaki_keiretsu:murasaki_orbital_shipyards:ms-l1-1a_jiyu_light_freighter

Last update: 2023/12/27 08:11

