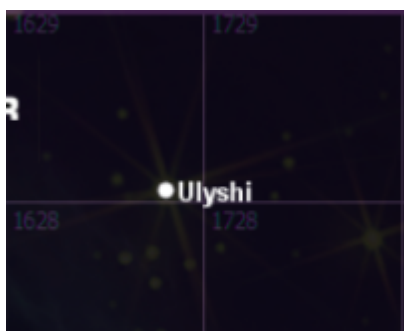


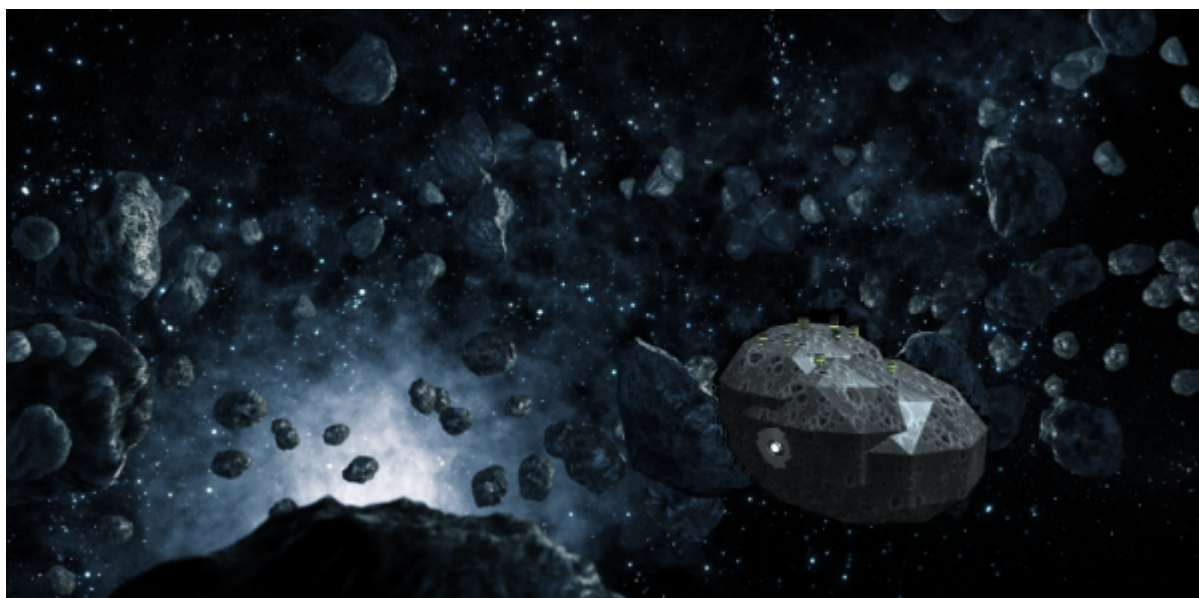
# Ulyshi Star System

The Ulyshi star system is known by several Iromakuanhe pirates, including [Aashi Nath Werner](#) but was for a long time uninhabited because of the dense asteroid belt that surrounded it, making it hard to both maneuver in and out of the system without crashing and to see the system beyond the belt.

*This is a system article. To find information for the plot, go to [Ulyshi!](#)*



The [Ragnarok](#) team has built a base named [anurakti\\_station](#) on an asteroid in the belt surrounding the system and Aashi and [Ulysses S. Werner](#) have made their home Luftschloss, the forest planet second from the white dwarf sun.



The planet of Luftschloss has dense forests with interspersed lakes and meadows. The air is breathable and the gravity is 1 g, making it incredible hospitable. The trees are mostly birch, redwoods, spruce, and giant sequoia. There are many different metals and rocks such as gold, diamond, platinum, iron, nickel, silicon, copper, shale, sandstone, silver, mercury, and rhodium.

The system is located in the southeastern corner of the 1629 star grid of the [Kikyo Sector](#).

## Star Data

The Star of the Ulyshi system is a lone star, yellow, and is a dwarf star. Below are statistics for the star.

- Name: Ulyshi
- Type: White Dwarf
- Mass:  $2 \times 10^{50}$  kg
- Semi-Major axis: 80 million miles
- Orbital period: 1 IL (250 Days)
- Rotation: 26 Hours

## Planetary Data

There are four planets in the Ulyshi system. Below is their statistical information.

Planetary Overview					
Order	Name	Type	Distance	Mass	Radius
1	Sehnsucht	Lava	50 million miles	$4 \times 10$ to the power of 30 kg	2000 miles
2	Luftschloss	Forest/ Water	100 million miles	$6 \times 10$ to the power of 24 kg	5000 miles
3	Seeräuber	Water	150 million miles	$5 \times 10$ to the power of 24 kg	7000 miles
4	Zeitgeist	Ice	200 million miles	$2 \times 10$ to the power of 16 kg	20000 miles

### Sehnsucht

- Type: Lava
- Orbital Radius: 100 million kilometers
- Period: .9 IL
- Gravity: .5 g
- Planetary Population: None
- Natural Satellites: None
- Facilities: None

### Luftschloss

- Type: Forest
- Orbital Radius: 108 million kilometers
- Period: .7 IL
- Gravity: 1 g
- Planetary Population: 2
- Natural Satellites: 2 moons
- Facilities: None

## Seeräuber

- Type: Water
- Orbital Radius: 228 million miles
- Period: 2 IL
- Gravity: 2 g
- Planetary Population: None
- Natural Satellites: 1 moon
- Facilities: None

## Zeitgeist

- Type: Ice
- Orbital Radius: 1200 million miles
- Period: 4 IL
- Gravity: 3 g
- Planetary Population: None
- Natural Satellites: None
- Facilities: None

## Celestial Data

A belt with metal-rich asteroids circles the planets and star. It contains many asteroids and is thick, making it a great place for hiding and not being found.

## OOC Notes

[Gunhand4171](#) created this article on 2017/03/18 23:24.

<b>Places of the SARPiverse</b>
---------------------------------

<b>Place Categories</b>	star system
-------------------------	-------------

From:

<https://wiki.starmy.com/> - **STAR ARMY**

Permanent link:

<https://wiki.starmy.com/doku.php?id=system:ulyshi&rev=1701276743>

Last update: **2023/12/20 17:07**

