

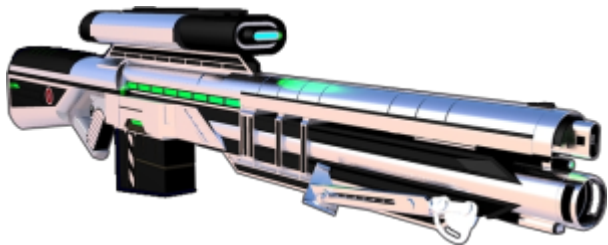
# Ke-W5-1A Light Armor Tactical Rifle

THE LATR is a dual mode sniper system primarily for usage against heavily armored PA targets and secondarily for usage as a close quarters SMG. It is the first model in the LATR series, developed by [Ketsurui Fleet Yards](#). Development of the weapon was focused on maintaining high damage effect on heavily armored PA. The weapon is slated to enter mass production for the [Star Army of Yamatai](#) in YE 40 after the completion of a trial run.

## Nomenclature Information

- Designer: [Ketsurui Fleet Yards](#)
- Manufacturer: [Ketsurui Zaibatsu](#)
- Name: Ke-W5-1A
- Type: Dual Mode Rail Sniper Rifle/SMG
- Role: Dual Mode Sniper System
- Length: 47 Inches <sup>1)</sup>
- Mass: 80 Lbs. <sup>2)</sup> Empty, 90 Lbs. <sup>3)</sup> Loaded

## Appearance



The Light Armor Tactical Rifle has a titanium alloy and a polymer utility section with a chrome-like finish. The alloy has a chrome, green, and, white color, while the polymer is completely black. On the top of the weapon, a scope mounting rail allows for the application of different types of scopes. The box magazine is located just in front of the grip. The weapon also has a standard-issue bipod, which is located at the front of the barrel. The weapon has two sets of barrels and muzzles. The top one is utilized for the secondary SMG mode, and the bottom one is utilized for the primary sniper mode.

## Discharge Information

- Muzzle Flash: In both modes, the muzzle flash manifests as a small flash of bluish light. However, most effects are hidden by an inbuilt flash hider that is installed in both barrels.
- Projectile/Beam Appearance: In both modes, the projectile/energy bolt has a bluish color and a low amount of visibility and brightness.
- Effective Range 20 Miles <sup>4)</sup>
- Rate of Fire: 200 RPM in sniper Mode, 1000 PPM in SMG Mode

- Recoil: In sniper mode, the LATR has a heavy vertical recoil. In the SMG mode, the LATR has an easy to control recoil pattern. The LATR is not permissible for usage outside of power armor.

## Ammunition

- Ammunition [20×100 LATR Rounds](#)
- Average [DR](#): Heavy Anti-Armor/Light Anti-Mecha/Heavy Anti-Personnel (Ammunition and Mode Dependent). In sniper mode, one round is capable of “Through-and-through penetration” for heavy power armors.
- Round Capacity: 10 Round Standard Magazine (15 Round Large Magazine), 30 Shots per Magazine in SMG Mode

| Ke-W5-1A 20×100 LATR Round Damage Quickchart                |                               |
|---|-------------------------------|
| Type/Mode   | Damage                        |
| Standard Ball Type/Sniper Mode                              | Heavy Anti-Armor (Tier 6)     |
| Armour-Piercing Fin-Stabilized Discarding Sabot/Sniper Mode | Light Anti-Mecha (Tier 7)     |
| High-Explosive Aether Incendiary/Sniper Mode                | Light Anti-Mecha (Tier 7)     |
| Energy Bolt/SMG Mode  | Heavy Anti-Personnel (Tier 3) |

## Weapon Mechanisms

- Firing Mechanism: In sniper mode, the round is pushed into the chamber through the loading system from the bottom-loading box magazine via gas operation. The high-pressure gas from the cartridge being fired is utilized to chamber a new round and to eject the spent case. The gas effects the piston head to extract and eject the spent case, to chamber the cartridge, and, to unlock the action. In SMG mode, a specially made variant of the [YB-28A Triple-Power Magazine](#) is stored in the weapon's stock. The power magazine provides the energy to support 30 bolts of fire in the SMG mode.
- Loading: The Light Armor Tactical Rifle is loaded with a detachable magazine, carrying either 10 or 15 rounds, depending on the magazine type. The YB-28A Triple-Power Magazine can be recharged in less than five seconds as long as the weapon is attached to any variant of the [Ke-M2 "Mindy" Series of Power Armor](#).
- Mode Selector: The safety can be turned on or off via AIES. There is also a manual Magnetic Pulse Generator safety.
- Firing Modes: Semi Automatic in sniper mode, Fully Automatic in SMG mode.
- Safety Mechanism: AIES link allows for Magnetic Pulse Generator Safety; essentially shuts the gun down. Manual safety trigger is located on top of the selected scope in the form of a green/red light switch.
- Weapon Sight: The weapon can be aimed through AIES integration or traditionally, via any of the variable, standard-issue scopes.
- Attachment Hard Points: Any Ke-W5-1A designated scope can fit onto a scope mount on the top of the weapon. All Ke-W5-1A scopes automatically link with AIES. There are sleeves for the bipod, the foregrip, the buttpad, and the fabric sling on the weapon, all of which are modular, standard issue, and detachable.

## Other

## Pricing

- Ke-W5-1A Light Armor Tactical Rifle: 30,000 KS

## Individual Components and Attachments

- Fabric Sling: 25 KS
- Ke-W5-1A 30x Multi-spectrum Variable Zoom AIES-linking scope: 4,000 KS
- Ke-W5-1A 50x Multi-spectrum Variable Zoom AIES-linking scope: 4,500 KS
- Ke-W5-1A 100x Multi-spectrum Variable Zoom AIES-linking scope: 6,000 KS
- Bipod: 150 KS
- Foregrip: 150 KS
- Buttpad: 100 KS
- Large Magazine Replacement (15 Round Magazine instead of Standard 10): 750 KS
- [YB-28A Triple Power Magazine \(30 Pulses per Magazine\)](#): 175 KS

## Ammunition

| Ke-W5-1A 20×100 LATR Rounds Price Quickchart    |                       |
|---|-----------------------|
| Type  | Price (100 Round Box) |
| Standard Ball Type                              | 3000 KS               |
| Armour-Piercing Fin-Stabilized Discarding Sabot | 4000 KS               |
| High-Explosive Aether Incendiary                | 3500 KS               |
| Ke-W5-1A LATR Power Magazine Price Quickchart   |                       |
| Type  | Price                 |
| <a href="#">YB-28A Triple-Power Magazine</a>    | 175 KS                |

## OOO Notes

This page was originally created on 2017/06/01 10:19 by [Immortal Cyan](#).

Approved by Ametheliana on September 20, 2017.

Approval Thread:

<https://stararmy.com/roleplay-forum/index.php?threads/yamatai-ke-W5-1a-light-armor-tactical-rifle.59794/>

| Star Army Logistics       |   |
|---------------------------|---|
| Supply Classification     | Class G - WEAPONS INDIVIDUAL SMALL ARMS |
| Products & Items Database |   |
| Product Categories        | weapons: power armor                    |

| Products & Items Database |                                   |
|---------------------------|-----------------------------------|
| Product Name              | Light Armor Tactical Rifle        |
| Nomenclature              | Ke-W5-1A                          |
| Manufacturer              | <a href="#">Ketsurui Zaibatsu</a> |
| Year Released             | <a href="#">YE 40</a>             |

<sup>1)</sup>

119.38 cm

<sup>2)</sup>

36.2874 Kg

<sup>3)</sup>

40.8233 Kg

<sup>4)</sup>

24,140.2 m

From:

<https://wiki.stararmy.com/> - **STAR ARMY**

Permanent link:

[https://wiki.stararmy.com/doku.php?id=stararmy:weapons:ke-w5-1a\\_latr](https://wiki.stararmy.com/doku.php?id=stararmy:weapons:ke-w5-1a_latr)

Last update: **2023/12/21 01:03**

