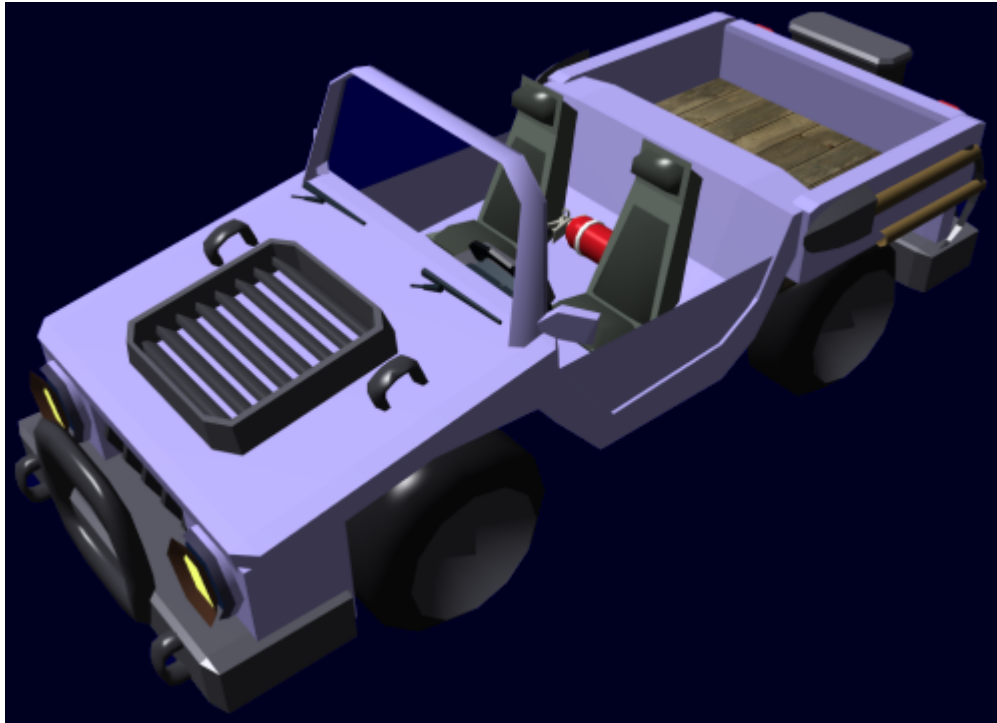


Type 30 Light Utility Truck

Designed and deployed in [YE 30](#), the [Ketsurui Zaibatsu](#)'s Light Utility Truck is a standardized, mass-production version of the various types of [Old Utility Truck](#). It is fielded by the [Star Army of Yamatai](#) and the [United Outer Colonies Peacekeeping Forces](#); captured LUTs were also used by the [NMX](#) in the [Second Mishhuvurthyar War](#).



Type 30 utility trucks are open-top 4 x 4 trucks with seats for two people. The driver sits on the left side while a passenger sits on the right. Behind the seats is the cargo bed, where the soldiers can store supplies and equipment. The trucks utilize a [Durandium Alloy](#) unibody construction and are quite durable. Their windshields are made of [Transparent Durandium](#). The trucks are equipped with seat belts.

The standard utility truck can fit into the rear compartment of a [Ke-T4 "Fox" Combat Aeroshuttle](#) if the seats and supply chests are removed. Up to four can fit into a [Ke-T7 "Raccoon" Transport Shuttle](#).

A gun mount is available for the trucks. It is an rounded rectangular arch that sits over the front of the cargo bed, just behind the driver and co-driver seats. A gunner can stand in the back and fire a mounted [GP-12 Phased Pulse Rifle](#), [Machine Gun](#), [35mm](#), [Type 30](#), [Ke-M4-W2901 Light Armor Service Rifle](#), or other weapon.

Damage Capacity

- Body: 5 SP (Mecha Scale)

Variations

The trucks are available in different varieties to fit different mission needs:

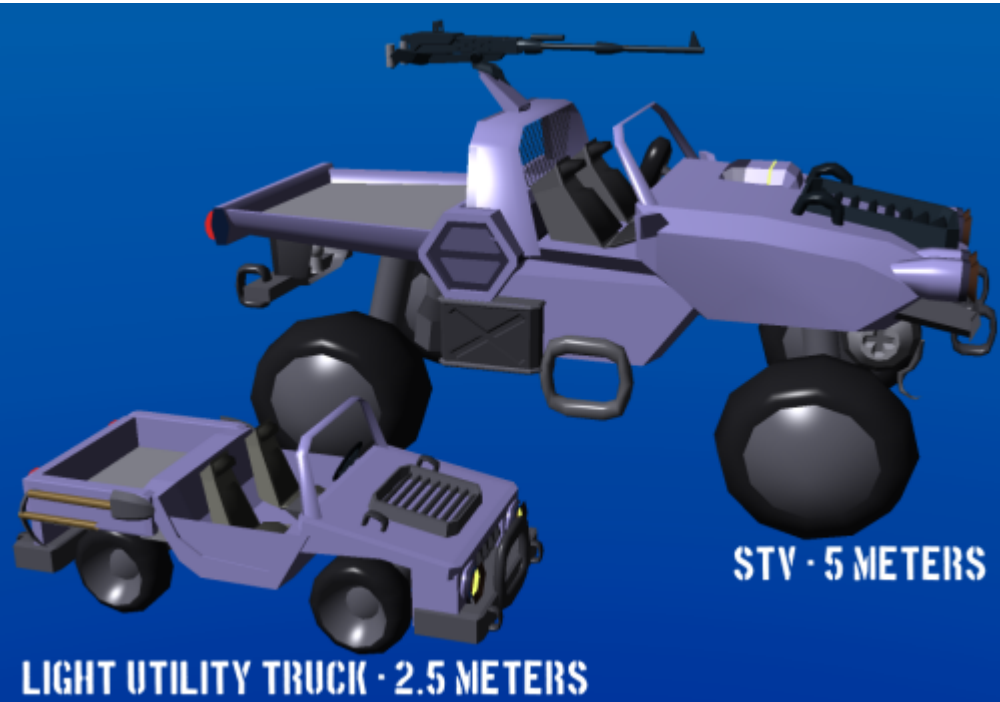
Two-Seaters

These standard models have maximum cargo room.

- Ke-K1-1A - Aether Powered
- Ke-K1-1B - Battery Powered (Drives 2000km per charge)
- Ke-K1-1C - Fusion Powered

Images





Star Army Logistics	
First Used	YE 30
Products & Items Database	
Product Categories	vehicles
Product Name	Light Utility Truck
Nomenclature	Type 30
Manufacturer	Ketsurui Zaibatsu

From:
<https://wiki.starmy.com/> - STAR ARMY

Permanent link:
https://wiki.starmy.com/doku.php?id=starmy:vehicles:kz_type_30_light_utility_truck&rev=1695163851

Last update: 2023/12/20 22:47

