

Star Army Infantry Training

This page provides information on the additional training that members of the [Star Army Infantry](#) receive after basic and in the field.



Survival Training

Infantry will typically receive training in one or more of the following environments:

- Desert - covers surviving in areas where water is limited or not available
- Jungle - covers surviving in dense forest areas located in high temp areas
- Arctic - covers surviving in frozen environments, and extreme cold situations
- Temperate - covers surviving in woodlands
- Urban - covers surviving in urban settings, both populated and unpopulated
- Space - covers surviving on airless bodies, and in space itself

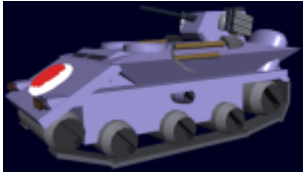
Training consists of finding or making shelter, locating water, food sources. Familiarity with natural threats and hazards.

Fighting Vehicle training

- [Type 31 "Troll" Tank](#)



- [Type 30 Tankette](#)



- [Type 30 Surface Terrain Vehicle](#)



- [Artillery Trailer, STV, Type 31](#)

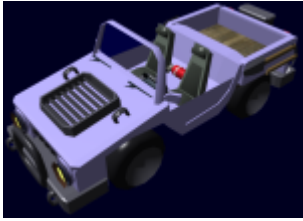


Support Vehicles

- [Recovery STV](#)



- [Type 30 Light Utility Truck](#)



- [Type 30 Surface Terrain Vehicle](#)



- [Type 30 Container Handling Vehicle](#)

Aerospace Vehicles

- [Yusou Type 33 Grav-APC](#)



Demolitions training

Some members of the Infantry are trained in the use of demolitions.

- [Type 31 Plastic Explosive \(T31PE\)](#)
- [Gravity Reactive Plastic Explosive](#)

Advanced Weapon Training

- [Indirect fire](#) weapons (artillery, mortar and grenades)
- [Suppression fire](#)
- [Machine Gun, 35mm, Type 30](#)

Structures

All members of the Infantry receive training in the installation and usage of [Type 33 Prefab Outpost](#)

[Modules](#) modules.



From:

<https://wiki.starmy.com/> - **STAR ARMY**

Permanent link:

<https://wiki.starmy.com/doku.php?id=starmy:training:infantry>

Last update: **2023/12/21 01:02**

