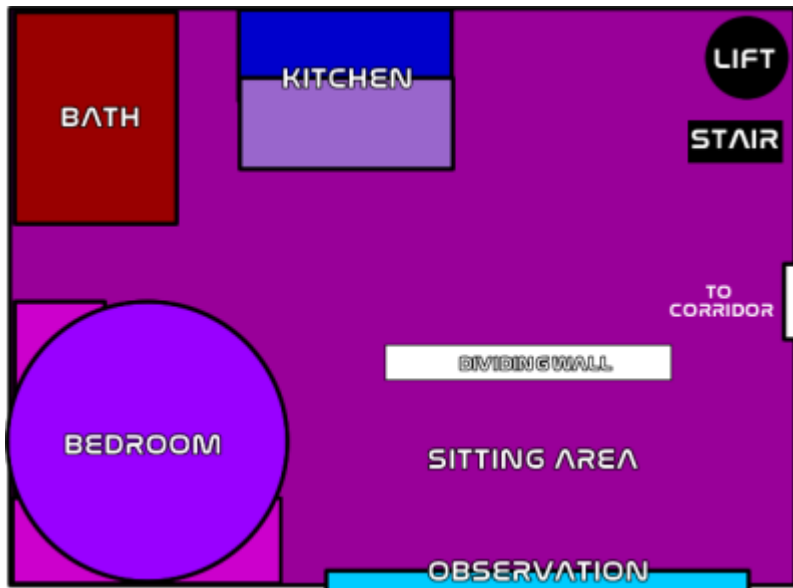


Katsuko's YSS Tokyo Suite

The customized suite of [Taisho Ketsurui-Motoyoshi Katsuko](#), [Chujo Motoyoshi Eri](#) and [Taisa Kage Yaichiro](#) on the [YSS Tokyo](#).



Connections

There are stairs and a dedicated lift that go to the [YSS Tokyo Command Offices](#) and the bridge above.

The Bedroom

The bedroom is an enclosed circular chamber surrounded by carved and etched [Transparent Durandium](#) panes that shift to allow access to the main area of the suite. The epicenter of the room is a large custom luxury style [nest](#) with soft, comfortable mounds of pillows and blankets. Unlike most nest-style beds, the raft option is not included to accommodate an adjustable interior that can be customized to the desired firmness and temperature of the users.

The interior has been outfitted with a complete three hundred and sixty degrees of volumetric projectors, which allows for a complete [Volumetric Windows](#) experience.

Under Bed Storage

The built-in under the bed storage is utilized for various pleasure toys and implements. It displays these items much like one would expect to find in an expensive armory on backlit trays with a foam cushioning system. The bed also has a built-in automated sanitization drawer for the cleaning and sterilization of

these items.

Closets

Three walk-in style closets and storage rooms are hidden behind the panels which are designed for the storage of clothing and personal belongings.

Sitting Area and Private Observation

A large bulbous [Zesuaium](#) observation window looks out over the bow from the command tower of the [YSS Tokyo](#). It provides breathtaking views of space and the forward section of the ship and is the focal point for a sitting room which consists of two large comfortable leather sofas decorated with the [Star Army Hinomaru](#) and the logo of the [First Expeditionary Fleet](#).

Two carved oak end tables and a [Coffee](#)-style table, a gift from [Motoyoshi-Igarashi Yuka](#) that were made in [Tokyo](#) provide a place to rest a drink. Decorative lamps are placed on the end tables for use when the main illumination of the room is lowered. A retractable [volumetric window](#) can be lowered in front of the window for media presentations.

A well-stocked bar slides out from the wall for use when entertaining or after a long day on the bridge. [Ketsurui-Motoyoshi Katsuko](#) tends to keep a large selection from the family's winery at [Ainu Orchards](#).

Kitchenette and Service

Occasionally [Ketsurui-Motoyoshi Katsuko](#) enjoys the opportunity to cook or have her daughter [Motoyoshi Tachiko](#) over to cook for her, so she had a small well-equipped kitchen installed in the suite. The kitchen maintains the open deck plan with the rest of the suite and has an island and a convertible buffet bar that has a line of stools to encourage socialization during cooking.

Bath House

The bathhouse has rare [Taie](#) marble floors and walls donated by the [Motoyoshi Clan](#). The room has a circular twelve-person jacuzzi-style tub in the center of the room with a mosaic of the symbol of the [Motoyoshi Clan](#) at the bottom of the three-foot deep pool.

There is a large walk-in shower with a built-in media screen and multiple adjustable showerheads.

Caretaker Services

The trio has an entire team of [Star Army Caretaker](#) to attend to their needs and the upkeep of their suite. They are responsible for cleaning and providing maid and butler services.

OOC Notes

This page was originally created on 2020/03/11 11:42 by [andrew](#).

From:
<https://wiki.stararmy.com/> - **STAR ARMY**

Permanent link:
https://wiki.stararmy.com/doku.php?id=stararmy:starships:yss_tokyo:interiors:katsukos_suite&rev=1699804610

Last update: **2023/12/21 04:47**

