

YSS Sakishima Modifications and Interiors

Notable Locations

Bridge

The Bridge, the command center of the Sakishima is a small compartment located on the forward most habitable point of deck 1. The bridge is where every aspect of the ships operation is controlled and commanded from.

Engineering

Located in the forward half of deck 2, the engineering space houses the ships power generation, CDD drive and fabrication unit. The compartment is sectioned off with transparent walls and floors.

Cargo/Hangar Bay

The shared cargo and hangar bay is located in the aft of deck 2. The forward half is packed with stacking cargo containers full of the ships supplies and spare parts as well as a container holding the ships compliment of power armor. The aft half of the bay is where the Sakishima's Kumo class shuttle is stored and operated from. In a recent refit, the Sakishima's cargo bay was expanded, using up a good portion of the open expansion space on deck 2, allowing for a larger area to store containers and other hardware needed by the Sakishiam's crew.

Wardroom

The wardroom, located on deck one behind the bridge is the ships common space, dining area and conference room rolled up into one.

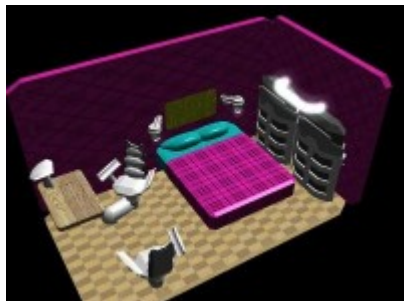
Medical Bay

The ships small hospital, located on deck one, aft of the bridge and across the corridor from the wardroom. The mostly automated center contains the ships mental backup and transfer unit, treatment unit, surgical unit and hemosynth tube.

Crew Cabins

The Sakishima has five standard crew cabins located in the aft most section of deck one. The ship has been modified during a recent refit at Leo Star Fortress, converting some of her future expansion space over, adding an additional 2 standard crew cabins.

Cabin 1 has been remodeled to Yoshi's specs. It gives herself a cabin and a office aboard the small ship.



Main Passage and Corridors

The Sakishima has a zero-g vertical passage that spans both decks. Standard corridors stretch the length of the ships center line on deck one and partially on deck two save for where engineering and the cargo/hangar bay take up most of the space.

Onsen

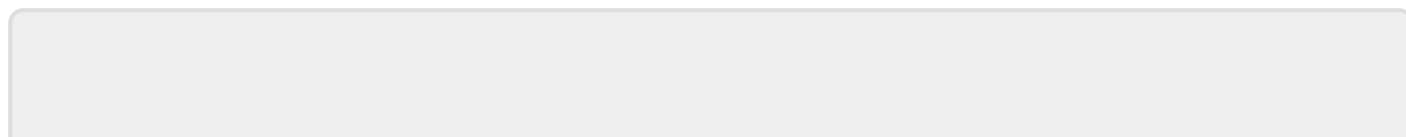
Located on deck 2 in the space between the engine room and cargo hold/shuttle bay. The small Onsen was built using some of the ships future expansion space during her overhaul at Leo Star Fortress in late YE35. It features a hot bath and is decorated with rocks and trees to make it look more like it is in an open setting.

Modifications

The *YSS Sakishima* had a still located somewhere in Engineering, an expanded cargo hold, 2 additional crew cabins and an onsen, but otherwise is a stock [Chiaki-class \(1B\) Escort Destroyer](#).

OOO Notes

This page was originally created on 2013/07/18 22:01 by Gunsight1.



From:

<https://wiki.stararmy.com/> - **STAR ARMY**

Permanent link:

<https://wiki.stararmy.com/doku.php?id=stararmy:starships:sakishima:about&rev=1540348663>

Last update: **2023/12/21 02:33**

