

# YSS Aeon II Modifications

## Modifications and Changes

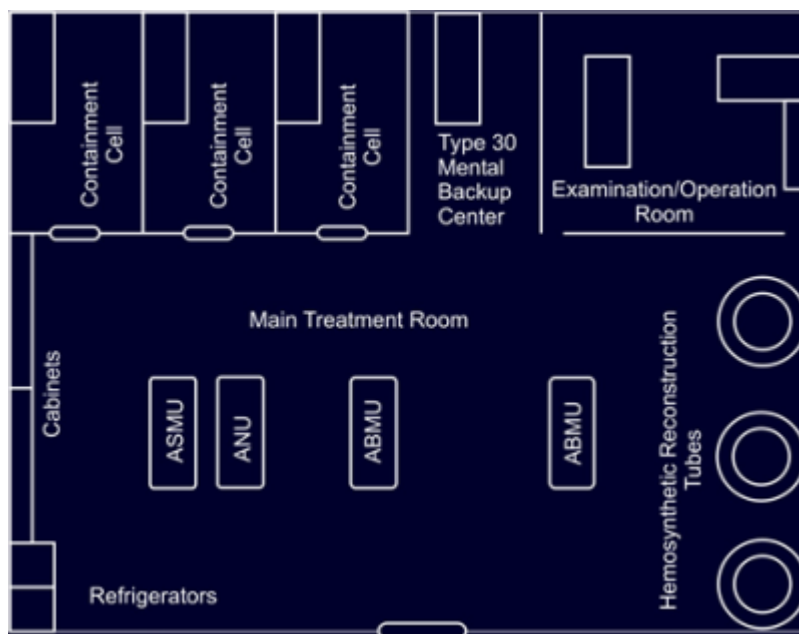
This page identifies any modifications to the [YSS Aeon II](#). These are things that the Captain has approved to be have changed.

### Ke-S3-F4200 Hanger Deck Package

The [Ke-S3-F4200 Hanger Deck Package](#) provides the Aeon II with a facility to launch and deploy space craft. It uses a smaller version of the [Ke-A1-R4200 Vehicle Subspace Deployment System](#) developed for the [Heitan-Class \(1B\) Carrier](#).

### Medical Center and Laboratory

The *Aeon II* features modified [Sakura Medical Laboratories](#). They are retrofitted with the [Type 30 Mental Transfer and Backup Unit](#), and the three medical beds were replaced with components from the [Autonomous Medical Treatment Center](#). The Aeon II has also been equipped with [Type 32 Remote Backup Unit](#).

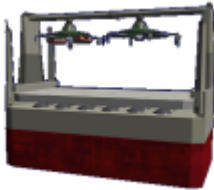


Each of the Aeon II Medbays features the following:

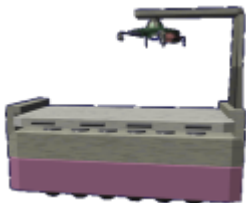
- 2 [Ke-J1-E3102 - Autonomous Basic Medicine Unit \(ABMU\)](#)



- 1 [Ke-J1-E3103 - Autonomous Surgical Medicine Unit \(ASMU\)](#)



- 1 [Ke-J1-E3101 - Autonomous Nurse Unit \(ANU\)](#)



- 1 [Portable Medical Scanner PMS-1M](#) station is mounted near the hatch on the right side as you enter.

Medical trained personnel can still work in the Medbay, but are primarily required for Away Teams.

From:  
<https://wiki.stararmy.com/> - **STAR ARMY**

Permanent link:  
[https://wiki.stararmy.com/doku.php?id=stararmy:starships:aeon\\_ii:mods\\_interiors&rev=1586430487](https://wiki.stararmy.com/doku.php?id=stararmy:starships:aeon_ii:mods_interiors&rev=1586430487)

Last update: **2023/12/21 02:31**

