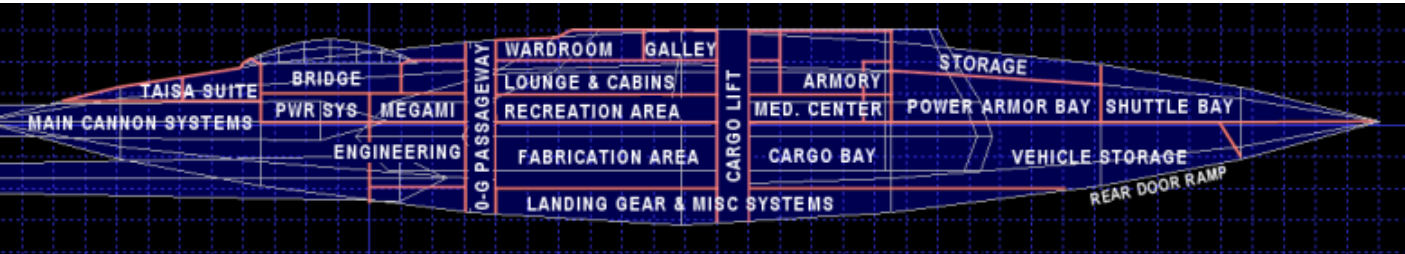


YSS Aeon Modifications and Interiors



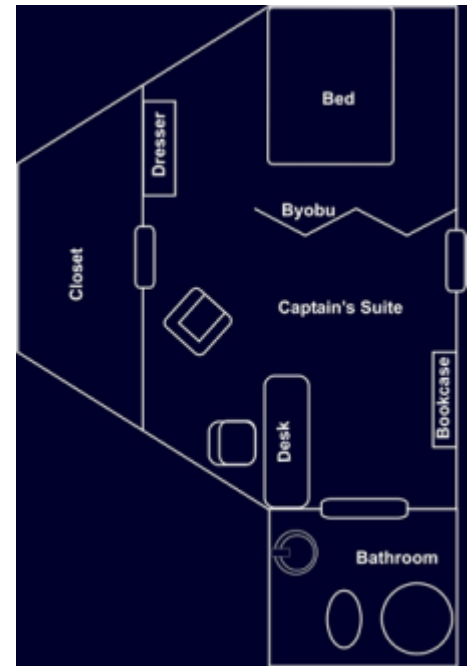
Deck	Compartments
1	Armory, Galley, Wardroom
2	Armory, Baths, Bridge, Captain's Suite, Crew Cabins, Laundry, Lounge, Showers
3	Computer, Medical Lab, Power Armor Bay, Power Systems Room, Recreation Area, Shuttle Bay
4	Catwalks for Deck 5 compartments
5	Engineering, Cargo Bay, Fabrication, Vehicle Storage
6	Landing gear and miscellaneous systems

Appearance

The *Aeon*'s hull is painted in squadron leader configuration, the main hull is gray, and the pylons are dark green.



Captain's Suite

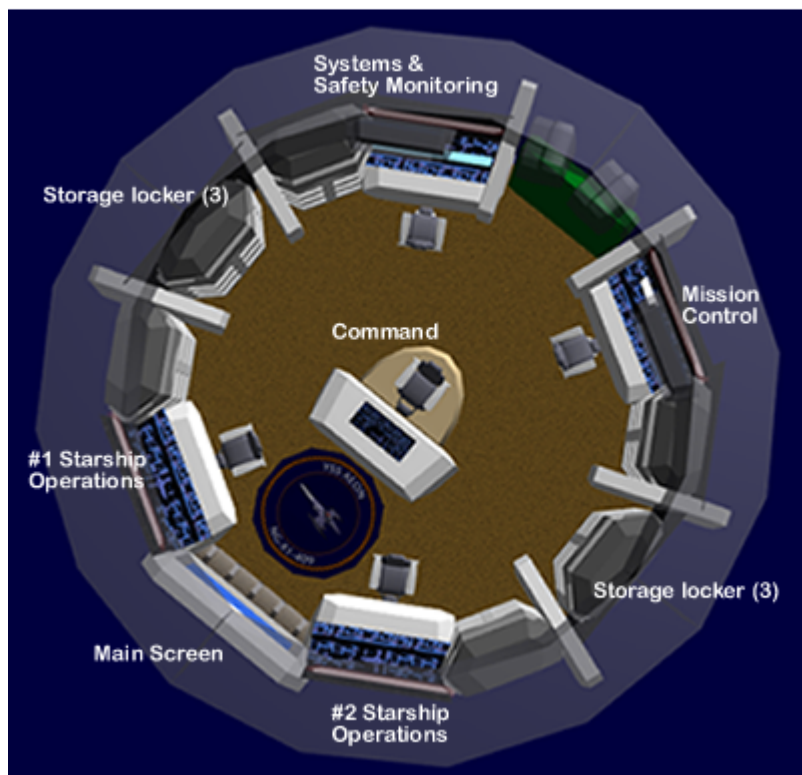


The captain's suite is a luxurious cabin located on deck two, forward of the bridge. Inside, the thick, soft, red carpeting matches that of the lounge. The room is lit more dimly than the rest of the ship using lamps placed throughout the interior and studio lighting rather than the normal ceiling lights. There is a very comfortable bed, a wooden dresser and bookshelf (with straps across the books to keep them from going anywhere if gravity failed) and a cozy reclining chair. A large walk-in closet is in the back of the room (going towards the front of the ship), along with a tiny bathroom (with a toilet and [shower](#)). The captain's suite's doorway is accessible from the passageway that encircles the bridge (where the escape pods are).

Katae has divided her cabin by adding a 🌀 [Byobu](#). The original painting has been replaced by [Keiko Gi](#) a member of the crew. It is now a beautiful four-panel folding screen showing a wonderful assortment of flowers including irises, tiger lilies, hibiscus, daisies, and peonies. A cherry branch festooned with delicate white flowers arches across the composition. She also added a work desk with a control panel linked to the ship's computer and a chair in the front corner of her room.

Bridge

All of the stations on the bridge are upgraded to use the [SPINE](#) interface. In [YE 35](#) the bridge chairs were replaced with [Starship Chair, Type 35](#) during repairs.



Station	Normal Function	Alert Function
#1 Starship Operations	Helm and Navigation	Helm and Primary Weapons
#2 Starship Operations	Science and Sensors	Sensors and Secondary Weapons
Mission Control	Mission Operations / Drones	Tactical
Systems Monitor	Unmanned	Damage Control
Command	Command and Control	Command and Control

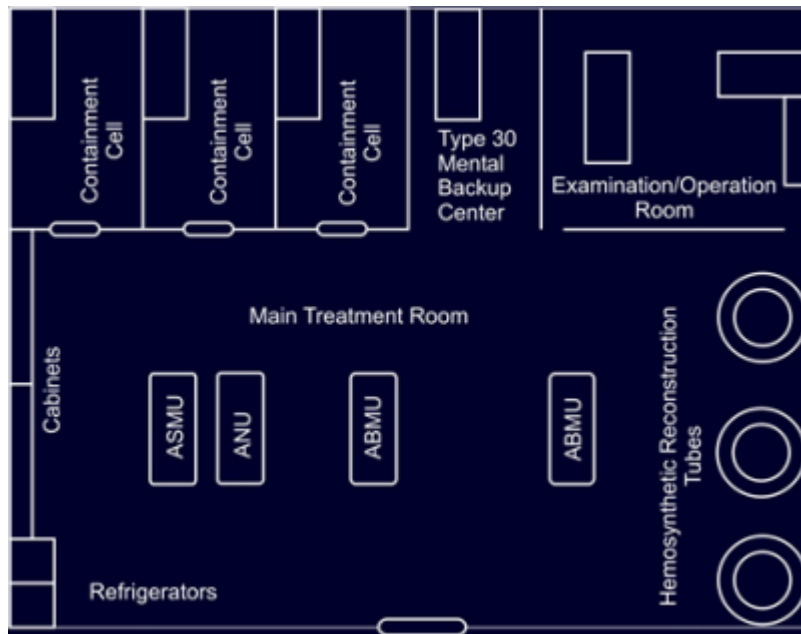
For other details about the bridge see: [Standard Small Starship Bridge \(Plumeria Type\)](#)

Crew Facilities

The *Aeon* features a [crew bath](#) which has a royal blue ceramic surface, and a [communal shower](#) with four showers, and a [communal toilet](#) for six.

Medical Center and Laboratory

The *Aeon* features a modified [Sakura-type Medical Laboratory](#) on deck 3, forward of the power armor bay. During the Battle for UX-25 the *Aeon*'s medbay was heavily damaged. Katae chose to have the medbay retrofitted with the new [Type 30 Mental Transfer and Backup Unit](#), and the three medical beds were replaced with components from the [Autonomous Medical Treatment Center](#). In YE 33 the *Aeon* was equipped with [Type 32 Remote Backup Unit](#).



The Aeon now features the following:

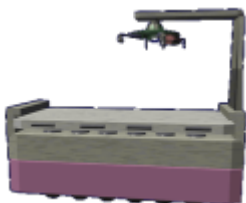
- 2 Ke-J1-E3102 - Autonomous Basic Medicine Unit (ABMU)



- 1 Ke-J1-E3103 - Autonomous Surgical Medicine Unit (ASMU)



- 1 Ke-J1-E3101 - Autonomous Nurse Unit (ANU)



- 1 [Portable Medical Scanner PMS-1M](#) station is mounted near the hatch on the right side as you

enter.

Medical trained personnel can still work in the Medbay, but are primarily required for Away Teams.

Recreation Area

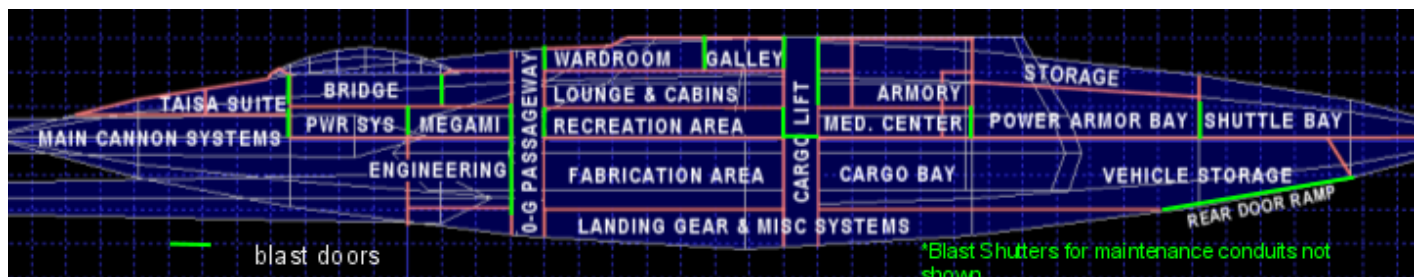
In addition to the [standard equipment](#), the *Aeon* now features two [massage units](#).

In YE 35 the Aeon room was modified with a [VCE Console](#).

Security Upgrades

In YE 32 while at [Kyoto](#), [Yamatai \(Planet\)](#) for repairs the following blast shutters were replaced with [Forcefield-Nested Isolation Doors](#) ones. All other shutters are original design.

- at the entrances to the armory (always locked and closed)
- at the entrance to the bridge
- at the entrance to the computer (always locked and closed)
- at the entrance to the captain's suite
- at the entrance to engineering
- at the entrance to the power armor bay
- between the shuttle bay and the power armor



In YE 34 the Aeon was upgraded with the [Type 33 Star Army Communications Network Encryption System](#)

Sensor dish

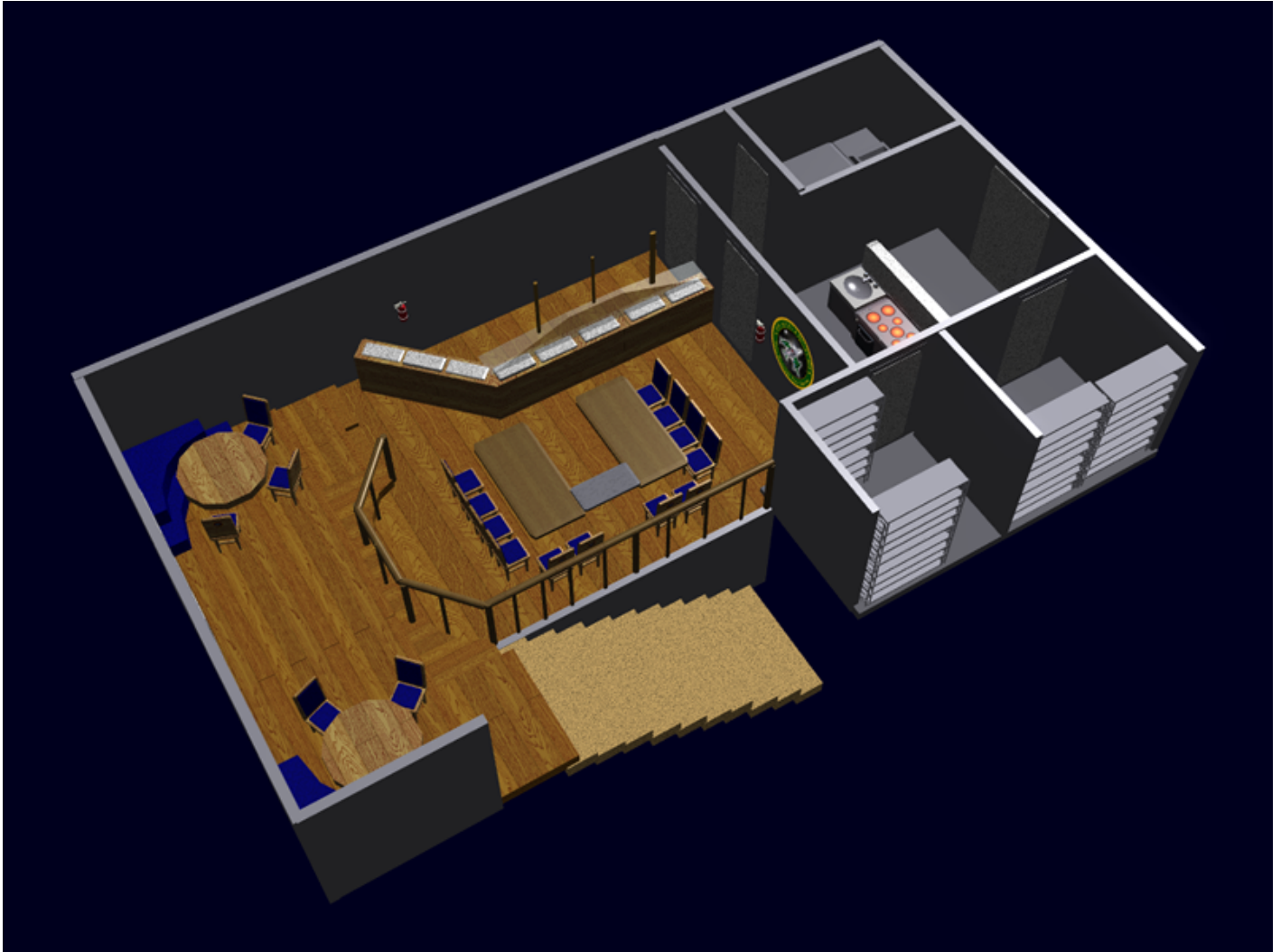
The *Aeon* on the port side cargo area on the underside has a forward-facing sensor dish.

Towing Support

The *Aeon* has a special attachment point at the aft of the ship that is designed to tow additional modules such as cargo pods and sensor arrays. Since the *Aeon* is currently on exploration missions, she typically carries an [Orbital Geological Survey Platform](#).

Wardroom


The Aeon's [wardroom](#), located on Deck 1, is a pretty big place for a ship meant for such a small crew complement. There are 🌳 [Bonsai](#) trees placed behind the two booth seats. The color of the walls of the wardroom have a slight mismatch, and some of the floor tiles have soot marks from its last repair.




Weapons Systems



The standard Plumeria-class carries the following weaponry:

- 1 [Ke-S3-W3020 Main Weapon Array](#) (Tiers 13 through 15, Light Anti-Capital Ship through Heavy Anti-Capital Ship ( **Fix Me!** : Staff needs to determine which))
- 2 [Ke-S3-W2901 Positron Accelerator Cannons](#) (1 per pylon; Tier 12, Heavy Anti-Starship)
- 1 [KFY Graviton Beam Projector](#) on the ship's ventral stern.
- 2 torpedoes on underbelly hard points (typically [Ke-Z1 Series Anti-Starship Torpedoes](#))

The more recent “Heavy Weapons” variant of the Plumeria also mounts the following:

- 4 [Heavy Dual Anti-Starship Gun Turrets](#) (Tier 11, Medium Anti-Starship)
- 11 [Heavy Quad Anti-Mecha Cannons](#) (Tier 8 or Tier 9, Medium Anti-Mecha or Heavy Anti-Mecha ( **Fix Me!** : Staff needs to determine which)/Tier 9, Heavy Anti-Mecha)

From:
<https://wiki.stararmy.com/> - **STAR ARMY**

Permanent link:
https://wiki.stararmy.com/doku.php?id=stararmy:starships:aeon:mods_interiors&rev=1616755046

Last update: **2023/12/21 02:31**

