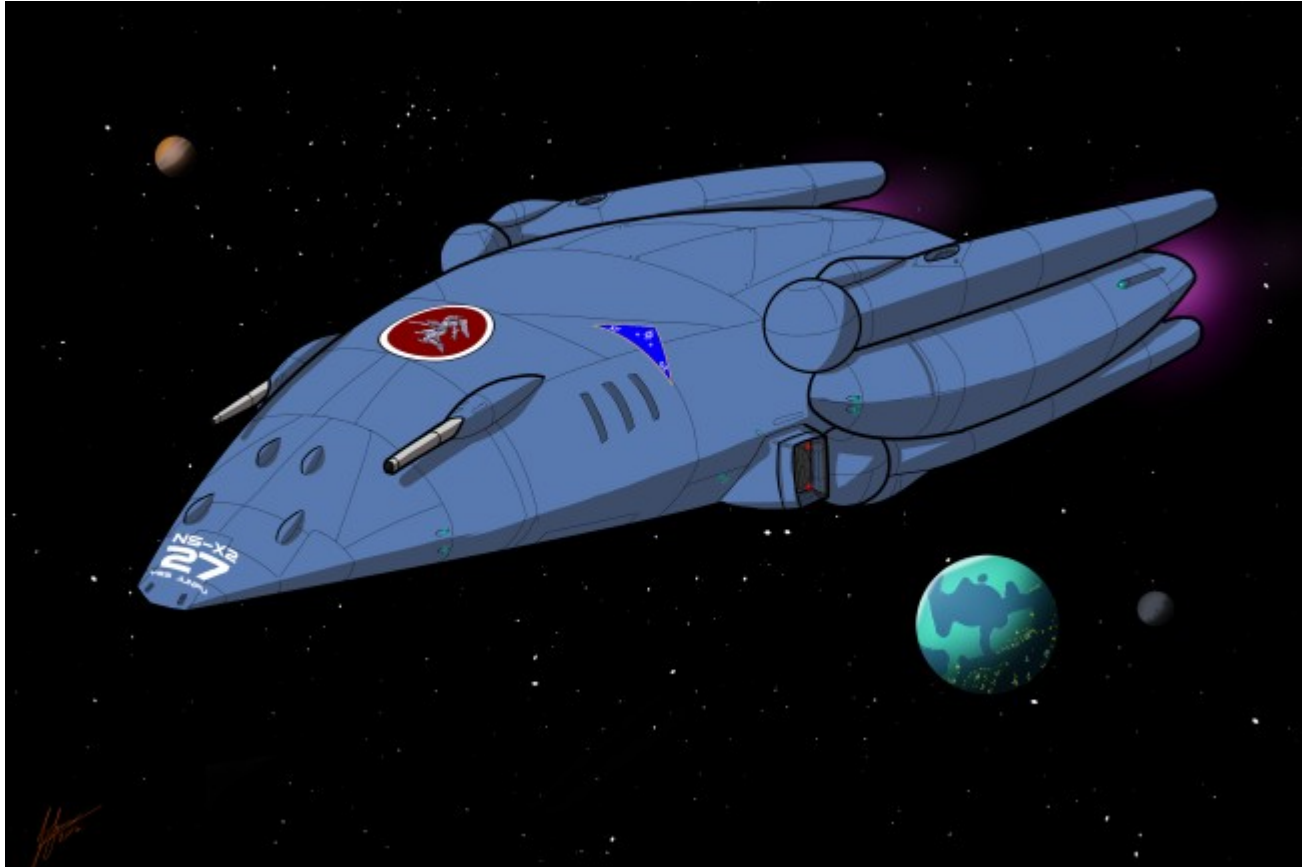


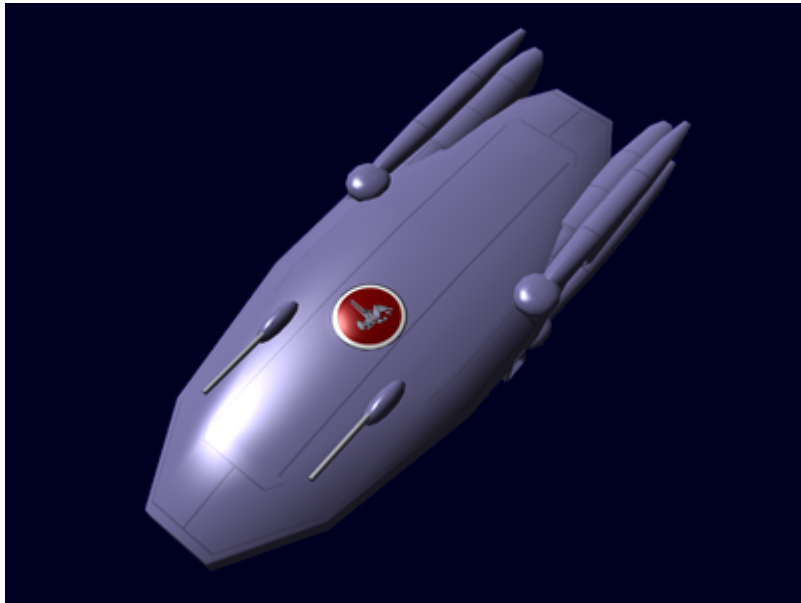
Midori-Class Scout Ship

The *Midori-Class* Scout ship is the latest design for recon and surveillance by the [Star Army of Yamatai](#). It became available in [YE 32](#).



About the Midori Class

The *Midori-Class* Scout ship is named after [Ketsurui Yui-Taisho](#)'s daughter [Ketsurui Midori](#). The designers felt that if the ship was to replace the [Yui-class Scout](#) series of scouts that were named after the [Taisho](#) that the replacement should be named after one of her daughters. The design features new sensory capabilities and a radical change in weapon load from its predecessors.



Appearance

The *Midori-Class* is a flattened oval with two large engine nacelles. Its hull is Star Army blue, and has the [Star Army Hinomaru](#) on the top. An airlock is visible on the port side, and aft are the four sensor arrays. On the top can be seen the two positron cannons, and on the bottom are the four torpedo tubes.

Statistical Data

General

Class: Midori-Class Scout Ship

Nomenclature: Ke-D6-1a

Type: Long-Range Recon, Scout, and Survey Ship

Designers: [Ketsurui Fleet Yards](#), [Takumi](#), [Ketsurui Zaibatsu](#)

Manufacturer: [Ketsurui Fleet Yards](#)

Organization Using This item: [Star Army of Yamatai](#)

Date entered service: [YE 32](#)

Crew and Accommodations

Crew: 14

Emergency Capacity: 48 people can fit aboard in an emergency, but the ship would be extremely cramped.

Dimensions

- Length: 101 meters (331.28 feet)
- Width: 40 meters (131.2 feet)
- Height: 15 meters (49.2 feet)
- Decks: 2 (4 meters each)

Propulsion and Range

Speeds

The *Midori-Class* is a fast vessel.

- Atmospheric: Cruise: 2,450 kmph (1,522 mph) / Maximum: 3,368 kmph (2,093 mph)
- Sublight Engines: .375c (~112,422 kilometers per second) (~69,856 miles per second)
 - Acceleration:: .015 c/sec 0 to max in 25 seconds.
- [Combined Field System/Continuum Distortion Drive](#):
 - Minimum: Resting motionless
 - Cruising Speed: 15,778.8c (~1.8 light-years per hour)
 - Maximum Speed: 19,723.5c (2.25 ly/h)
- Hyperspace Drive: 447,066c (0.85 ly/m)

This ship is equipped with [Anti-FTL field](#) countermeasures.

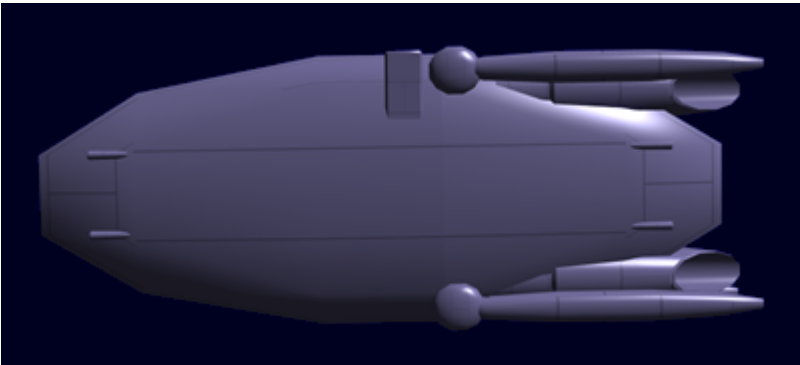
Durability and Maintenance

The *Midori-Class* as a ship intended to operate without support, it is built with ease of maintenance in mind and is very durable, particularly its frame and main electrical systems.

Damage Capacity

See [Damage Rating \(Version 3\)](#) for an explanation of the damage system.

- Hull: 20
- Shields: 20 (Threshold 2)



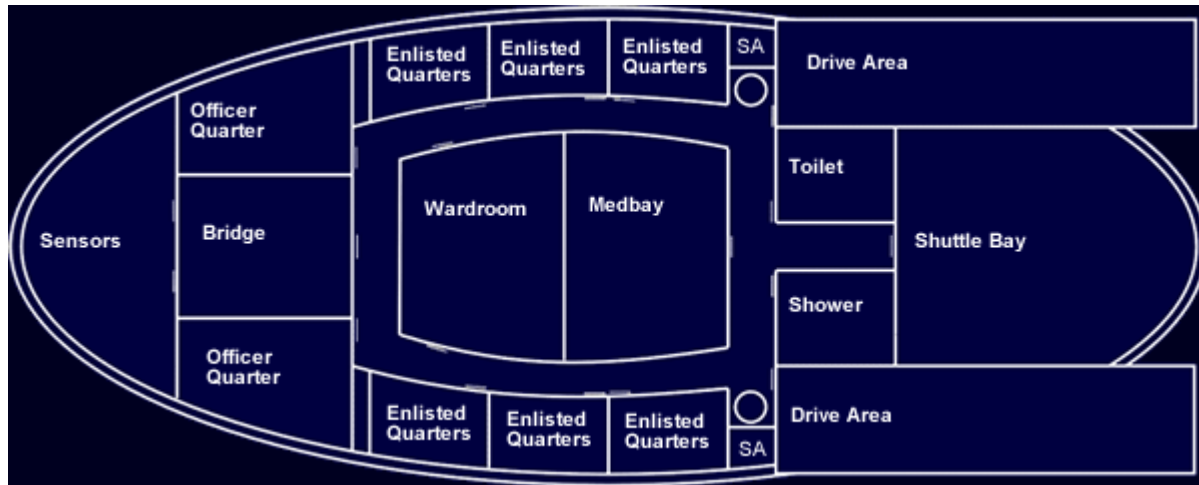
Inside the Midori



Deck	Sections
Over deck	Maintenance Access to Ke-D6-W3200 , shuttle bay door mechanism, Escape pods
One	Sensors , Bridge , Wardroom , Quarters , Medbay , Toilet , Showers , Wardroom , Engineering , Shuttle bay
Two	Forward Tubes , Computer Room w/MEGAMI w/Psionic Signal Controller , Armor Storage Rack , Armory , Fabrication Area , Recreation Area , Cargo Area , Docking airlock , Ships Locker , Laundry Room , Engineering , Aft Tubes , Vehicle area
Sub Deck	life_support , Landing Gear , Vehicle ramp

Deck 1

Deck 1 is primarily dedicated to providing for the crews needs.



Sensors

The primary avionics for the *Midori-class* are located in the bow on deck one. It is accessed by two maintenance hatches in front of the bridge.

Passive Omni-directional Sensors

- [Ks-MIES-E3010 - Aether Wave Detection and Ranging System](#)
- [Ks-MIES-E3011 - Wave-front Affinity Resonance Monitoring System](#)
- [Ks-MIES-E3012 - Imaging Array](#)
- [Ks-MIES-E3013 - Subspace Mass Detector](#)
- [Ks-MIES-E3014 - Mixed Sensor Array](#)

Active Omnidirectional Sensors

- [Ks-MIES-E3020 - Aether Pulse Doppler Rapid Tracking System](#)
- [Ks-MIES-E3021 - Quantum Remote Scanner](#)
- [Ks-MIES-E3022 - Hyperspace Pulse Doppler Detection and Tracking System](#)

Uni-directional Sensors (Passive)

- [Ks-MIES-E3030 - Forward Sensor Cluster Array](#)

Electronic Counter Measures

- [Type 31 Electronic Warfare Suite](#)

Bridge

The *Midori*'s bridge is a [Standard Small Starship Bridge](#) set in a reinforced bulkhead area. Access to the consoles for maintenance is done through maintenance hatches, and these lead into the Avionics area.

Quarters

The *Midori-class* has crew accommodations for fourteen. They run parallel to the wardroom along the outside of the deck. They consist of:

- 2 [Standard Star Army Officers' Cabin](#) located on either side of the bridge.
- 6 [Standard Star Army Crew Cabin \(Enlisted\)](#) or [Traditional Nekovalkyrja Nests](#) depending on crew compliment.

Toilet

The *Midori-Class* has a six person [Communal Toilet](#) on deck one for use by the rest of the crew. It is located on the starboard side opposite the medbay.

Showers

The *Midori-Class* has a six person [Communal Shower](#) on deck one for use by the rest of the crew. It is located on the port side opposite the medbay.

Engineering

The *Midori-class* has all the features of a [Standard Star Army Engineering Bay](#), but is laid out differently. The main control area of the engineering section is located on deck two, and houses the primary and secondary generators.

Drive Area

This area is where the *Midori-Class*'s FTL and STL drives are located. They are accessible from both decks, but the primary access is through the lower deck.

Medbay

The *Midori-Class* features a modified [Sakura-type Medical Laboratory](#), which includes the following

enhancements:

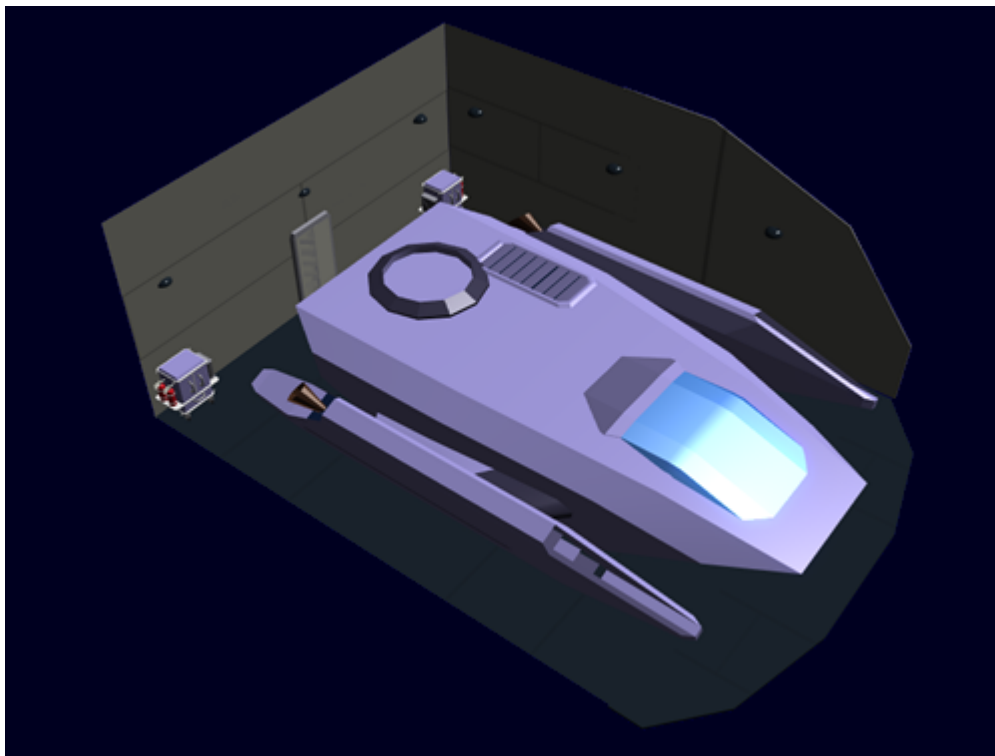
- [Medical Scanner Charging Station](#) for [Portable Medical Scanner PMS-1M](#)
- [Type 30 Mental Transfer and Backup Unit](#) with [Type 32 Remote Backup Unit](#)

The following optional item can be installed to assist medical personnel.

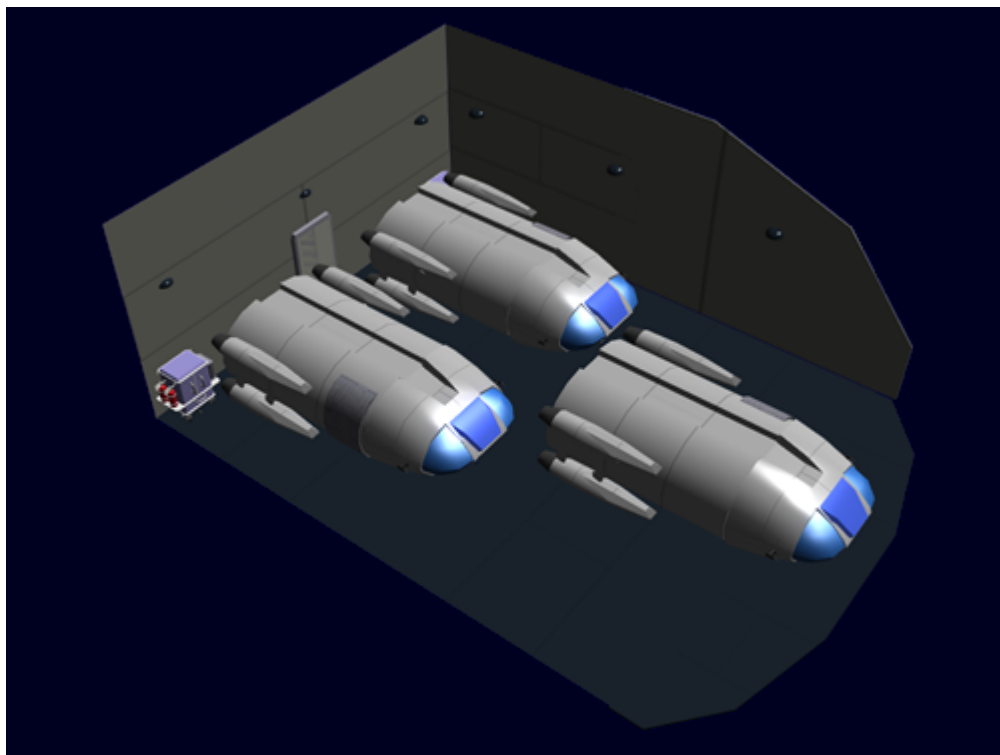
- [Ke-J1-E3101 - Autonomous Nurse Unit \(ANU\)](#)
- [Ke-J1-E3100 - Autonomous Triage Unit \(ATU\)](#)
- [Ke-J1-E3102 - Autonomous Basic Medicine Unit \(ABMU\)](#)

Shuttle Bay

The *Midori-Class* has a compact shuttle bay, that has an internal space of 12m x 10m x 5m. The bay opens at the top and the two halves lower and slide into the over deck. Along the three walls are a series of lights that depending on the conditions outside the shuttle bay they illuminate the bay in either white or red light. The floor is glossy black, and has an illuminated grid pattern to assist with landing. During deployments the two [Star Army Tool Lockers](#) are secured to the forward wall.



It can hold the following a single [Ke-T7 "Raccoon" Transport Shuttle](#) shown above. Or it can hold up to three [Ke-T8 "Kuma" Multi-role Shuttles](#). Typically only two are stored but it is possible to house three with a meter of space around each.



Wardroom

The *Midori-Class* has a standard [Standard Star Army Wardroom](#) located just aft of the bridge. It serves as one of the main social areas available on the ship. There are two [Single Toilets](#) in the wardroom for the convenience of the crew.

Deck 2

Deck 2 is more mission and ship oriented.



Aft Tube Rooms

These are the rear firing torpedo tubes are located. They are on deck two in the rear. Unlike the forward tubes, these aft tubes can not change out warheads. That requires a technician to manually make the change.

Armor Storage Rack

The *Midori* does not have a dedicated power armor bay; instead it uses a [Armor Storage Rack \(Type 31\)](#) with a capacity for eight suits. This room is located near the airlock.

Cargo Area

The *Midori* has a cargo area with most of the [standard cargo area](#) features. There is a small lift capable of holding a SSCC-Medium. The Cargo area floor space including the lift is roughly 16 meters by 14 meters.

Docking Airlock

The *Midori-Class* features a [docking airlock](#). Beyond the outer door is a sloped floor for use when the ship is on the ground. An extending ramp comes out below this part of the airlock and blends into it. This allows personnel to easily walk up to the airlock. The airlock is also how power armor exit and enter the ship. During armor operations an atmosphere shield is engaged and both of the airlock doors remain open.

Fabrication Area

The *Midori-class* [fabrication area](#) is located to port of the computer room. The fabrication area provides the means for the crew to repair and maintain all ship systems and vehicles.

Forward Tubes

This is where the forward torpedo tubes are located. They are on deck two in the bow. There is an autoloader mechanism that holds an additional three torpedoes per tube. The autoloader system can also change out the warhead prior to loading

Recreation Room

The left side of the Recreation Room devoted to sparring and exercise, while the right side of the recreation area contains one holographic chamber designed to simulate various environments for

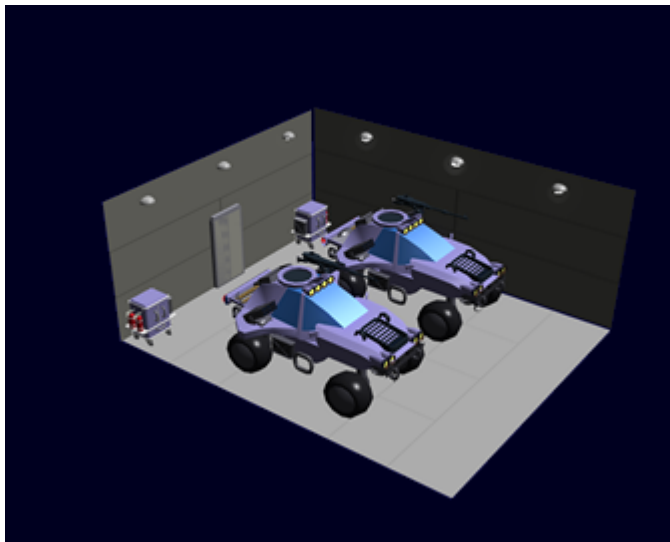
training, designing, or pleasure purposes. An [Ke-J1-E3105 - Autonomous Massage Unit \(AMU\)](#) is also present for use after workouts.

Ships Locker

Located next to the airlock, this is where EVA equipment is stored in separate lockers and shelves. It also has a damage control station to house equipment for making exterior repairs.

Vehicle Area

The *Midori-Class* has a small vehicle area with internal space of 10m x 8m x 4m. The floor lowers 1 meter and then slopes to the rear while a ramp extends to allow vehicles to egress.



It can hold the following:

- 2 [Enclosed Surface Terrain Vehicle](#) or
- 4 [Type 30 Tankette](#) or
- 2 [Type 30 Surface Terrain Vehicle](#) or
- 4 [Type 30 Light Utility Truck](#) or any combination of the above that space allows

Sensor Array Access

Located on both decks, next to the vertical access ways, is the Sensor Array Access area. This is where the data and control connectivity is located and can be accessed and maintained.

Free Space

On deck two starboard side there is an empty room. This space was left free so that the crew of the ship could customize its usage.

Other Areas



Over Deck

This is the region between the upper hull and deck 1. It is an oversized maintenance conduit. It provides access to the dorsal weaponry, the drive nacelles, and the sensor array interconnect. It is also where the shuttle bay door mechanisms are located. The over deck varies in height due to the curve from 0 - 2.5 meters.

Under Deck

This is the region between the bottom hull and deck 2. It is an oversized maintenance conduit. It is where the landing gear, cargo bay doors and the vehicle bay door/ramp mechanisms are located. The under deck varies in height due to the curve from 0 - 2.5 meters.

Systems

Armored Hull

The *Midori-Class* hull design is based on providing a durable structure for survivability in remote areas. It is constructed as a one-meter thick double hull construction with [Durandium Alloy](#) framing between two .2 meter [Yamataium](#) layers. Set over a [Durandium Alloy](#) frame. The inside of the outer hull is coated in [Xiulurium](#) which when energized provides the ship with stealth capabilities.

Emergency systems

The *Midori-Class* has all the [Star Army Standard Starship Emergency Systems](#).

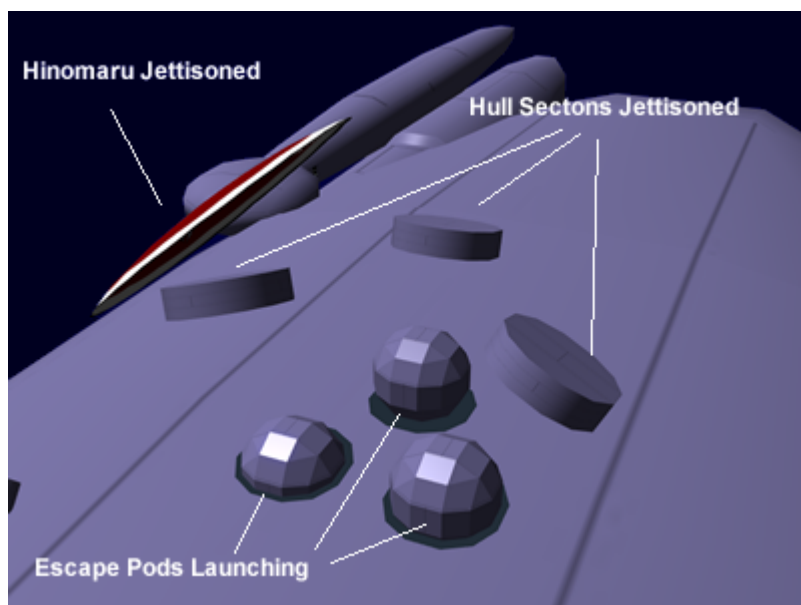
Damage Control Stations

- [Standard Damage Control Station](#) Locations
 - Behind vertical each access points
 - Bridge
 - Next to each officer quarter
 - Each Drive Area
 - Engineering
 - Shuttle bay
 - Vehicle bay
 - Overdeck
 - Underdeck

Escape Pods

The *Midori-Class* has three [Star Army Escape Pod, Type 30](#) stored in the Overdeck. They are located above the wardroom, covered by a protective panel that has the [Star Army Hinomaru](#) on it. The panel is jettisoned when launched. The actual entry point to each of the pods is flush with the ceiling in the wardroom.

Deployment sequence, [Star Army Hinomaru](#) shield jettisoned, hull sections ejected, pods launch.



Shutters

The *Midori-Class* has two types of shutters, standard shutters for non-critical locations, and

- [Standard Blast Shutters](#)
 - Drive Areas
 - Medbay
 - Midpoint of the side corridors on both decks
 - Covering the two vertical access points
 - Vehicle bay
- [Forcefield-Nested Isolation Doors](#)
 - Bridge
 - Computer Room
 - Armory
 - Shuttle bay
 - Power Armor Rack
 - Engineering

Savior Pod

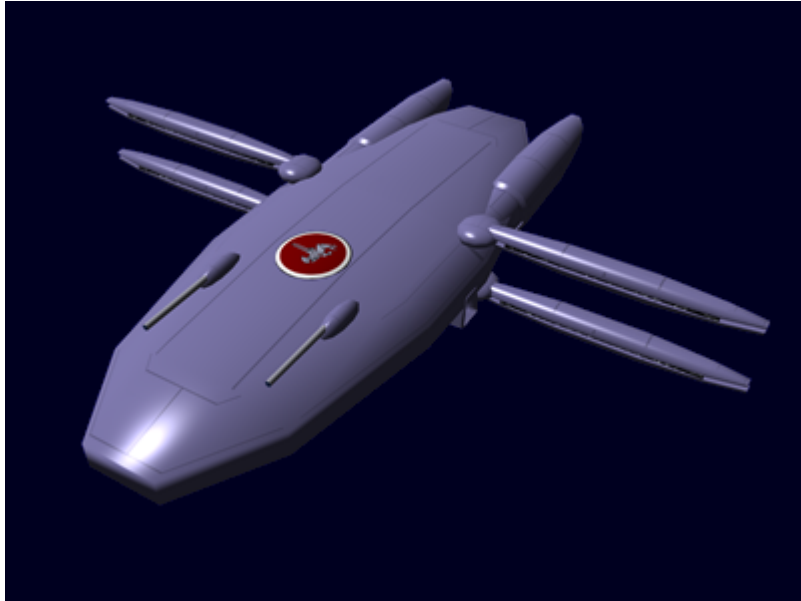
The *Midori-class* has a single [Soul Savior Pod](#) for crew backups. It is located in the Computer room.

Ke-D6-E3200 Sensor Array

The *Midori-Class* has a unique sensor configuration, when not in use the array closes up to protect the components, and swings back to align with the hull.

When deployed each of the array limbs pivots 90 degrees from its stored position, and then opens up laterally.

- View details on the [Ke-D6-E3200 Sensor Array](#).



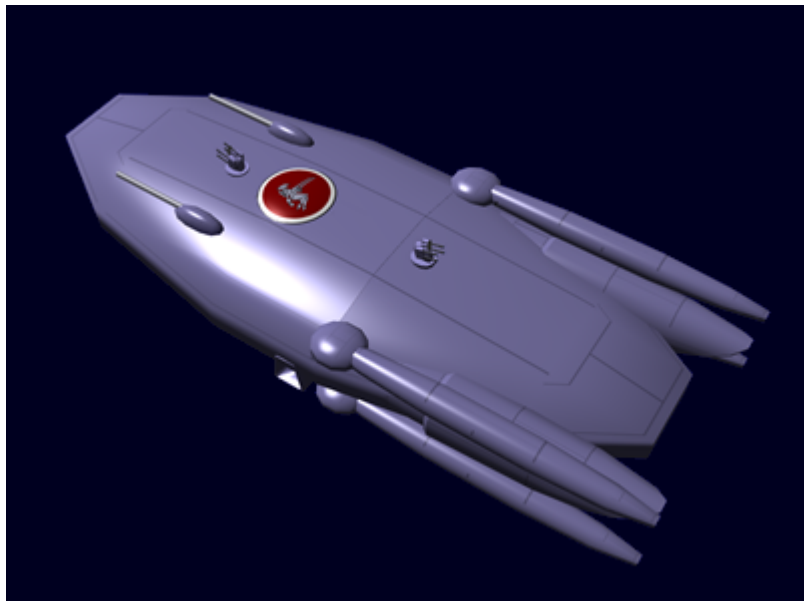
Landing Gear

The *Midori-Class* has four retracting landing gear for planetary landings. They retract into the sub-deck below deck 2. They are oriented one at the bow, one astern, and two amidships. The hull opens to allow the gear to be extended. Each of the landing gear retract into an isolated section of the sub-deck, meaning personnel can not gain access to the ship by climbing up the landing gear.

Passageways

The *Midori-Class* uses [Standard Passageways](#) for horizontal travel. Moving between the two decks is done via two access points located towards the rear.

Weapon Systems



The *Midori-Class* has the following weapon systems:

- 2 [Ke-D6-W3200 Positron Accelerator Cannons](#) Tier 11, Medium Anti-Starship
- 4 [Ke-Z1 Series Anti-Starship Torpedoes](#) tubes
 - 4 [Ke-Z1 Series Anti-Starship Torpedoes](#) per tube Tier 11, Medium Anti-Starship-5
- 4 [Ke-S3-W3102 Star Army Anti-Fighter Turret, Type 31](#) (Tier 9, Heavy Anti-Mecha) Point defense (Retractable) 2 Dorsal and 2 Ventral
- 1 [KFY Graviton Beam Projector](#) on the ship's ventral stern.

OOC Notes

Authored by [Nashoba](#) and approved by [Wes](#) on May 28, 2010 ¹⁾

2D artwork by James Lambly. 3D renders by Nashoba.

Star Army Logistics	
First Used	YE 32
Products & Items Database	
Product Categories	starships
Product Name	Midori-Class Scout Ship
Nomenclature	Ke-D6-1a
Manufacturer	Ketsurui Fleet Yards

¹⁾

<https://stararmy.com/roleplay-forum/index.php?threads/yamatai-midori-class-scout-ship.5362/>

Last
update: 2023/12/20 22:37 stararmy:starship_classes:midori-class_scout_ship https://wiki.stararmy.com/doku.php?id=stararmy:starship_classes:midori-class_scout_ship&rev=1700312062

From:
<https://wiki.stararmy.com/> - **STAR ARMY**

Permanent link:
https://wiki.stararmy.com/doku.php?id=stararmy:starship_classes:midori-class_scout_ship&rev=1700312062

Last update: **2023/12/20 22:37**

