

Kisaki-class Starbase

The Kisaki (*Empress*) Starbase is a mobile facility originally for use by the [Scientific Studies Service \(SSS\)](#) first manufactured in [YE 31](#).

About the Kisaki Starbase

The *Kisaki Starbase* is the result of a contractual agreement between the [Ketsurui Fleet Yards](#) and the [SSS](#). The *Kisaki Starbase* serves two purposes; they provide additional sites for the [SSS](#) to perform research and operations, and they provide forward bases where they may equip, refurbish and if necessary repair and service their [Tansaku-class](#) vessels.

Members of Class

This page contains the names and [registrations](#) of the *Kisaki-class Starbase*. It also identifies the owning organization and location.

Registration Number	Starbase Name	Status	Owning Organization	Location	Configuration	Mission
YK-C1-0001	YSS Tsuuken	Deployed	(Scientific Studies Service)	Yamatai Star System	2R-2RF	Research
YK-C1-0002	YSS Daigaku	Deployed	(Scientific Studies Service)	Saiki Cluster	2R-2T	Education
YK-C1-0003	YSS Sapurai	Deployed	(Scientific Studies Service)	Veronica	2R-2M	Supply & Staging
YK-C1-0004	YSS Furontia	Deployed	(Scientific Studies Service)	Hanako's Star	1R-1T-1M-1RF	KMS Support
YK-C1-0005	Kisaki - Epsilon	Deployed	(Scientific Studies Service)	Yamatai	2R-2RF	
YK-C1-0006	Kisaki - Zeta	Deployed	(Scientific Studies Service)	Yamatai	2R-1RF-1M	
NK-X1-0010	Hanako Star Station	Destroyed	First Expeditionary Fleet	Hanako's Star	Classified	Defense
NK-X2-003	Chikara Starbase	Deployed	Second Expeditionary Fleet	Daichi System	Classified	Production
	Wisteria Starbase		Star Army of Yamatai	Fujiko	Classified	Deployed
YK-C1-0007	YSS Kyōryoku	Deployed	(Scientific Studies Service)	Âmuarpoku (Clan Dream)	1R-1T-1M-1RF	Liaison

History

The *Kisaki Starbase* concept started in [YE 31](#), and arose out of necessity. As the [SSS](#) grew they found two reasons they needed a group of starbases.

First, being a research organization they needed facilities to conduct experiments. Originally they considered establishing a research facility near the [Primary Campus](#) at [Kyoto, Yamatai \(Planet\)](#). However, they soon realized that some of the research would be too hazardous to perform with a major population center nearby.

Second, their fleet of [Tansaku-class](#) vessels had to travel significant distances to reach many of the sites that the [SSS](#) wanted to explore and establish expeditions. It was impractical to require the ships to always return to [Yamatai](#) for expedition staging, and refurbishment.

It was from these situations that they contacted the [Ketsurui Fleet Yards](#) and initiated discussions to build a group of starbases that would take care of these needs.

During the latter stages of development, the [Star Army of Yamatai](#) expressed interest in acquiring some *Kisaki Starbases* for their own use.

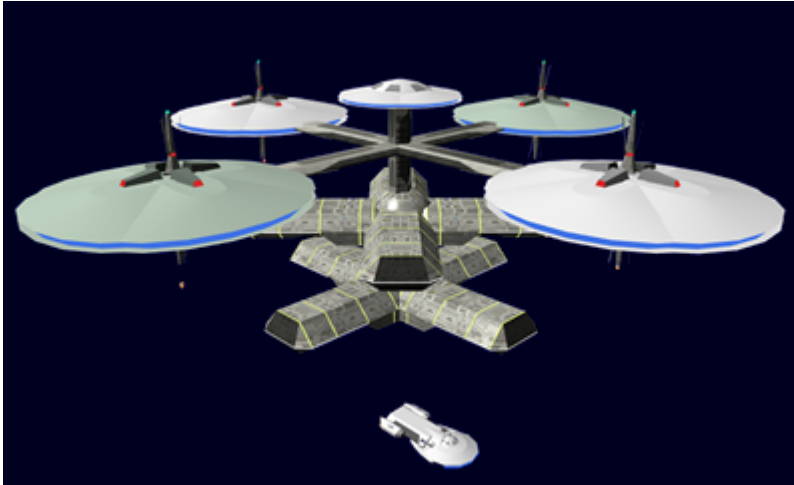
Note: A *Kisaki Starbase* with the [Ke-H4-M3101e - Military](#) module counts as a Capital ship for build up purposes.

In [YE 34](#) all civilian *Kisaki Starbases* were retrofitted with [SYNC](#) for network communications.

In [YE 36](#) all civilian *Kisaki Starbases* were retrofitted with [Ge-X3300 - Type 33 Escape Pod](#) replacing the previous two models in use.

Appearance

The *Kisaki Starbase* consists of four major levels. At the top is the [Command Module](#) which sits on the vertical shaft. Largest level is where the four [Habitat Modules](#) are connected to the vertical shaft by two bisecting horizontal shafts. The lower two levels are two sets of four [Ship Bays](#) which allows a *Kisaki Starbase* to service eight ships at a time.



Statistical Data

General

- Organizations Using This Star Base: [Scientific Studies Service \(SSS\)](#), [Star Army of Yamatai](#)
- Class: Kisaki-class Starbase
- Nomenclature: Ke-H4-1a
- Type: Starbase
- Designers: [Ketsurui Fleet Yards](#), [Ketsurui Zaibatsu](#), [Y-SSS](#), [Takumi](#)
- Manufacturer: [Ketsurui Fleet Yards](#)
- Estimated value: 38,400,000 [KS](#)

Crew and Accommodations

- Crew: 450
- Passengers: 4,800 typically but varies depending on modules
- Maximum Capacity: 10,050 with four residential modules
- Emergency Capacity: 20,000 people can fit aboard in an emergency, but the starbase would be extremely cramped.

Dimensions

Overall

- Length: 1,717 meters (5,631.75 feet)
- Width: 1,717 meters (5,631.75 feet)
- Height: 613 meters (2,010.64 feet)

Command Module

- Length: 306.7 meters (1,003.7 feet)
- Width: 306.7 meters (1,003.7 feet)
- Height: 30.6 meters (100.3 feet)
- Decks: 7 (4 meters each)

Habitat Modules

- Length: 490 meters (1,607.2 feet)
- Width: 490 meters (1,607.2 feet)
- Height: 122 meters (400.16 feet)
- Decks: 30 (4 meters each)

Ship Bays

- Length: 492 meters (1,613.76 feet)
- Width: 184 meters (603.52 feet)
- Height: 92 meters (301.76 feet)
- Decks: 23 (4 meters each)

Horizontal Strut

- Length: 736 meters (2,414 feet)
- Width:* 122 meters (400 feet)
- Height: 30 meters (98 feet)
- Decks: 3 (8 meters each)

Vertical Strut

- Length: 61.3 meters (201 feet)
- Width: 61.3 meters (201 feet)
- Height: 490 meters (1,607.2 feet)
- Decks: 62 (8 meters each)

Propulsion and Range

Speeds

The *Kisaki Starbase* has limited mobility.

- Atmospheric: None
- [Combined Field System/Continuum Distortion Drive](#):
 - Minimum: Resting motionless
 - Cruising Speed: 2,922c (~8 ly/d)
 - Maximum Speed: 3,652.5c (10 ly/d)
- Hyperspace Drive: 262,980c (0.50 ly/m)

Note: The *Kisaki Starbase* can not enter an atmosphere; the stresses would destroy it. However, the [Habitat Modules](#) can serve as lifeboats and are capable of making an emergency water landing.

Durability and Maintenance

Service Lifespan: Estimated 20 years of constant use, possibly longer with refits.

Refit Cycle: Frequent minor updates through the [PANTHEON](#) system and a refit once every four to five years.

Damage Capacity

See [Damage Rating \(Version 3\)](#) for an explanation of the damage system.

Hull: 30 (Per module) Shields: 30 (Threshold 2)

Inside the Kisaki Starbase

The *Kisaki Starbase* contains the following sections and each is listed in detail.

Command Module

This is the overall command and control for the *Kisaki Starbase*. It is located at the top of the vertical shaft. This module has no propulsion other than maneuvering thrusters.

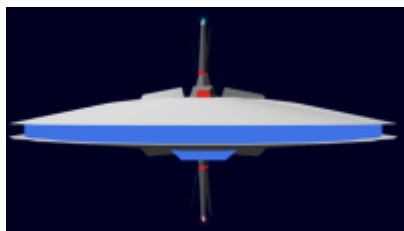


View details on the [Command Module](#).

Habitat Modules (4)

The Habitat Modules of the *Kisaki Starbase* are mission configurable. The normal configuration is two of

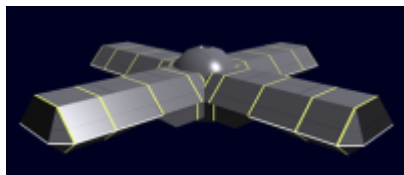
the modules dedicated to the support of the crew. The other two are usually configured for specific missions.



View details on the [Habitat Modules](#).

Ship Bay(8)

The *Kisaki Starbase* Ship bays are large enough to house a [Tansaku-class Science Vessel](#), or even [Plumeria-class \(2D\) Medium Gunship](#). They are arranged in two groups of four.



View details on the [Ship Bays](#).

Horizontal Struts (2)

These are the structural connections that connect the [Habitat Modules](#) to the vertical strut.



View details on the [Horizontal Struts](#).

Vertical Strut

This is the structure that connects the [Command Module](#) to the Horizontal Struts and the Ship Bay modules.

View details on the [Vertical Strut](#).

Starbase Systems

Transit System

The *Kisaki Starbase* features a monorail transit system for transporting personnel and small goods between the various modules.



View details on the [Transit Station](#).

Related information

- [ships_of_class](#)

OOC Notes

Authored by [Nashoba](#) and approved by [Wes](#) on May 31, 2009¹⁾

Products & Items Database	
Product Categories	space stations
Product Name	Kisaki Starbase
Year Released	YE 31

¹⁾

<https://starmy.com/roleplay-forum/index.php?threads/yamatai-kisaki-class-starbase.4144/>

From:
<https://wiki.starmy.com/> - **STAR ARMY**

Permanent link:
https://wiki.starmy.com/doku.php?id=starmy:starship_classes:kisaki&rev=1710076361

Last update: **2024/03/10 06:12**

