

Heitan-class Carrier

The *Heitan*-class is a multi-role fightercraft carrier created by [Ketsurui Fleet Yards](#) for the [Star Army of Yamatai](#) that became available in [YE 31](#).

About the Heitan-class

The *Heitan*-class is designed to provide a formidable fighter presence in combat areas. The carriers are not intended to directly engage enemy capital vessels. They are equipped with weapons to protect them from enemy missiles, fighters, and other small craft. They are typically part of a battle-group and depend on the vessels in that group for protection from enemy warships.

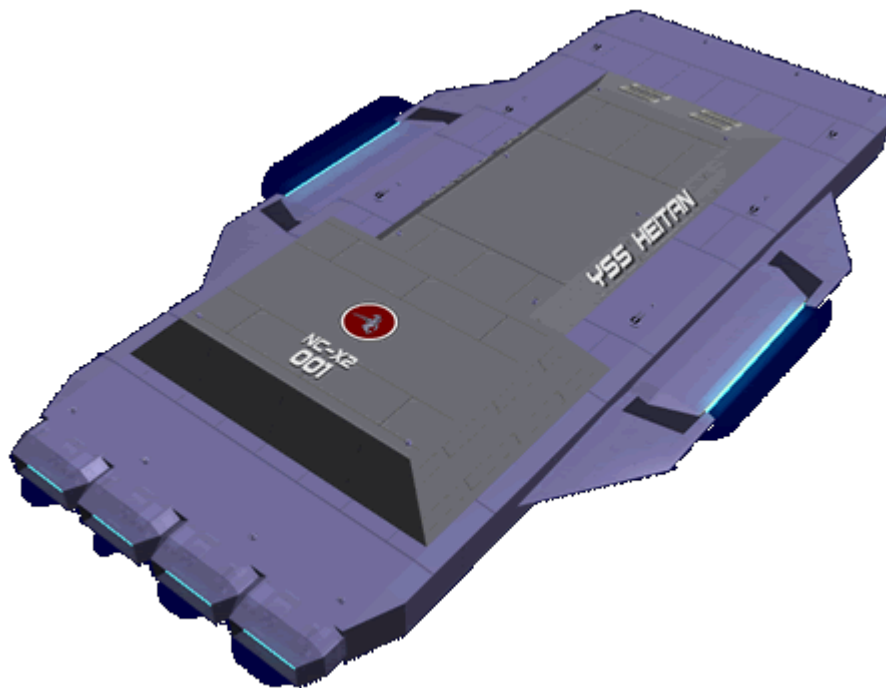
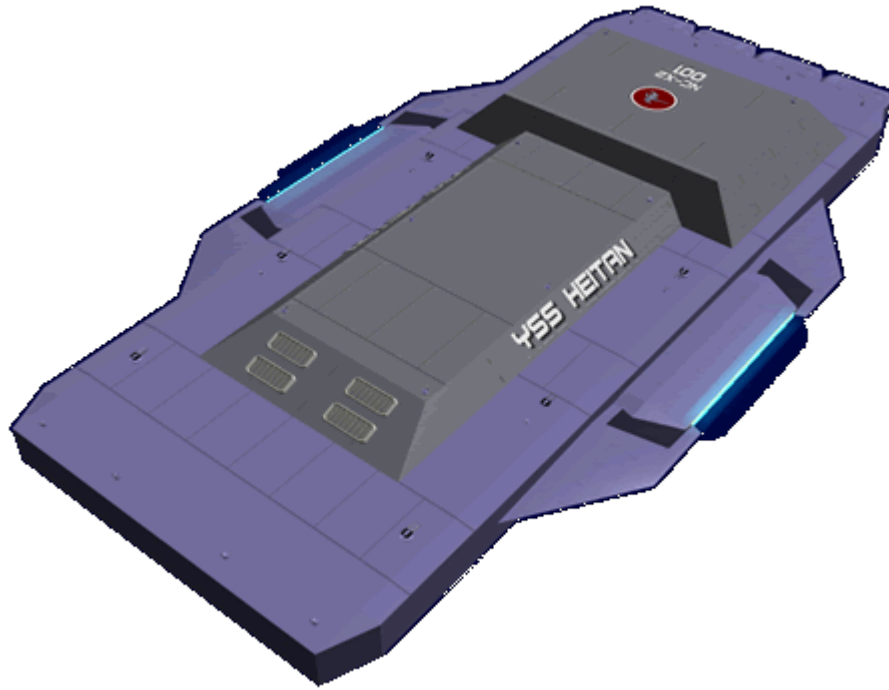
History

During the early days of the [Second Mishhuvurthyar War](#) it became clear that the [NMX](#) were depending heavily on small attack craft during their engagements. This prompted [Mikasa Sorano-Taisho](#) to put in a design request for a fighter carrier to counter this threat.

Design work began late in [YE 31](#), with the first ship of the line entering service before [YE 31](#) ended.

Appearance

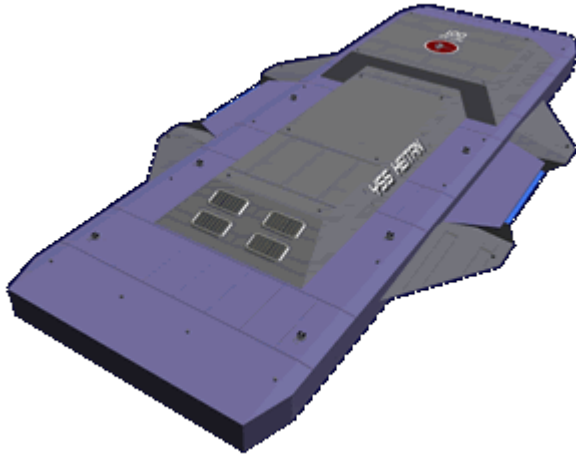
The *Heitan* basic appearance not only gave rise to its name *Heitan* meaning flat, but was intended to offer the smallest profile to the enemy. Attached to the main section are the hangar modules mounted above and below. The ship's hull is two-toned, with some parts a dark gray while other parts are the standard blue-gray. As with all modern Star Army vessels, it is marked with a [Star Army Hinomaru](#) on its dorsal surface.



Statistical Data

General

- Class: Heitan-class
- Nomenclature: Ke-A1-1a
- Type: Carrier
- Designers: [Ketsurui Fleet Yards, Takumi](#)
- Manufacturer: [Ketsurui Fleet Yards](#)
- Organizations using this ship: [Star Army of Yamatai](#)



Crew and Accommodations

- Crew: 1000
- Pilots: 200
- Maximum Capacity: There are accommodations for 1,400 personnel
- Emergency Capacity: 4,000 people can fit aboard in an emergency using some of the hangar space.

Dimensions

- Length: 990 meters (3,247.2 feet)
- Width: 480 meters (1,574.4 feet)
- Height: 120 meters (393.6 feet)
- Decks: 30 (4 meters each)

Propulsion and Range

Speeds

The *Heitan-Class* has typical warship speeds.

- Sublight Engines: .375 .375c (~112,422 kilometers per second) (~69,856 miles per second)
 - Acceleration: .01 c/sec 0 to max in 37.5 seconds
- [Combined Field System/Continuum Distortion Drive](#):
 - Minimum: Resting motionless
 - Cruising Speed: 15,000c (~1.71 ly/h)
 - Maximum Speed: 18,750c (~2.14 ly/h)
- Hyperspace Drive: 394,470c (0.75 ly/m)

This ship is equipped with [Anti-FTL field](#) countermeasures.

Durability and Maintenance

Service Lifespan: Estimated 20 years of constant use, possibly longer with refits.

Refit Cycle: Frequent minor updates through the [PANTHEON](#) system and a refit once every four to five years.

Damage Capacity

See [Damage Rating \(Version 3\)](#) for an explanation of the damage system.

Hull: 40 Shields: 40 (Threshold 4)

Inside the Heitan-class Carrier



Compartment Layouts

Conduits and Passageways

- [Standard Star Army Airlock](#)

- [Standard Star Army Maintenance Conduits](#)
- [Standard Passageways](#)
- [Standard Star Army Zero-Gravity Passageways](#)

Control Centers

- [Standard Medium Starship Bridge](#) (8 stations + captain, two level)
- [Flag Bridge](#)
- [Primary Flight Control](#)

Living and Dining Areas

- [Standard Star Army Crew Cabin \(Enlisted\)](#)
- [Standard Star Army Crew Cabin \(officers\)](#)
- [Star Army Standard Captain's Suite](#)
- [Standard Star Army Crew Lounge](#)
- [Standard Star Army Crew Baths](#)
- [Standard Star Army Crew Shower](#)
- [Standard Star Army Toilet](#)
- [Standard Star Army Dining Hall](#)
- [Standard Star Army Galley](#)
- [Standard Star Army Laundry Room](#)
- [Traditional Nekoalkyrja Nests](#)
- [Standard Star Army Wardroom](#)

Science and Medical Areas

- [Sakura-type Medical Laboratory](#)
 - [Autonomous Medical Treatment Center](#) used during emergencies to handle overflow

Storage and Maintenance Areas

- [Standard Star Army Cargo Area](#)
- [Standard Damage Control Station](#)
- [Standard Star Army Armory](#)
- [Standard Star Army Magazine](#)

Systems Rooms

- [Standard Computer Room](#)
- [Standard Star Army Engineering Bay](#)
- [Standard Star Army Fabrication Area](#)
- [Hyperspace Field Boosters](#)

Morale related

- [Star Army Ship's Store](#)
- [Standard Star Army Post Office](#)

Unique Compartments

The following compartments are unique to the *Heitan*.

Flag Bridge

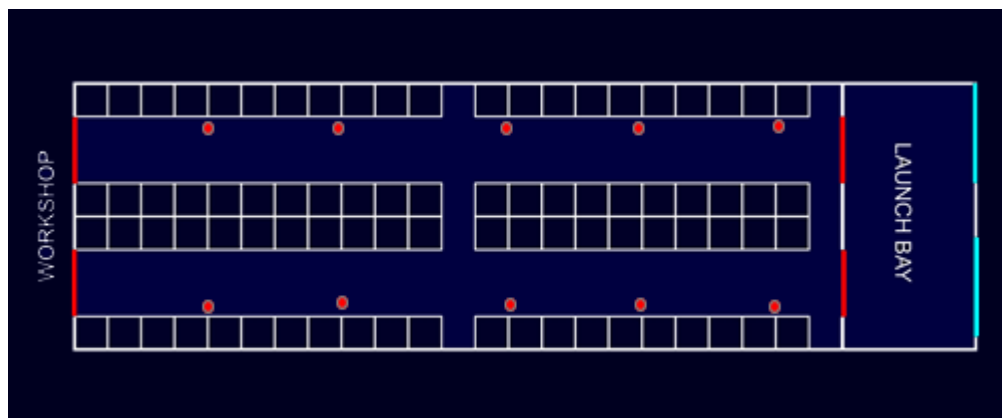
The *Heitan* has a second [Standard Medium Starship bridge](#). It is for use by an embarked Admiral and their staff. It is located beneath the bridge.

Hangar Deck

The *Heitan* has three separate hangar decks.

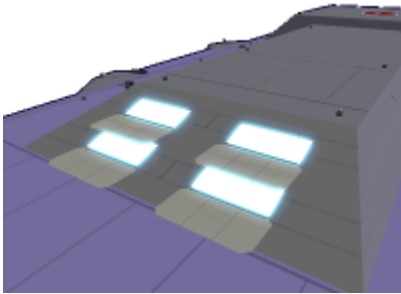
Alpha and Beta

Alpha and Beta are identical in size and configuration and are for fighters. They are located on the upper portion of the ship. Alpha and Beta deck are 440 meters long, 160 meters wide and 13 meters high with 2 meters of maintenance area beneath each. Forward of each hangar is the launch/recovery bay and aft of it is the workshop. Each hangar has 84 berths which means each can hold seven [squadrons](#) of fighters.



Launch/Recovery Bay

At the forward end of each hangar deck is the launch/recovery bay. Each bay has a containment force field on the entrance as well as an armored door. A [Durandium Alloy](#) blast shield protects the interior of the hangar from the engine exhaust. Alpha and Beta hangar decks have two bays. Each bay can launch four fighters arranged two side by side. Each bay also has several [KFY Graviton Beam Projectors](#) to assist damaged craft with recovery.



Berth

Each fighter craft assigned to the *Heitan* has a specific berth location in the hangar decks. This is where the craft are checked, and prepared for their mission. Each has diagnostic interfaces and a standard [Star Army Tool Locker](#). Each berth is typically 20m x 20m but the space can be reconfigured to accommodate larger craft should it be necessary. Every fourth berth has a [Firefighting Version](#) of the [tool locker](#). These are indicated on the hangar layout by red circles.

Pallet

Craft on the hangar deck are placed on pallets which are used to move them from their pit location, to the workshop, or the launch/recovery bay. Each pallet is hexagonal and has configurable clamps that secure the craft to the pallet.

Gamma

Gamma is as large as the other two combined and is intended for special equipment. Gamma deck is 440 meters long, 160 meters wide and 28 meters high with 2 meters of maintenance area beneath it. It has a single large launch recovery area.



Workshops

Aft of each hangar deck is the workshop. This is where craft that have sustained structural damage are taken for repair or cannibalization. Between the ship's fabrication and the workshop, a Heitan can manufacture replacement fighters if necessary.

Hyperspace Field Boosters

The *Heitan* has a pair of hyperspace fold emitters which allow the carrier to produce a fold bubble large enough to encompass the entire compliment of fighters and jump with them deployed. They are located on the sides of the carrier.

The Boosters allow the *Heitan* to generate a hyperspace bubble of one kilometer in radius.

Primary Flight Control

This is where all launch and recovery activities are controlled on the *Heitan*. The room has several [Volumetric Display](#) displays that show the status of each Launch and Recovery bay. They also display the position of all the craft around the carrier.

Weapon placements

Type 31 Secondary Anti-Starship Turret

- Mounted laterally along the sides, three to each side on the top and another three mirroring the top placements.

Point Defense Turrets

- Eight on the top and bottom of the bow, and eight on the top and bottom of the stern.
- Four on the top corners of the upper and lower pyramid.
- Six on top of the Alpha hangar
- Six on the bottom of the Gamma hangar
- Twelve laterally at the side paralleling the hangars

Anti-Armor Missile Launchers (retractable)

- Seven mounted on the 'wings' protecting the Hyperspace Booster assembly.

Star Army Weapons Pods

- Launched out of the aft of the lower pyramid

Ship Systems

This section contains the unique system information for the *Heitan*.

Armored Hull

The *Heitan* has a one meter thick hull of [Yamataium](#). The frame of the ship is [Durandium Alloy](#). All windows on the *Heitan* are made of [Transparent Durandium](#).

Computer and Sensor Systems

The *Heitan* uses a [KAMI](#) for command and control of shipboard systems and is equipped with a [Psionic Signal Controller](#).

Blast Shutters

On the *Heitan* [Forcefield-Nested Isolation Doors](#) are used instead of older style shutters.

Propulsion

The *Heitan* uses four [Ketsurui Fleet Yards Turbo Aether Plasma Drive](#) drives for propulsion at sub-light speeds.

The *Heitan* uses a [Ketsurui Fleet Yards Combined Field System](#) for FTL propulsion

The *Heitan* has two [Ketsurui Fleet Yards Hyperspace Fold Engines](#). One is sufficient to allow the carrier to travel. However for certain combat situations, the *Heitan* uses both of them to create an extended hyperspace bubble to allow it to deploy its compliment of fighters, take them into hyperspace for rapid engagement of the enemy when they drop out.

Weapons Systems

The *Heitan* is primarily focused toward defending the ship.

- 12 [Ke-S3-W3101 Type 31 Secondary Anti-Starship Turret](#) Tier 11, Medium Anti-Starship

- 48 [Point Defense Turrets](#) Tier 9, Heavy Anti-Mecha
- 28 [Anti-Armor Missile Launchers](#) (retractable)
- 100 [Star Army Weapons Pods](#)

Vehicle Complement

Gamma Hangar

The number and type of craft carried in Gamma Hangar depends on the mission.

- 6 [Ke-T7 "Raccoon" Transport Shuttle](#)
- 12 [Ke-T8 "Kuma" Multi-role Shuttle](#)
- [Ke-V7 "Ginga" Bomber](#)

Alpha and Beta Hangar

The *Heitan* carries fourteen [Fighter Squadrons](#). Fighters that currently can be used are:

- [Ke-V6-1D "Hayabusa" Starfighter](#)
- [Ke-V5 "Tora" Torpedo Bomber](#)
- [Ke-V8 "Kawarime" Fighter](#)
- [Ke-V8 "Teisatsu" Fighter](#)

Non-technical data

Tactics

Strike Mission

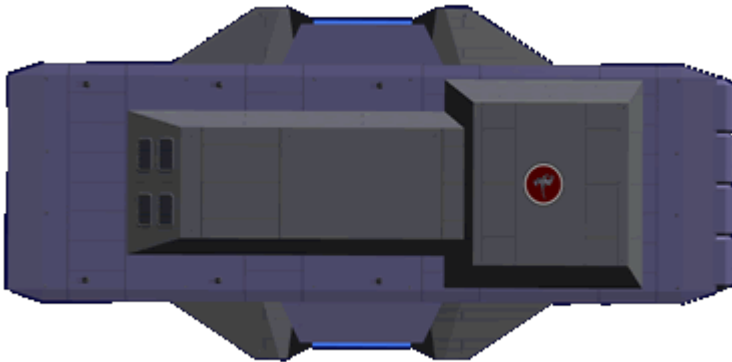
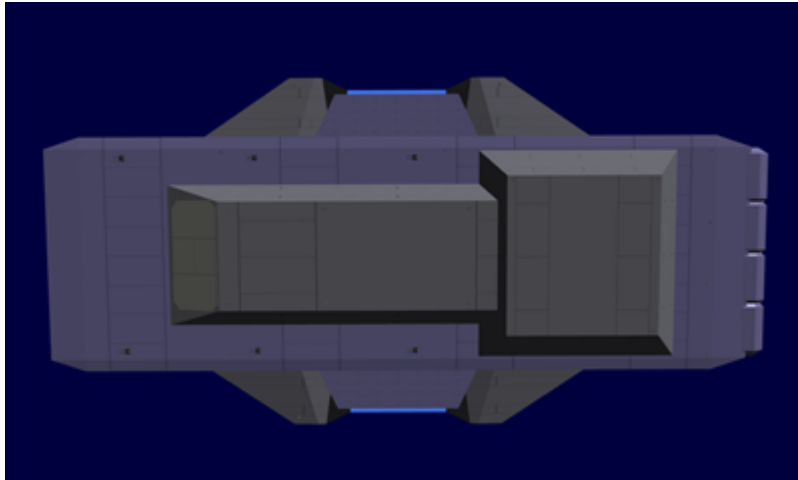
The carrier gets to within range of its objective. It then launches [Ke-V7 "Ginga" Bombers](#) and fighter escorts. Two [Bombers](#) are paired with a [Squadron](#). The [Ke-V7 "Ginga" Bomber](#) then uses their hyperspace fold system to take 6 fighters as escort. Once they return to normal space the bombers make for the objective while the fighters provide cover for them.

Assault Mission

The carrier launches its contingent of [Fighter Squadrons](#) and whatever other craft are deemed appropriate. Two of them are designated as CAP to defend the carrier when it arrives. It then jumps into

hyperspace using the field boosters taking all of the launched craft with it. When it arrives the fighters are already launched and can immediately engage the enemy.

Images



OOC Notes

Authored by [Nashoba](#) and approved by [Wes](#) on Dec 19, 2009 ¹⁾

Products & Items Database	
Product Categories	starships
Product Name	Heitan-class
Nomenclature	Ke-A1-1a
Manufacturer	Ketsurui Fleet Yards
Year Released	YE 31

¹⁾

<https://stararmy.com/roleplay-forum/index.php?threads/saoy-heitan-class-carrier.4715/>

Last
update: 2023/12/20 22:35 stararmy:starship_classes:heitan_class https://wiki.stararmy.com/doku.php?id=stararmy:starship_classes:heitan_class&rev=1700312063

From:
<https://wiki.stararmy.com/> - **STAR ARMY**

Permanent link:
https://wiki.stararmy.com/doku.php?id=stararmy:starship_classes:heitan_class&rev=1700312063

Last update: **2023/12/20 22:35**

