

Ke-H5-W3200 "Kyouheki" Defense Platforms

The Kyouheki ([🌐 Parapet](#)) Defense Platforms are part of the *Ke-H5-1a "Guriddo" Defense System*, and came into service in [YE 32](#). This component of the Defense System received an upgrade in the form of the [Ke-H5-W4200 "Kyouheki" Defense Platforms](#) in [YE 42](#)



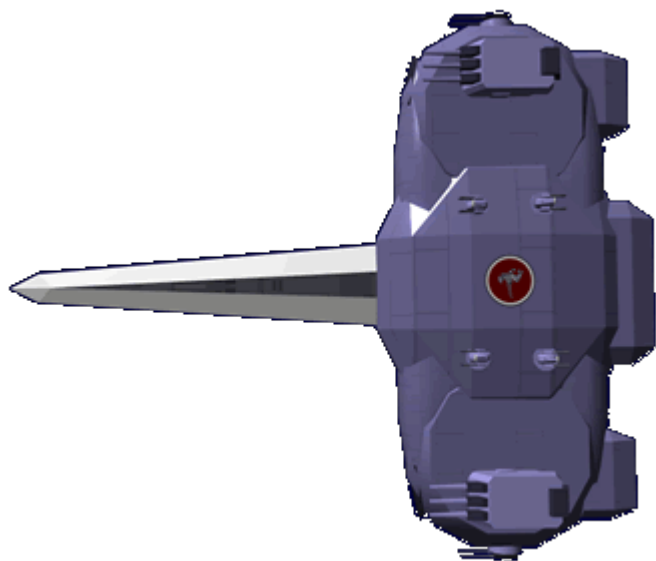
About the Kyouheki Defense Platforms

The Kyouheki Defense Platforms primary purpose is to maintain and control the [Ke-H5-W3201 "Suzumebachi" Attack Drones](#). The secondary purpose is to provide tactical information and additional firepower in defense of the system.

History

The *Kyouheki Defense Platforms* were designed to be the last line of defense for a star system. Positioned to literally draw a line and make any enemy pay dearly for attempting to cross it. During the development phase [Ketsurui Fleet Yards](#) tried making one with two of the [Ke-S3-W3020 Main Weapon Arrays](#), but the resulting forces when firing both simultaneously tore the prototype apart. For that reason they went with a single and added four [Type 31 Heavy Anti-Starship Turrets](#) to maximize the firepower. Typically they are positioned so that they can work together with other platforms to catch enemy vessels in a crossfire.

Appearance



The *Kyouheki Defense Platforms* are in the traditional [Star Army of Yamatai](#) blue, with the [Star Army Hinomaru](#) emblazoned on the top. Prominently visible in the front is the distinctive [Ke-S3-W3020 Main Weapon Array](#) made famous by the [Plumeria-class \(2D\) Medium Gunship](#). The *Kyouheki* is a squat and bulky craft at first glance. It is not made for maneuvering but to deliver the most firepower available.

Statistical Data

The *Kyouheki Defense Platforms* are produced to the following specifications:

General

- **Class:** Kyouheki
- **Nomenclature:** Ke-H5-W3200
- **Type:** Defense Platform
- **Designers:** [Ketsurui Fleet Yards](#), [Takumi](#)
- **Manufacturer:** [Ketsurui Fleet Yards](#)
- **Organizations using this ship:** [Star Army of Yamatai](#)

Dimensions

- **Length:** 200 meters (656 feet)
- **Width:** 169.18 meters (554.91 feet)
- **Height:** 38.45 meters (126.11 feet)

- **Decks:** 9 (4 meters)

Crew and Accommodations

- **Crew:** Seven operators are recommended, but only one is required.
- **Maximum Capacity:** There are accommodations for thirty crew members.

Propulsion and Range

Speeds

The *Kyouheki* is not a fast vessel.

- Sublight Engines: .2c (~59,958 kilometers per second) (~37,256 miles per second)
- Hyperspace Drive: 262,980c (0.50 ly/m) Used for delivery.

Damage Capacity

See [Damage Rating \(Version 3\)](#) for an explanation of the damage system.

- Hull: 20
- Shields: 20 (Threshold 2)

Inside the Kyouheki Platform



Conduits and Passageways

- [Standard Star Army Airlock](#)
- [Standard Star Army Maintenance Conduits](#)
- [Standard Star Army Zero-Gravity Passageways](#)

Control Centers

- [Traditional Small Starship Bridge](#) (6 stations + captain)

Living and Dining Areas

- [4 Standard Star Army Crew Cabin \(officers\)](#)
- [13 Standard Star Army Crew Cabin \(Enlisted\)](#)
- [Standard Star Army Crew Lounge](#)
- [Standard Star Army Crew Baths](#)
- [Standard Star Army Crew Shower](#)
- [Standard Star Army Toilet](#)
- [Standard Star Army Dining Hall](#)
- [Standard Star Army Galley](#)
- [Standard Star Army Laundry Room](#)

Science and Medical Areas

- [Sakura-type Medical Laboratory](#)

Storage and Maintenance Areas

- [Standard Star Army Cargo Area](#)
- [Standard Damage Control Station](#)
- [Standard Star Army Armory](#)
- [Standard Star Army Magazine](#)
- [Standard Star Army Shuttle Bay](#)

Drone Bay

Located in the rear of the Kyouheki Platform, the drone bay shares the same entrance as the shuttle bay. This is where the [Ke-H5-W3201 "Suzumebachi" Attack Drones](#) are brought aboard for maintenance and reloading.



Systems Rooms

- [Standard Computer Room](#)
- [Standard Star Army Engineering Bay](#)
- [Standard Star Army Fabrication Area](#)

Morale related

- [Star Army Ship's Store](#)

Kyouheki Platform Systems



Armored Hull

The *Kyouheki Platform* has an armored hull constructed on a [Durandium Alloy](#) frame, and covered in .5 meter plates of [Yamataium](#).

Computer and Sensors

The *Kyouheki Platform* uses a [MEGAMI](#) for avionics and computer control and is equipped with a [Psionic Signal Controller](#).

Electronic Counter Measures

The *Kyouheki Platform* is equipped with a [Type 31 Electronic Warfare Suite](#) to better enable it to combat the enemy.

Emergency Systems

The *Kyouheki Platform* has all the [Star Army Standard Starship Emergency Systems](#).

Escape Pods

The *Kyouheki Platform* has six [Star Army Escape Pod, Type 30s](#).

Life Support Systems

The *Kyouheki Platform* has [Star Army Standard Life Support Systems](#).

Power Generation

The *Kyouheki Platform* has a [Aether Generator](#) for its primary power. It uses a pair of fusion reactors for backup power.

Propulsion

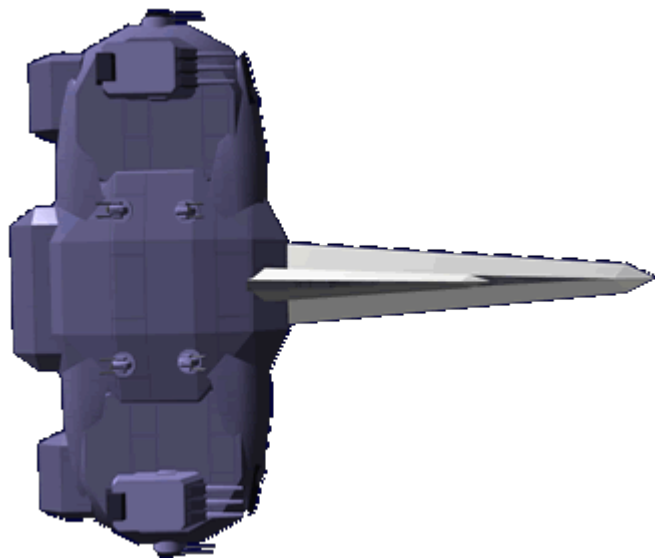
- The *Kyouheki Platform* uses four [Turbo Aether Plasma Drive](#) for its STL propulsion.
- It has a [Ketsurui Fleet Yards hyperspace fold drive](#) for delivering the station to destination systems. It is not recommended to be used during combat.

Soul Savior Pod


The *Kyouheki Platform* has a [Soul Savior Pod](#) for mental backups.

Shields

The *Kyouheki Platform* uses a [Combined Field System](#) for its protection.



Weapon Systems

- 1 [Ke-S3-W3020 Main Weapon Array](#) (Tiers 13 through 15, Light Anti-Capital Ship through Heavy Anti-Capital Ship ( **Fix Me!** : Staff needs to determine which))
- 4 [Type 31 Heavy Anti-Starship Turret](#) (Tier 12, Heavy Anti-Starship)
- 2 [Heavy Dual Anti-Starship Gun Turrets](#) (Tier 11, Medium Anti-Starship)
- 8 [Heavy Quad Anti-Mecha Cannons](#) Tier 9, Heavy Anti-Mecha)

From:

<https://wiki.stararmy.com/> - **STAR ARMY**

Permanent link:

https://wiki.stararmy.com/doku.php?id=stararmy:starship_classes:guriddo:kyouheki

Last update: **2024/02/20 11:15**

