

Ke-V9 "Nodachi" Assault Fighter

The *Nodachi* assault fighter is an advanced and heavily-armed endo/exo-atmospheric aerospace fighter-craft that was brought into military service by the [Star Army of Yamatai](#), late in the year [YE 33](#).



About the Nodachi-class

The *Nodachi* is fairly large for a fighter-craft and is close to the formidable [Ke-V7 "Ginga" Bomber](#) in its physical dimensions. It is designed to be deployable in all possible fields of engagement for a strike-craft – thus its standard equipment includes atmospheric, sub-light and faster-than-light drive systems by default. Though officially labeled as an *assault fighter* due to its ruggedness and firepower, the *Nodachi* can serve in the same variety of mission roles as the [Ke-V8 "Kawarime" Fighter](#). However, due to the fact the vehicle is a fairly recent design and because of its comparatively large production costs it will primarily be utilized for front-line combat and escort roles. The class designation 'Nodachi' is a Yamataian term for a variety of large two-handed sword.

History

The initial design was submitted to [Ketsurui Fleet Yards](#) by [Murasaki Emiko](#) in early [YE 33](#) during her initial Star Army training. After familiarizing herself with the Star Army's unique technologies and gaining access to the technical information on the military's starship systems as part of her military induction,

Emiko designed the *Nodachi* during her free time. Having noted the Star Armies lack of a heavy fighter-craft comparable to those of other star nations, Emiko set out to rectify this with a new strike-craft design. After the original submission was reviewed and given tentative approval, the designers at KFY spent several more months making refinements and improvements by incorporating several additional systems already under development, before finally putting the new model into production.

Appearance



The *Nodachi* has a singularly unique appearance amongst the Star Army's aerospace fighters. The front of the main fuselage bares a pair of [Ke-V9-W3300 Turbo Aether Cannons](#) beneath the nose and a [Ke-V9-E3303 Fighter Cockpit](#) with extendable access ladders on either side, negating the need for the use of a gantry ladder to board the craft. The rear of the main fuselage bares three [Ke-V9-P3300 Turbo Aether Plasma Drives](#), two quad-barrel [Ke-V9-W3301 Turbo Aether Turrets](#) and a pair of vertical stabilizers sprouting out from between the fighter's capacitors and [Ke-V9-G3300 Aether Reactor Module](#). Six wings extend out of the fuselage – two out of the aft section, each bearing flaps for atmospheric maneuvering. Attached to the middle of the fuselage on either side and extending out beyond the cockpit are the four

remaining knife-like wings. The smaller dorsal pair bare an additional set of [Aether Cannons](#) of the same type as present on the central fuselage. Located on each of the four main wings are the ships [Ke-V9-S3300 Combined Field System](#) arrays and another four quad-barrel [turrets](#). Present on the bottom of the craft are six [Ke-V9-W3304 Variable Equipment Mounts](#) for additional system modules or warheads, and three retractable landing gear.

Statistics and Performance

Performance data for the Ke-V9 is below:

General Information

Class: *Nodachi*-class Assault Fighter

[Nomenclature](#): Ke-V9-1a

Type: Starfighter

Designer: [Ketsurui Fleet Yards](#), [Murasaki Emiko](#)

Manufacturer: [Ketsurui Fleet Yards](#)

Fielded by: [Star Army of Yamatai](#)

Crew Accommodations

The fighter seats two individuals (though only one is required to operate). Generally, the front-seat pilot controls the [Ke-V9-W3300 Turbo Aether Cannons](#) and maneuvers the fighter while the back-seat pilot controls the [Ke-V9-W3301 Turbo Aether Turrets](#), sensors, missiles and other equipment. In order to fully utilize the ships systems a lone pilot must be a [NH-29](#), [Minkan](#) or [Nekovalkyrja](#), [Type 33](#) equipped with a [SPINE](#) interface working in tandem with the fighter's [Ke-V9-E3300 Compact Integrated Electronics System](#).

Dimensions

- Length: 25.06 meters (82.22 feet)
- Width: 15.58 meters (51.12 feet)
- Height: 4.85 meters (15.91 feet)
- Inertial Mass: 35.58 metric tonnes

Propulsion Performance and Range

Ke-V9-P3300 Turbo Aether Plasma Drives:

- Atmosphere:
 - Maximum Acceleration: 49.03 m/s^2 (5 G's or maximum speed in roughly 34 seconds)
 - Maximum Speed: 6,120 km/h (Mach 5 or 3,803 mph)
- Sub-light:
 - Maximum Acceleration: 5995.84 km/s^2 (Maximum speed in 18.75 seconds)
 - Maximum Speed: 112,422 km/s (69,860 mi/s or 0.375 c)

Ke-V9-P3302 Hyperspace Fold Drive:

- Micro-Jump / Intra-System Jump:
 - Charging Time: 5 seconds
 - Cooldown: 30 seconds
 - Maximum Range: 527 Astronomical Units (0.008333 Light Years)
 - Maximum Jump Duration: 1 second
- Macro-Jump / Inter-System Jump:
 - Charging Time: 5 seconds initial charge. +1 second per 1 LY up to maximum range.
 - Cooldown: 5 minutes
 - Maximum Speed: 262,980 c (0.5 ly/m)
 - Maximum Range: 20 Light Years
 - Maximum Jump Duration: 40 minutes

Durability and Maintenance

Damage Capacity (See [Damage Rating \(Version 3\)](#) for an explanation of the damage system):

- Structure: Tier 8 (Medium Mecha)
- Shields: Tier 8 (Medium Mecha, Barrier)

Service Lifespan: Approximately 20 years

Refit Cycle: As required

Systems

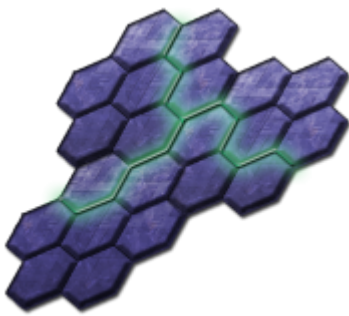
The Ke-V9 comprises the following systems:

Structural

The structure of the Ke-V9 varies by system:

Ke-V9-H3300 Yamataium Hull Construction

The hull and structural frame of the *Nodachi-class* is built utilizing the [Ke-V9-H3300 Yamataium Hull Construction](#) method. This means that the *Nodachi* is primarily composed of the dense and incredibly durable synthetic substance known as [Yamataium](#). So long as the hull is supplied with the requisite base elements from emergency internalized stores by nanites, the *Nodachi* is capable of limited self-regeneration of hull breaches over a period of days.



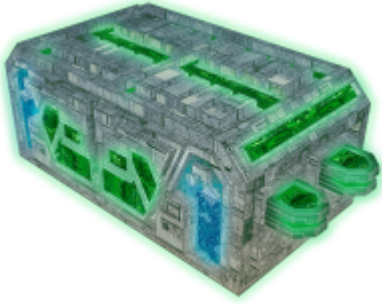
Ke-V9-E3303 Fighter Cockpit

Pilot's of the *Nodachi* utilize the [Ke-V9-E3303 Fighter Cockpit](#) in order to operate the craft. One can access the cockpit by extendable ladders on either side of the craft. The cockpit similarly features an external computer panel on either side which can be used to input a security code to open or close the cockpit. Technicians can use the computer panels to run software and hardware diagnostics in conjunction with an [Isolated Computer Pad](#) or similar device.

Main Computer

Ke-V9-E3300 Compact Integrated Electronics System

The *Nodachi* comes equipped with a variation of the [Compact Integrated Electronics System \(CIES\)](#) for its main computer hardware. The CIES has a full suite of sensors and communications devices, which are used as auxiliaries to the *Nodachi's* [Unified Sensor Array / Ansible](#). Whilst not truly sentient, the CIES is an intelligent, intuitive and powerful interactive computer that is fully capable of operating the *Nodachi's* full array of systems, defensive devices and weaponry independently in order to aid pilots.

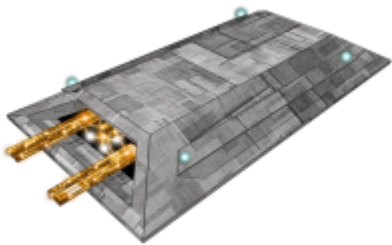


Communications / Sensors

The Ke-V9 is equipped with state-of-the-art communications and sensor packages:

Ke-V9-E3301 Unified Tactical Sensor Array / FTL Ansible

The *Nodachi* has a [Ke-V9-E3301 Unified Tactical Sensor Array / FTL Ansible](#) integrated into the main hull which expands upon the sensor and communication capabilities of the fighters [Ke-V9-E3300 Compact Integrated Electronics System](#).



Life Support

The Ke-V9 has systems to support pilots in extreme environments:

Ke-V9-V3300 Life Support System

The *Nodachi* is equipped with the [Ke-V9-V3300 Life Support System](#) which provides simulated gravity, a breathable atmosphere for the fighter's occupants, and provides protection against inertial forces during extreme acceleration.

Power

The Ke-V9 is powered by Aether.

Ke-V9-G3300 Aether Reactor Module

The *Nodachi* is equipped with the [Ke-V9-G3300 Aether Reactor Module](#) which provides primary power for the ships hardware and raw aether for its weapons and sub-light drive systems.

Propulsion

The Ke-V9 is outfitted with propulsion systems for sublight, maneuvering, and FTL travel:

Ke-V9-P3300 Turbo Aether Plasma Drives

The *Nodachi* has three integrated [Ke-V9-P3300 Turbo Aether Plasma Drives](#) for atmospheric and sub-light transit.

Ke-V9-P3301 Ion Maneuvering Thrusters

The *Nodachi* has [Ke-V9-P3301 Ion Maneuvering Thrusters](#) to provide yaw, pitch and roll control in space. They are located in the nose, the wings and fuselage.

Ke-V9-P3302 Hyperspace Fold Drive


The *Nodachi* has a [Ke-V9-P3302 Hyperspace Fold Drive](#) which provides [Hyperspace Travel](#) capability and allows the ship to cross interstellar distances in a matter of hours or minutes. The design of the Ke-V9-P3302 also includes upgrades that provide the capability for repeated micro-jumps within the gravitational influence of a star and adjacent planets without overload, effectively negating the need for the use of a [Continuum Distortion Drive](#) for long-distance, intra-system travel across multiple astronomical units of distance. However in order for a fold event to be successfully initiated, it must still be started outside the Hill Sphere of any nearby planetary bodies.

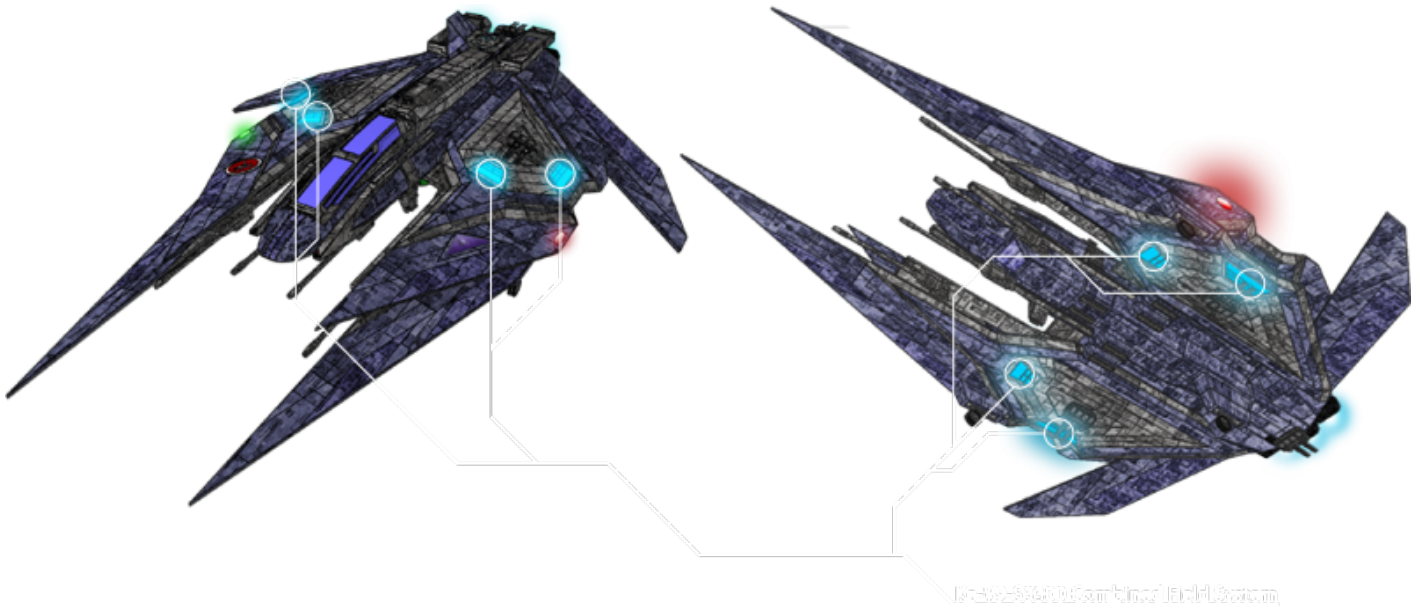
Defense

Multiple defensive systems provide exceptional survivability for the Ke-V9:

Ke-V9-S3300 Combined Field System

The *Nodachi's* variation of the [Combined Field System](#) utilizes eight arrays integrated into the port and

starboard wings. This system provides distortion shielding to protect the fighter from external sources of harm and negation of local gravitational influence upon the craft in order to perform  VTOL atmospheric maneuvers and inertia-less maneuvers in the vacuum of space.



Ke-V9-E3302 Conformal Psionic Signal Control Device

The *Nodachi* bares a variation of the [Psionic Signal Controller](#), a device commonly utilized upon [Star Army of Yamatai](#) vessels as a means of protection against external psionic and telepathic attack.

Ke-V9-W3302 Integrated Aether Flare Launcher

The *Nodachi* possesses a [Ke-V9-W3302 Integrated Aether Flare Launcher](#) sub-system upon the ships stern. The device is designed to defeat thermal targeting by enemy warheads by releasing an intense spray of [Aether](#) plasma bolts behind the craft to break a thermal lock on the fighter's engines.

Ke-V9-W3303 Integrated Anti-Radar Chaff Dispenser

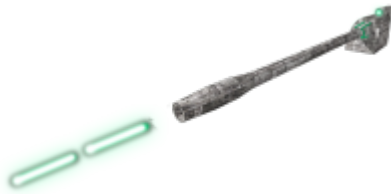
The *Nodachi* possesses a [Ke-V9-W3303 Integrated Anti-Radar Chaff Dispenser](#) sub-system upon the ships stern. This subsystem counters radar systems by releasing a cloud of radar reflective material and creating false positives on an enemies sensors. It is also effective on the tracking systems of many forms of warheads.

Weapons

The Ke-V9 is outfitted with a variety of weapon types, hardpoints, and combat support systems to accomplish its missions:

Ke-V9-W3300 Turbo Aether Cannons

The *Nodachi* comes equipped with four forward-facing [Ke-V9-W3300 Turbo Aether Cannon](#) (Tier 9, Heavy Anti-Mecha), generally operated by the front-seat pilot. These are essentially an extended range variant of the [Ke-V8-W3100 Turbo Aether Cannon](#) featured by the [Ke-V8 "Kawarime" Fighter](#).



Ke-V9-W3301 Turbo Aether Turrets

The *Nodachi* comes equipped with six quad-barreled [Ke-V9-W3301 Turbo Aether Turret](#) (Tier 6, Heavy Anti-Armor). These are also utilized for protection against enemy warheads, supplementing the *Nodachi's* defensive countermeasures. Generally these are operated by the [Ke-V9-E3300 Compact Integrated Electronics System](#) or the second-seat pilot.

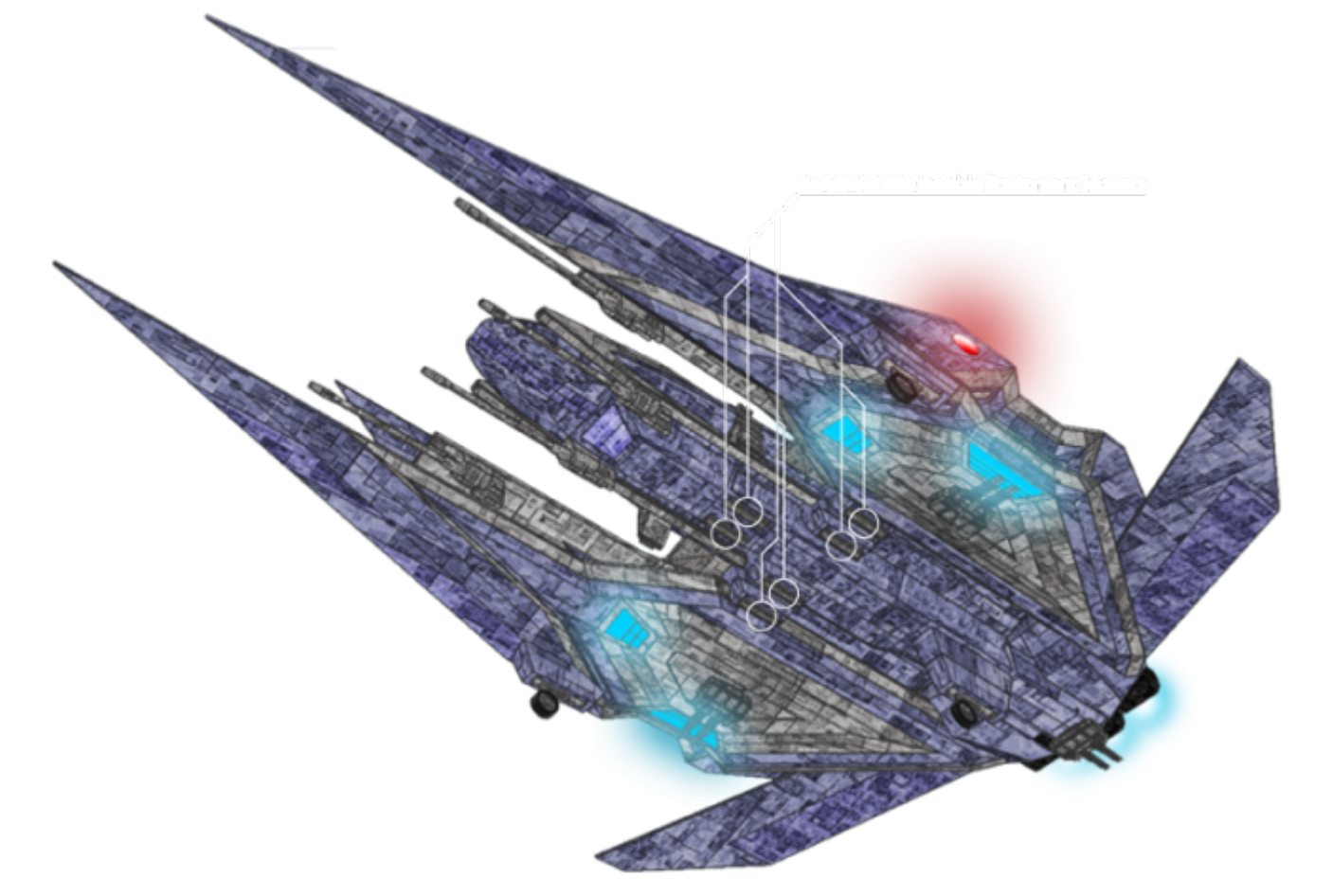


Ke-V9-W3304 Variable Equipment Mounts

The base of the *Nodachi* bares six mounts for warheads, weapon pods and other non-standard equipment for use in a variety of mission types.

One of any of the following devices can be installed on each of the equipment mounts:

- [Ke-Z1 Series Anti-Starship Torpedoes](#) Tier 11, Medium Anti-Starship varies by torpedo
- [Ke-T8-W3101 Mini-Missile Launcher Pod](#) Tier 4, Light Anti-Armor per missile
- [Ke-T8-W3103 Countermeasure Module](#)
- [Ke-V8-W3200 Targeting Module](#)
- [Ke-V8-W3201 Decoy Launcher](#)
- [Ke-V8-E3200 Wavefront Module](#)

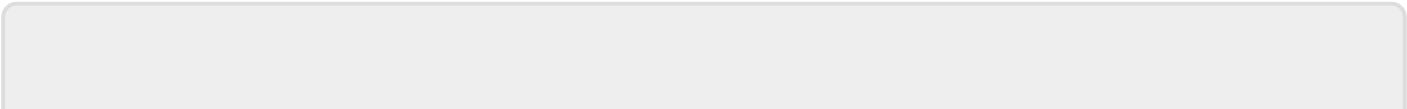


OO C Information

Created by [Khasidel](#). [Approval Thread](#)

[Yuuki](#) updated this article for [Damage Rating \(Version 3\)](#) on 2020/02/09 06:05. [Approval](#).

Star Army Logistics	
Supply Classification	Class B - SMALL CRAFT
First Used	YE 33
Products & Items Database	
Product Categories	small craft
Product Name	"Nodachi" Assault Fighter
Nomenclature	Ke-V9
Manufacturer	Ketsurui Fleet Yards



From:

<https://wiki.stararmy.com/> - **STAR ARMY**

Permanent link:

https://wiki.stararmy.com/doku.php?id=stararmy:small_craft:ke-v9_nodachi_assault_fighter

Last update: **2024/04/06 18:49**

