

# Ke-V6-1C "Hayabusa" Starfighter

Nicknamed *Hayabusa* (隼, “[Peregrine Falcon](#)”), the Ke-V6-1C is a small, sleek space interceptor used by the [Star Army of Yamatai](#) in both carrier-based and planet-based units. It entered service in the second half of [YE 31](#), during the [Second Mishhuvurthyar War](#) and was superseded by the [Ke-V6-1D "Hayabusa" Starfighter](#) in mid-[YE 32](#).




The V6-C model is distinguished from the earlier [V6-B](#) model by its short wingspan, additional (rear) turrets, and by large heavy cannons on its underside. The changes were made to give the fighter the ability to fight enemy pods in all directions, to allow more fighters to be stored per carrier, and to give it (minor) anti-starship capabilities like the [NMX Bomber Pod \(Type 31A\)](#). The [Turbo Aether Plasma Drive](#) engines also have improved acceleration (and glow teal rather than purple).

Produced in large numbers by [Ketsurui Fleet Yards](#), the Hayabusa became a common sight in Yamataian fleets, deployed on [Irim Gunships](#) and [Sharie-class Battleships](#) as well as serving in planetary garrisons around the Empire. Most V6 starfighters are painted in the standard Star Army light blue-gray color scheme or in [Multi-Net 3 Camouflage Pattern](#), although some aces and special persons have alternate color schemes. While the Hayabusa does not have a built-in hyperspace drive, its ring-shaped combined field system gives it speeds of up to 5,000c (~0.57 ly/h). It can be operated by one or two pilots; generally, the forward pilot controls the heavy cannons and maneuvers the fighter while the second pilot controls the turreted guns, sensors, and missiles.



## Stats

- 8 meters long; 3.75 meters tall; wingspan of 6 meters.
- Seats one or two [Nekovalkyrja, Type 33](#)
- FTL Speed: 5,000c (~0.57 ly/h)
- STL Speed: .4c (~119,916 kilometers per second)
- Shields: 20 SP (Threshold 4)
- Structure: 16 SP
- 2 Heavy Cannons: Tier 8 or Tier 9, Medium Anti-Mecha or Heavy Anti-Mecha (

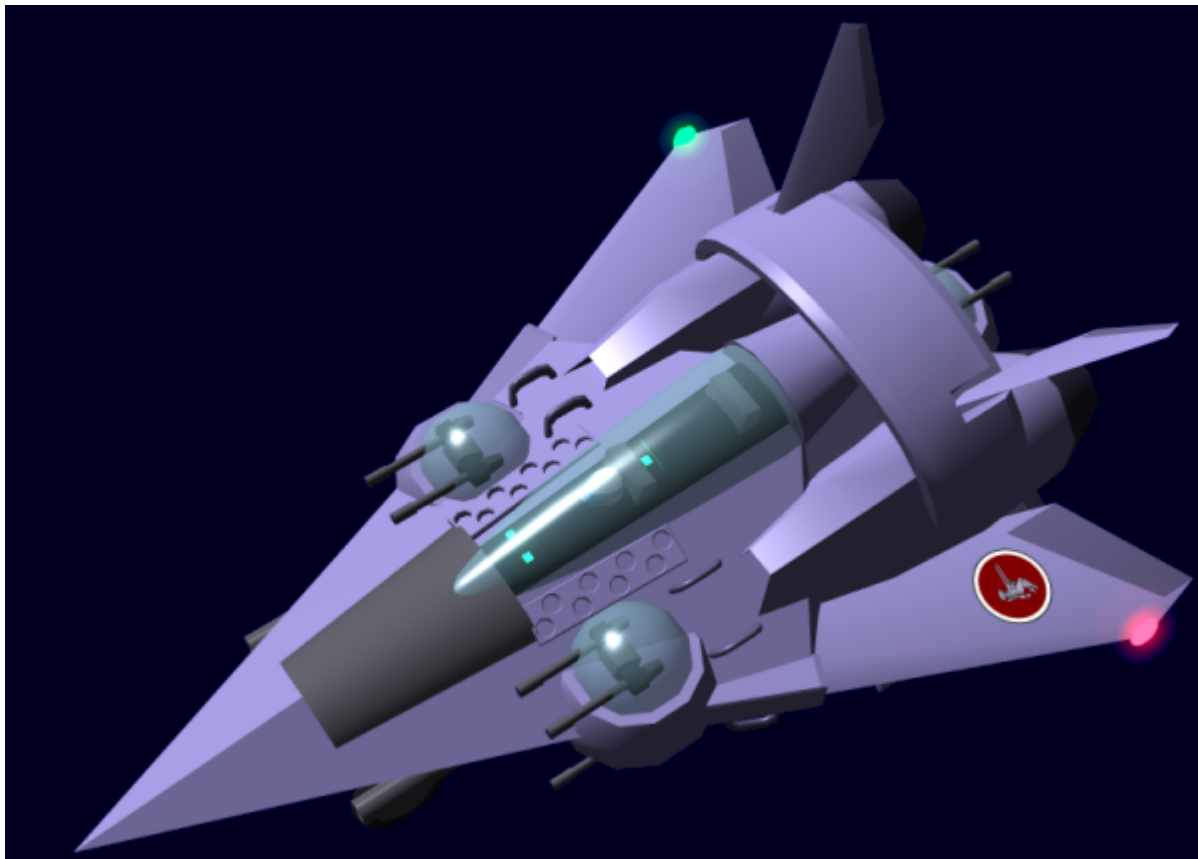
: Staff needs to determine which)



- 6 Double Turrets: Tier 5 or Tier 6, Medium Anti-Armor or Heavy Anti-Armor (Staff needs to determine which)
- Hardpoints (for missiles, etc): 1 under each wing, capable of mounting:
  - [Ke-Z1 Series Anti-Starship Torpedoes](#)
  - [Ke-Z2 Strategic Aether Bomb](#)
  - [Ke-T8-W3101 Mini-Missile Launcher Pod](#)
  - [Ke-T8-W3103 Countermeasure Module](#)

## Features

- [Durandium Alloy](#) body with [Yamataium](#) armor plates.
- High-powered engines
- Many small control thrusters
- [SPINE](#) system controlled
- Running lights
- Landing gear (only front landing gear is retractable)
- Wings and flaps for atmospheric use
- [Compact Integrated Electronics System \(CIES\)](#) computer and sensor package.
- Ejection seats
  - 1 [Type 31A and 31C Survival Kit](#) located under seats



## Variants

### V6-1C2

The V6-1C2 (“C2”) variant is essentially the same as the V6-1C, but its landing gear has been replaced with improved landing gear that absorbs shocks better and is completely retractable. The trade-off is the new smaller wheels make the C2 less able to taxi on rough terrain and the fighter is slightly more wobbly on the ground.



### Hayabusa SD

The Hayabusa SD (System Defense) is based on the V6-1C but is modified for system defense. It features smaller, retractable wheels (but not the shock absorbers of the C2) and lacks FTL capabilities. It is typically painted in [camouflage](#) and has darker tinted windshields. Most fighters of this model are built in the system they defend for use by the Star Army or local planetary defense forces. As such, they may have more variation than standard models.



From:  
<https://wiki.starmy.com/> - **STAR ARMY**

Permanent link:  
[https://wiki.starmy.com/doku.php?id=starmy:small\\_craft:ke-v6-1c\\_hayabusa\\_starfighter&rev=1696625401](https://wiki.starmy.com/doku.php?id=starmy:small_craft:ke-v6-1c_hayabusa_starfighter&rev=1696625401)

Last update: **2023/12/20 22:25**

