

# Dageki Strike Module

The [Ketsurui Fleet Yards](#), Ke-T7-B3100 Dageki, breaching module became available in [YE 31](#).

## About the Ke-T7-B3100

- Organization Using This item: [Star Army of Yamatai](#)
- Type: Troop deliver module
- Nomenclature: Ke-T7-B3100
- Designers: [Ketsurui Fleet Yards](#), [Ketsurui Zaibatsu](#) Research and Development teams, [Star Army Research Administration](#)
- Manufacturers: [Ketsurui Fleet Yards](#), [Star Army of Yamatai](#)
- Entered service: [YE 31](#)

## Statistics

- Length: About 6 meters (20.22 feet)
- Width: About 9 meters (30.33 feet)
- Height: Just over 3 meters (10.11 feet)
- Decks: 1

## Propulsion

Sublight Engines: Booster only

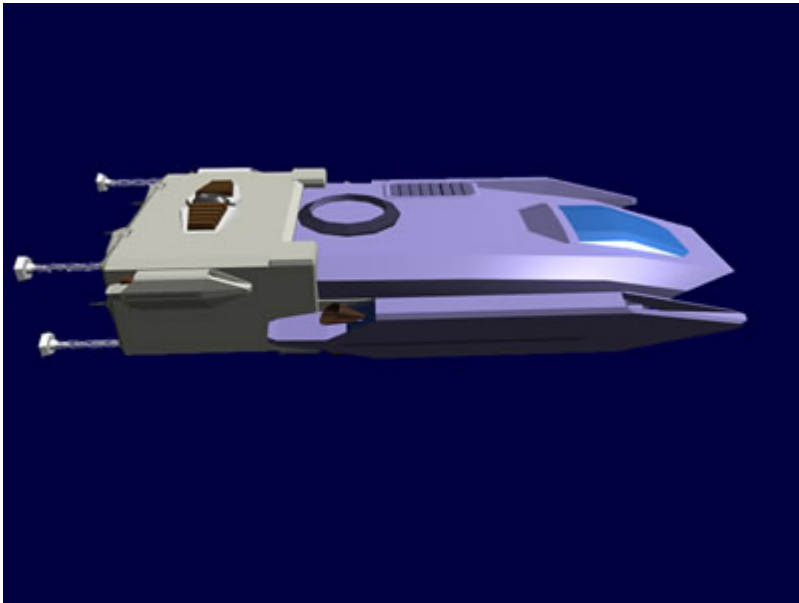
## Description

The Dageki is designed to couple with the [Ke-T7 "Raccoon" Transport Shuttle](#). It allows the Transport Shuttle to deliver troops to force entry target vessels. The [Raccoon](#) docks into the Dageki. Once [T7](#) is locked in onboard computer slaves the Dageki to the shuttle. Its large size allows troops to exit by using rear door of the [T7](#).

## Operation

The Dageki is brought up to the hull of the target vessel. It erects a force field as it activates the breaching blades. These devices slice into the hull and eventually slice out one or two chunks of the hull. A [KFY Graviton Beam Projector](#) then moves the section of hull out of the way. The Dageki then approaches to 1 meter and extends the securing legs. Once the legs are secured, it extends the Air Lock Tubes and opens the iris value to allow the troops to pass through the Dageki into the target vessel.

Image of a T7 shuttle with the Dageki module attached, and the securing legs deployed.

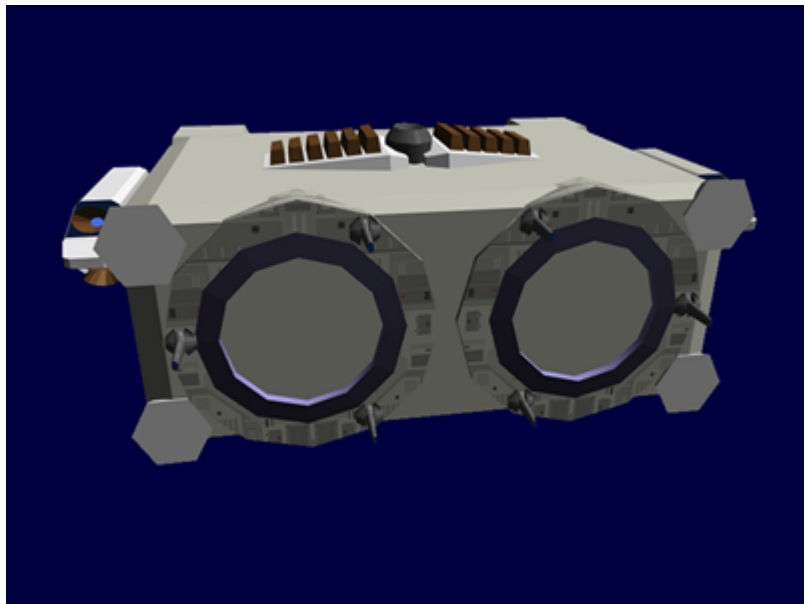


## Systems

### Standard equipment

- [Aether](#) Generator
- [Compact Integrated Electronics System \(CIES\)](#)
- [Durandium Alloy](#) unibody hull construction. DR 6.
- 2 [KFY Graviton Beam Projectors](#)
- [Star Army Standard Life Support Systems](#)

Close up of the rear of the Dageki, showing the two sets of breaching blades, and the two airlocks in the center of each.



## Air Lock (2)

The Dageki has two extendable tubes that allows transfer from the Dageki into the target vessel. It is extended by pneumatic rods that press it firmly to the hull. A seal is achieved by the gaskets on the end of the tube. An iris valve is in the Dageki that seals the tube when the [Racoon T7](#) disconnects.

## Breaching blades (2)

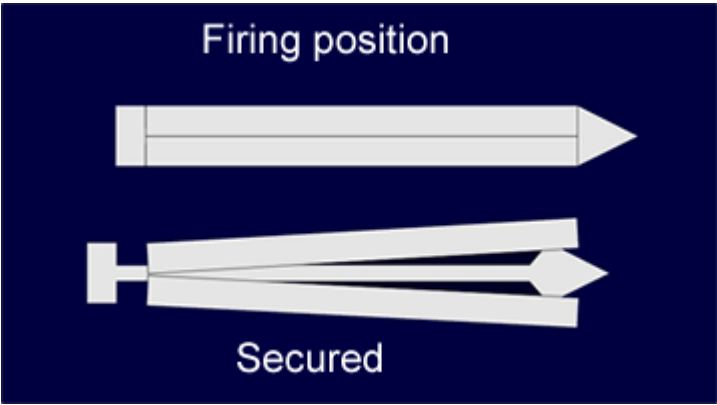
The Dageki uses two sets of breaching blades. They consist of three Aether Beam Sabers based on the ([Ke-M2-W2901 Aether Beam Saber-Rifle](#)). The blades are mounted in a rotating fixture that allows the blades to create a 2 meter opening. By creating two openings in the target vessel it allows faster troop transfer and prevents a bottleneck situation.

## Securing legs

The Dageki has four securing legs that extend when the module is positioned within 1 meter of the target vessel. There are two mechanisms available depending upon the hull composition.

## Securing Spike

When the legs make contact the securing mechanism is armed. When activated the Dageki detonates a charge in each of the legs. This charge drives in a three segment [Zesuaium](#) spike. Once driven in the mechanism expands the spike by pulling the central piece backwards. This forces the two sides outward thus securing it in position. (See image)



**Bonding compound**

When activated the pad expresses [Molecure solution](#). When the pad makes contact the solution bonds to the hull of the vessel. To release the bond the pad applies the appropriate electrical charge.

**Engines**

While the Dageki has engines it is not capable of flying on its own. The engines act solely as STL boosters allowing the [Ke-T7 "Raccoon" Transport Shuttle](#) to maintain its performance even with the addition of the Dageki.

**Shields**

The Dageki shields protect it during breaching, keeping the hull segment from hitting the module. They also engage to seal the forward section when the [Ke-T7 "Raccoon" Transport Shuttle](#) detaches to allow another shuttle to dock and discharge troops. By keeping the atmosphere in place there is no need to equalize pressure.

**Damage Capacity**

See [Damage Rating \(Version 3\)](#) for an explanation of the damage system.

- Hull: 6 SP
- Shields: 5 SP

Products & Items Database	
Product Categories	subsystems
Product Name	Dageki Strike Module

Products & Items Database	
Nomenclature	Ke-T7-B3100
Manufacturer	<a href="#">Ketsurui Fleet Yards</a>
Year Released	<a href="#">YE 31</a>

From:

<https://wiki.stararmy.com/> - **STAR ARMY**

Permanent link:

[https://wiki.stararmy.com/doku.php?id=stararmy:equipment:ke-t7-b3100\\_boarding\\_pod&rev=1693749484](https://wiki.stararmy.com/doku.php?id=stararmy:equipment:ke-t7-b3100_boarding_pod&rev=1693749484)

Last update: **2023/12/20 22:14**

