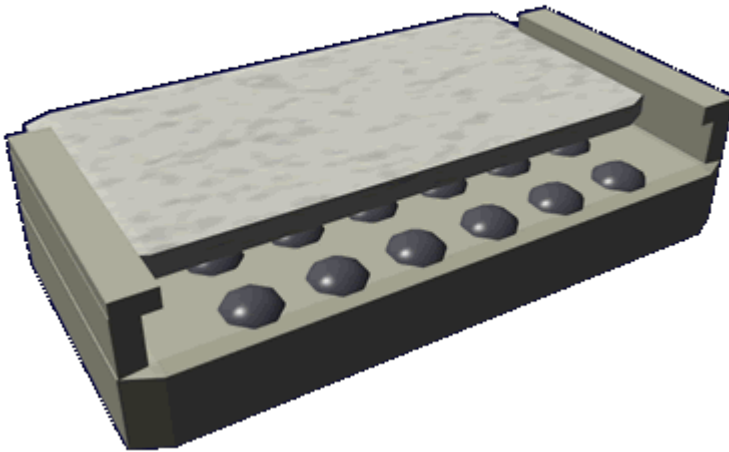


AMTC - Detachable Patient Platform

The Detachable Patient Platform (DPP) is subcomponent of the [Autonomous Medical Treatment Center \(AMTC\)](#) and became available in [YE 31](#).

The DPP is how the [AMTC](#) moves non-ambulatory patients from one station to another.



Capacity

- 1 Patient

Dimensions

Length: 2.29 meters (7.5 feet) Width: 1.14 meters (3.75 feet) Height: 10 centimeters (4 inches)

The DPP rests on a series of twenty four globes that rotate to move the DPP into or out of the top of the [AMTC](#) units.

Features

- It is covered in a non-permeable synthetic substance.
- It has a integrated anti-grav to assist the [ANU](#) move the patient safely.
- The DPP also has built in straps that can be used to restrain a patient.
- The DPP has built in receiving capabilities to interface with the scanner nanomachines used.

Removing the DPP

When the DPP must be removed to transfer a patient the process is as follows:

1. The patient is secured with the built in straps. (If a patient is on the DPP.)
2. The globes lower by 2.54cm (1 inch) releasing the DPP.
3. The globes then rotate in the desired direction moving the DPP out of the unit.
4. The [ANU](#) receives the DPP activates the anti-grav for stability, and then moves the DPP to the destination station.

Inserting the DPP

1. The [ANU](#) brings the DPP to the desired unit.

Note: The DPP in the station must already be removed prior to inserting the DPP.

1. The [ANU](#) inserts the DPP into the station until it is resting on the first set of globes.
2. The station activates the globes and rotates them until it the DPP is in the proper position.
3. The globes then rise by 2.54cm (1 inch) securing the DPP in the station.

From:
<https://wiki.stararmy.com/> - **STAR ARMY**

Permanent link:
<https://wiki.stararmy.com/doku.php?id=stararmy:equipment:amtc:dpp>

Last update: **2023/12/21 04:26**

