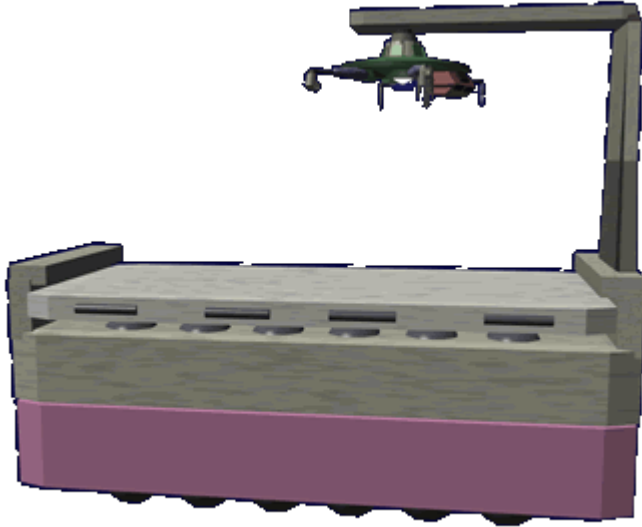


Ke-J1-E3101 - Autonomous Nurse Unit (ANU)

The Autonomous Nurse Unit (ANU) is part of the [Autonomous Medical Treatment Center \(AMTC\)](#) and became available in [YE 31](#).



About the ANU

The ANU primary purpose is the moving of non-ambulatory patients from one unit to another using the [detachable patient platform \(DPP\)](#). When attached to a specific unit, the ANU is capable of assisting the unit with caring for the patient. It moves on a set of rotating spheres similar to those used to move the [DPP](#). This gives the ANU excellent maneuverability because it can move in any direction. When not in motion, the ANU secures itself to the [AMTC](#) unit it is currently assigned to. This prevents the ANU from drifting off in the event of a loss of gravity for shipboard installations.

History

The ANU was developed as part of the [AMTC](#). It is commonly referred to as the Na-su (Nurse).

Statistical Data

General

Organization Using This item: [Star Army of Yamatai](#), Yamatai government agencies, and Civilians Type:

Medical Center Nomenclature: Ke-J1-E3101 Designers: [Ketsurui Zaibatsu](#) Research and Development teams, [Jalen Sune](#) Manufacturers: [Ketsurui Zaibatsu](#), [Star Army of Yamatai](#) Date entered service: [YE 31](#)

Supported species

Currently the ANU is capable of providing nursing assistance care to the following species:

- [Human](#)
- [Yamataian](#)
- [Nekovalkyrja](#)
- [Nepleslian](#)
- [Elysian](#)

Capacity

- 1 Patient

Dimensions

Length: 2.44 meters (8 feet) Width (without DPP): .91 meters (3 feet) Width (with DPP): 1.14 meters (3.75 feet) Height: 2.44 meters (8 feet)

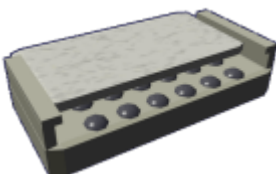
Common Components

The ANU has the following components:

- [Computer Program Module](#) with appropriate programming equivalent to that of a nurse. The programming is updatable by trained technicians.



- [Detachable Patient Platform \(DPP\)](#)



- [Scanner nanomachines](#) developed for the [Portable Medical Scanner PMS-1M](#).
- [Medical equipment unit](#) with medical tools for the specific application.



- [Self-contained emergency power \(SEP\)](#)

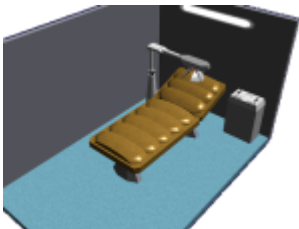


- [Containment Forcefields](#)
- [Integrated Atmosphere System](#)
- [Integrated Decontamination System](#)

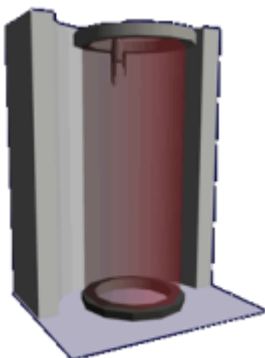
Other Systems

The ANU can interface with the:

- [Type 30 Mental Transfer and Backup Unit](#)



- and [Hemosynthetic Reconstruction Tubes](#).



From:

<https://wiki.stararmy.com/> - **STAR ARMY**

Permanent link:

<https://wiki.stararmy.com/doku.php?id=stararmy:equipment:amtc:anu>

Last update: **2023/12/21 04:26**

