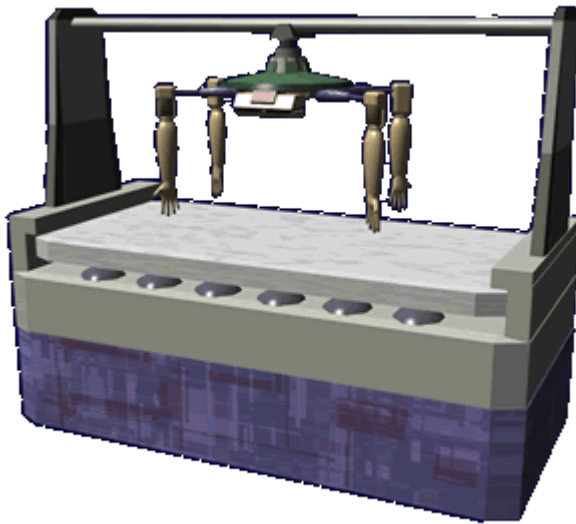


# Ke-J1-E3105 - Autonomous Massage Unit (AMU)

The Autonomous Massage Unit (AMU) was added to the [Autonomous Medical Treatment Center \(AMTC\)](#) offering and became available in [YE 31](#).



## About the AMU

The AMU provides massage therapy (the practice of soft tissue manipulation) for physical, functional, and in some cases psychological purposes. These are some of the massage treatments the AMU can perform, but it is not limited to these only:

- [Anma](#)
- [Acupressure](#)
- [Balinese massage](#)
- [Champissage](#)
- [Deep Tissue](#)
- [Shiatsu](#)
- [Stone massage](#)
- [Swedish massage](#)
- [Trigger point therapy](#)

## History

The AMU was developed as part of the [AMTC](#) to provide massage therapy treatments. The AMU can be

used stand alone as an addition to a medical facility or a fitness facility.

## Using the AMU

If part of a [AMTC](#) the AMU activates when a patient is placed on the [Detachable Patient Platform](#). It will then receive the prescribed treatment either from the [Autonomous Triage Unit](#), [Autonomous Basic Medicine Unit](#).

If part of a staffed medical center, then the AMU will wait for the attending medical person to specify the treatment.

If a standalone installation, the AMU activates when a patient lays on the [Detachable Patient Platform](#). The unit will then ask the user to specify the type of massage desired.

## Statistical Data

### General

Organization Using This item: [Star Army of Yamatai](#), Yamatai government agencies, and Civilians Type: Medical Center Nomenclature: Ke-J1-E3105 Designers: [Ketsurui Zaibatsu](#) Research and Development teams, [Jalen Sune](#) Manufacturers: [Ketsurui Zaibatsu](#), [Star Army of Yamatai](#) Date entered service: [YE 31](#)

### Supported species

Currently the AMU is capable of providing full medical services to the following species:

- [Human](#)
- [Yamataian](#)
- [Nekovalkyrja](#)
- [Nepleslian](#)
- [Elysian](#)

Note: With [Elysian](#) citizens serving in the [Star Army of Yamatai](#) their physiology was added to the capabilities.

### Capacity

- 1 Patient

## Dimensions

Length: 2.44 meters ( 8 feet) Width: 1.22 meters ( 4 feet) Height: 2.44 meters (8 feet)

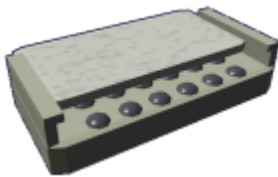
## Common Components

The AMU has the following components:

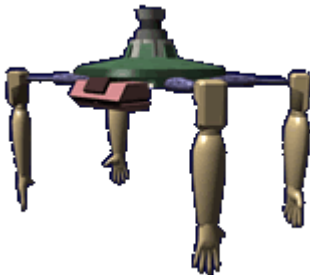
- [Computer Program Module](#) the AMU is programmed with the comparable massage skills of a massage therapist. The programming is updatable by trained technicians.



- [Detachable Patient Platform \(DPP\)](#)



- The AMU has a [Medical equipment unit](#) which features four artificial arms. They are covered in a synthetic compound that resembles skin so that they feel like human hands. The MEU also has a supply of items used in the massages. Examples are:
  - Massage oils
  - Aromatherapy oils



- [Self-contained emergency power](#)



- Integrated decontamination system

From:

<https://wiki.stararmy.com/> - **STAR ARMY**

Permanent link:

<https://wiki.stararmy.com/doku.php?id=stararmy:equipment:amtc:amu>

Last update: **2023/12/21 04:26**

