

# International Starship and Cargo Standards

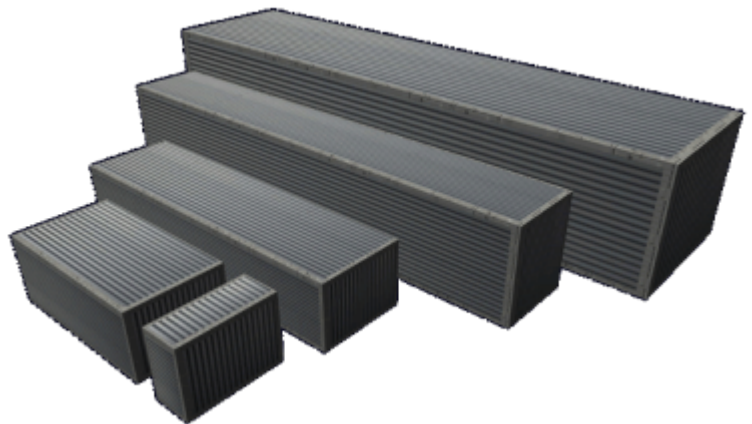
These standards are something to keep in mind for starships, especially cargo carriers.

## Airlocks and Docking Ports

Standard airlock diameter:

- for large cargo: 4m by 6m rectangular
- for cargo and passengers: 3 meters (circular)
- for personnel only: 1m

## Cargo Containers



[Standard Starship Cargo Containers](#) are the standard-size containers found throughout the SARP.

Going by this, standardized cargo areas should be, ideally, in increments of 25m wide by 10m deep by 5m tall, which is pretty reasonable and easy.

For huge (100m long), external cargo loads, one can also use [Detachable Outer Containers](#).

## Escape Pods

Civilian ships operating a commercial passenger transport service must have 120% of their passengers worth of escape pods seats. Cargo ships are recommended but not required to have escape pods. Military ships' needs are determined by individual militaries.

From:  
<https://wiki.stararmy.com/> - **STAR ARMY**

Permanent link:  
[https://wiki.stararmy.com/doku.php?id=international:starship\\_and\\_cargo\\_standards](https://wiki.stararmy.com/doku.php?id=international:starship_and_cargo_standards)

Last update: **2023/12/20 18:20**

