

# Project Kyasshu - YSS Bourou

The Bourou or (*Watchtower*) was created as part of the [Scientific Studies Service \(SSS\) Project Kyasshu](#) it came online in [YE 31](#).

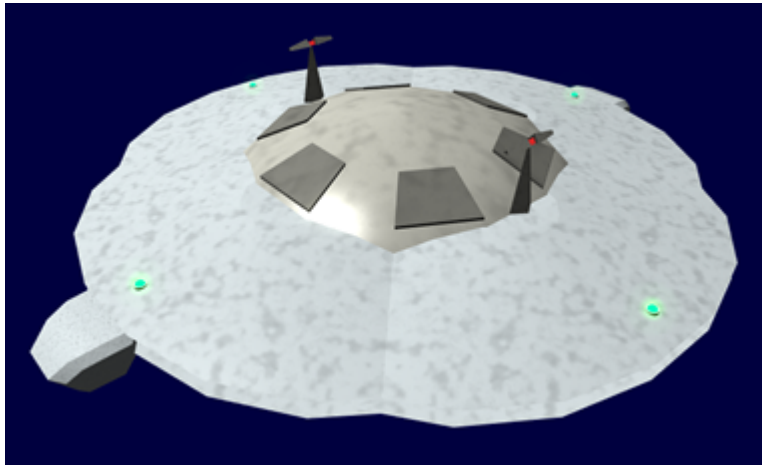
At the start of [YE 35](#) the project was closed with the [NMX](#) threat neutralized. Stations were redeployed.

## About the Bourou

The *Bourou* is a modified [Kisaki - Command Module](#). The mission of the *Bourou* is to stand watch and alert the [Scientific Studies Service \(SSS\)](#) about approaching [NMX](#) forces. All personnel assigned to the Bourou and the Watchforce are volunteers.

## History

Originally this module was to be part of the fourth [Kisaki-class Starbase](#) constructed at [Yamatai \(Planet\)](#). However, due to the outbreak of the [Second Mishhuvurthyr War](#), [Saiki Kouan](#) ordered the construction of that station halted. During the planning stages of the [Kyasshu](#) [Saiki Kouan](#) contacted the [Ketsurui Fleet Yards](#) regarding using the components of that station to support the project.




## Mission

The *Bourou* serves as the home base for the Watchforce. It is where their shuttles are maintained and the shuttle crews cared for.

## Watchforce

The Watchforce consists of twenty [Ke-T8-1b Kuma Shuttles](#) deployed around the *Kyasshu*. Their mission is to watch for signs of hostile vessels, entering the region so the *Kyasshu* can be moved. The shuttle crews normally are on station for forty-eight hours then rotate out. All members of the Watchforce receive a 10% bonus to their salary for hazardous conditions.

## Deployment

Shuttles are deployed in a  [Dodecahedron](#) with each shuttle at a distance of nineteen light-years from three other shuttles. This configuration allows the Watchforce to monitor a perimeter with a surface area of 7,453 square light-years, containing a region of space some 52,561 cubic light-years.

[Click to view a rotating dodecahedron](#)

## Statistical Data

Organization Using item: [Scientific Studies Service \(SSS\)](#) Class: Kisasi-Module Nomenclature: Ke-H4-M3100x Type: Defense Designers: [Ketsurui Fleet Yards, \(SSS\)](#) Manufacturer: [Ketsurui Fleet Yards](#)

## Crew and Accommodations

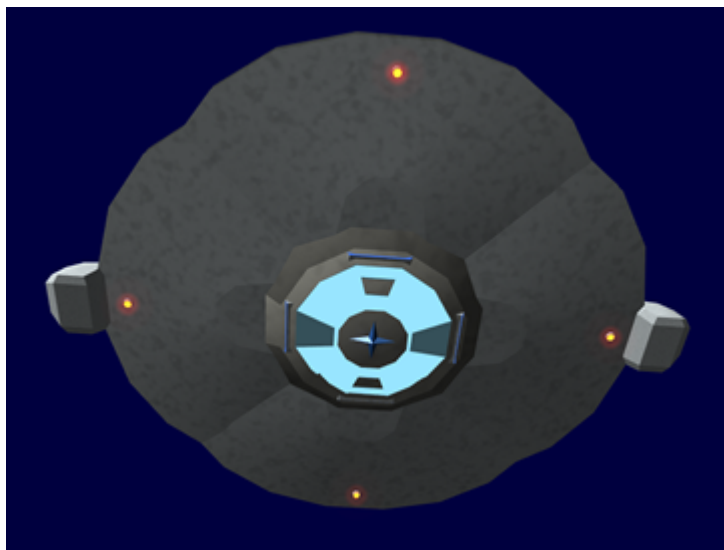
Crew: 40 Watchforce: 80 The *Bourou* has accommodations for 120 personnel. It has enough provisions for the compliment for six months.

## Dimensions

- Length: 1,717 meters ( 5,631.75 feet)
- Width: 2,125 meters ( 6,970 feet)
- Height: 613 meters (2,010.64 feet)

## Details

Name: YSS Bourou Registration: YK-C2-0001

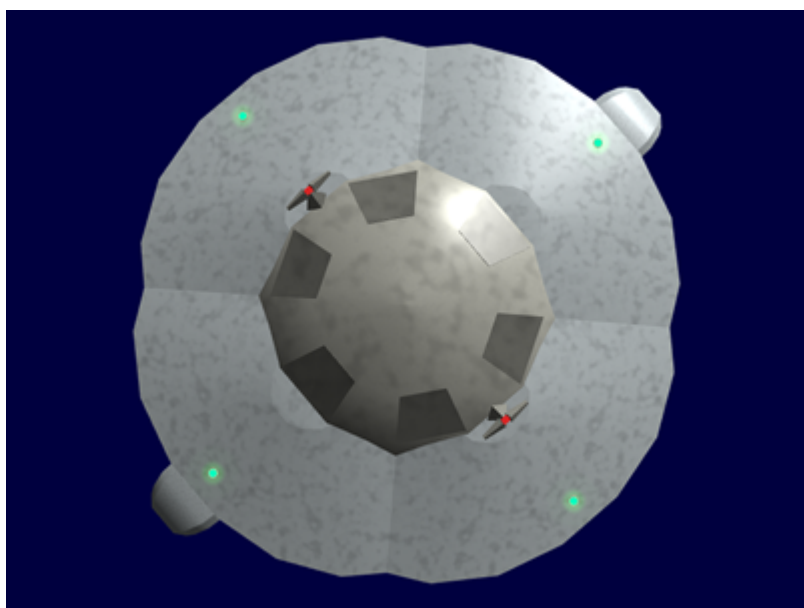


## Propulsion and Range

### Speeds

The *Bourou* has the following performance.

- **Combined Field System/Continuum Distortion Drive:**
  - Minimum: Resting motionless
  - Cruising Speed: 14,792c (1.68 ly/h)
  - Maximum Speed: 19,723.5c (2.25 ly/h)



## Unique Attributes

The *Bourou* has most of the standard features of a [Kisaki - Command Module](#) with a few changes.

The following are the unique aspects of the Bourou:

### Crew Quarters

The *Bourou* has quarters for 120 personnel. There are the forty [Standard Cabins](#) for the [Command Module](#) for single occupancy. And forty [Standard Cabins](#) modified with bunk beds for dual occupancy.

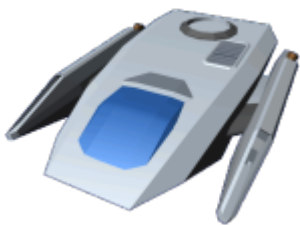
### Propulsion

The [Combined Field System](#) of the *Bourou* has been configured so that in addition to providing protection it can operate as a [Continuum Distortion Drive](#).

### Vehicles assigned

The compliment of vehicles was changed to suit the mission. No drones were included and the number of T7's was reduced, and new T8's were added in a greater number.

- 4 [Ke-T7-1B Raccoon T7 Transport shuttles](#)



- 30 [Ke-T8-1b Kuma Shuttles](#)



### Transit Station

The [Transit station](#) was removed.

## Dining Hall and Galley

This facility is located on deck four, in place of the Transit station.

### Dining Hall

The [dining hall](#) is designed to provide meals for staff.

### Galley

The [galley](#) is large enough to provide meals for staff.

## Medical Bay

On deck five a small medical bay was installed featuring:

- 2 [Ke-J1-E3102 - Autonomous Basic Medicine Unit \(ABMU\)](#)



## Fitness Area

Next to the medical bay on deck five is a small fitness area consisting of a few treadmills and weight machines and two [Ke-J1-E3105 - Autonomous Massage Unit \(AMU\)](#)



## Docking Units

The *Bourou* has two docking units that allow it to connect to [Tansaku-class Science Vessel](#) for personnel and cargo transfers.



From:

<https://wiki.stararmy.com/> - **STAR ARMY**

Permanent link:

<https://wiki.stararmy.com/doku.php?id=faction:yamatai:sss:kyasshu:bourou>

Last update: **2023/12/21 05:26**

