

Ascendancy-class Flagship

Was a Super-Flagship launched in [YE 30](#) originally intended for the [Star Army of Yamatai](#), that ended up serving as the flagship of the [United Outer Colonies Peacekeeping Forces](#), It eventually fell into the hands of renegade and traitor [Motoyoshi Kiyoko](#).



UCS Akuro III (NF-X5-05), Ascendancy-class

About the Ascendancy-class Flagship

The [Star Army of Yamatai](#) built ship that became a symbol of [Jiyuuian](#) power and prestige, the Ascendancy-class Flagship fills the role of Admiral-boat. A true command ship, ideally taking an “away from fire” or “rear fleet position” role with thick durable armor, powerful weapons but reliance on its escorts, and armor wings for cover, when faced with close, ranged attackers. It is equipped with a powerful computer, sensor, and communications systems making it ideal for leading a fleet.

The interior of the ship is luxuriously decorated making it ideal for transporting diplomats, high-ranking government officials, and Flag Officers.

The only ship of this class that was ever produced was the [The Akuro III](#).

History and Background of the Ascendancy-class Flagship

In [YE 28](#), [Ketsurui-Motoyoshi Katsuko](#), [Taisho](#) of the [Fifth Expeditionary Fleet](#) submitted the ‘Type D’ refit for the [Chiharu-class Flagship](#) to [Ketsurui Fleet Yards](#), the upgrade included: a new bridge design, a refit to the main [Continuum Distortion Drive](#), and updated weaponry. The design was sound, however as she worked on the Chiharu she quickly began to realize that there was only so many changes one could make to an already in-service design.

With high hopes, she initiated the “Uesu Project”, her attempt to design a new flagship and have its class carry the namesake of the current Emperor. She however selected to push the project aside to divert her attention to the [Takumi-Class Expeditionary Command Cruiser](#). The project went cold, and the designs sat untouched until late [YE 29](#).

In late [YE 29](#), the war with the [Sfrarabla Mishhuvurthyar Xhrafuklurp \(SMX\)](#) was coming to a culmination. The SMX were nearing core [Yamatai Star Empire](#) systems and the Star Army was losing ground fast, overwhelmed by the surges of SMX warships, including their powerful new [Shlarvasseroth-class Flagship](#). Following the Battle of [Taiie](#); the [Fifth Expeditionary Fleet](#) retreated to the [Jiyuu System](#) System, and began to rebuild. As the fleet recovered Taisho Motoyoshi was inspired to take up the abandoned “Uesu Project”, after some renaming and assistance from her Starship Improvement Program Director, [Kage Yaichiro](#), the Ascendancy-class Flagship was born. The Ascendancy name was chosen because it means dominance or superiority, a testament to the power of the design.

In [YE 30](#) the Ascendancy-class went from from drawing board to construction, and the prototype [The Akuro III](#) would be completed. It served as the Flagship of the [United Outer Colonies Peacekeeping Forces](#).

See the [The Akuro III](#) for specific history and events for this ship.

In [YE 42](#), it was also confirmed that the [Interstellar Kingdom Of Kuvexia](#) had given the vessel a major refit and upgraded its technologies with their own. Those statistics are not listed below.

Following a battle with the [YSS Mazu](#), in [YE 43](#) the [The Akuro III](#) was towed back to [Gemini Star Fortress](#) to await decisions to be made about its future and the [Kuvexian Military](#) modifications can be analyzed.

- Class: [MY-B1-1A](#)
- Type: Super-Flagship
- Designers: [Motoyoshi Fleet Yards](#), [Ketsurui-Motoyoshi Katsuko](#), [Kage Yaichiro](#)
- Manufacturer: [Motoyoshi Fleet Yards](#), [Hotaru Star Fortress](#), [Himitsu Star Fortress](#) in the [Jiyuu System](#)
- Fielded by: [Motoyoshi Fleet Yards](#) and [Yamatai Star Empire](#), [United Outer Colonies Peacekeeping Forces](#)
- Production: Prototype

Passengers

- **Crew:** 22,000
- **Maximum Capacity:** 700,000

Dimensions

- Length: 6200m
- Width: 4100m
- Height: 800m

- Decks: Average 8m

Propulsion and Range

In compliance with the [Starship Speed Standard](#):

- [Continuum Distortion Drive](#): 12,500c
- Hyperspace Fold Drive: 0.5ly/m
- Sublight Engines: 0.375c
- Lifespan: Unknown

Damage Capacity

See [Damage Rating \(Version 3\)](#) for an explanation of the damage system.

- Tier 15

Notable Internal Features

Inside of the Ascendancy-Class Flagship is several important compartments.

Command Zones

- [Main Bridge](#)
- [Nodal Interface War Room Simulation Chamber](#)
- [Taisho's Office](#)
- [Fleet Information Center](#) (In progress)

Laboratory/Research Zones

- [Hospital and Medical Laboratory Complex](#)

Habitat Zones

- [MFY Type 30 Standard Officer's Cabin](#)
- [MFY Type 30 Standard Enlisted Bunkroom](#)
- [MFY Type 30 Standard Enlisted Bath House](#)
- [MFY Type 30 Standard Enlisted Dining Hall](#)
- [MFY Type 30 Standard Wardroom](#)
- [MFY Type 30 Standard Laundry Facility](#)

Service and Support Zones

- [Engineering Section](#)

Systems

MIKO Electronics Systems

- [MIKO Electronics Suite](#)

MIKO is a Modular Quantum Computer System or MQCS; It starts with rather simple quantum computer core that can be expanded by the addition of other modules. The core and its modules all run the SHRINE operating system (SHRINE-OS).

MIKO Components(Sensor and Communications Included):

- (2) [MIKO Core](#)
- (2) [Tactical Modules](#)
- (2) [Support Modules](#)
- [SQUID Interface](#)

Ascendancy Spaceframe and Hull

The Ascendancy's primary spaceframe is constructed primarily of [Yamataium](#) truss frames interlocked together. These major trusses are arranged in higher concentration around the sections of the vessel that are most likely to become stressed like around the CDD nacelles, auxiliary engines and to provide additional strength to areas such as armor bays, the main bridge, and around major weapon mounts. Smaller [Yamataium](#) trusses that form the interior frame of the vessel provide internal support for decks and interior sections.

Force field generators are arranged at major truss junctions to provide additional strength, and protect these junctions from anti-matter hits in the event the major space frame becomes exposed or compromised in a battle. Of course, the force field generators are small and can only absorb a limited amount of energy before becoming useless but this serves effort to provide strength to the space frame.

The secondary framework is nested within the primary space frame to provide additional support and provide support for ship systems. The secondary frame is composed primarily of small [Yamataium](#) trusses and rods lined with [Yarvex](#) meshing to provide shielding to interior structures.

The primary substrate of the hull plating is 2.0m thick [Yamataium](#) plates.

Th following systems are integrated into the hull:

- [Regenerative Shield System](#)

- Graviton Projection Arrays (14)
- Mounting and Docking Ports (2)

Multi-purpose Rapid Launch Bays (2)

The bays are located in the forward pylon connectors, they are the height of three average deck sections. The combined bays serve for the launch of shuttles and armors. The floor is a glossy, polished black and the walls are made of the typical gray paneling found in most Star Army ships.

Maintenance alcoves line the forward most section of the bays, as well as pilot locker storage and weapon holds for armor weaponry and accessories. In the event of an emergency, blast shutters and force fields can seal the bays off from the rest of the ship.

Kasairyuu Launch Bay

A reserved multipurpose launch bay exclusively used by the [17th Kasairyuu Power Armor Wing](#) located between the top and lower section of the primary hull.

Emergency Systems

[Star Army Standard Starship Emergency Systems](#)

- [Star Army Escape Pod, Type 30](#) (6000)
- [Soul Savior Pod](#) (3)

Environmental Support Systems

- [Hemosynthetic Conduit System](#)
- [Nodal System](#)

Primary Power Systems

- (22) [Kaminari Quantum Foam Generators](#)
- (2) [Aether Generator](#) systems dedicated to powering the Aether Shock Array.

Refueling Systems

[Matter Collection System](#)

Propulsion Systems

- [Ryuusei Gravimetric Drive](#) (8)
- [Mizu Series -- Tsunami CDD Assembly](#) (2)
- [Yumeoibito \("Dream Chaser" Drive\)](#). (2)

Weapons

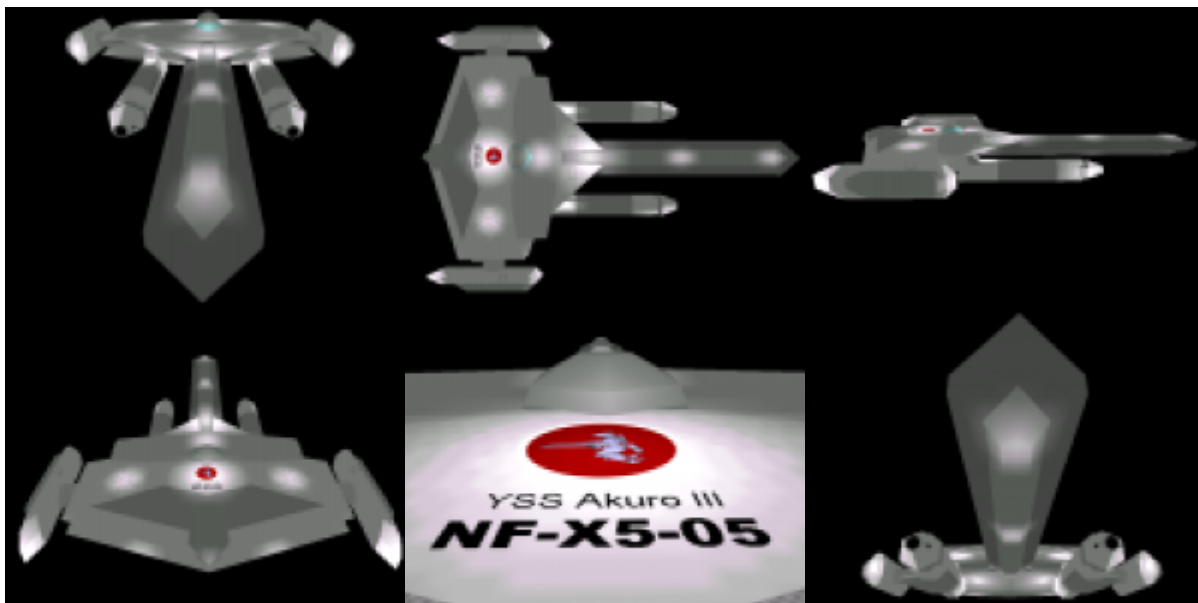
- [My-B1-W3000 Aether Shock Array](#) *Damage: Tiers 13* * [Link Device \(1\)](#): *Damage: Tier 11, Medium Anti-Starship (star) Tier 12, Heavy Anti-Starship(quasar)* * [Unified Theory Cannon \(4\)](#): *Damage: Tier 12, Heavy Anti-Starship* * [Subspace Encased Anti-Neutron Turret \(16\)](#): *Damage: Tier 12, Heavy Anti-Starship* * [Antineutron beam turrets \(220\)](#): *Damage: Tier 6 Heavy Anti-Armor*
- 100 Multipurpose Missile Launchers, [AS-5 Series Torpedoes](#)
- [Swarm Missile Launchers](#) Tier 6
- [Ke-B4-W3000 Striker Array](#) *Damage: Tier 8*

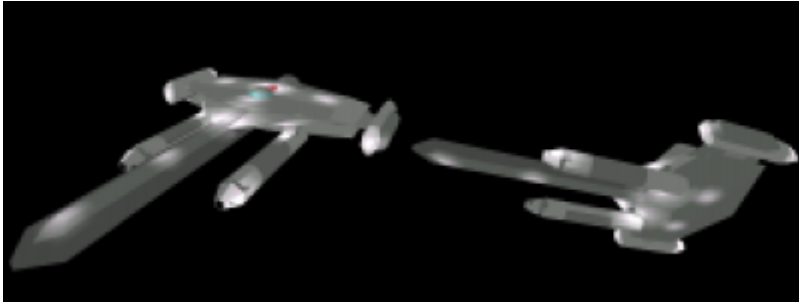
Vehicle Loadout

The Ascendancy Class has adequate launch facilities for many accessories.

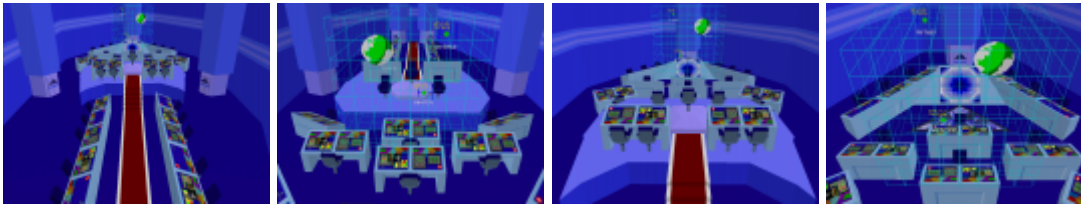
Art Gallery

Ship Hull





Bridge



OOC Notes

Artwork by [Toshiro](#)

From:
<https://wiki.stararmy.com/> - **STAR ARMY**

Permanent link:
https://wiki.stararmy.com/doku.php?id=faction:united_outer_colonies:ascendancy_class_flagship&rev=1701114486

Last update: **2023/12/20 21:45**

