

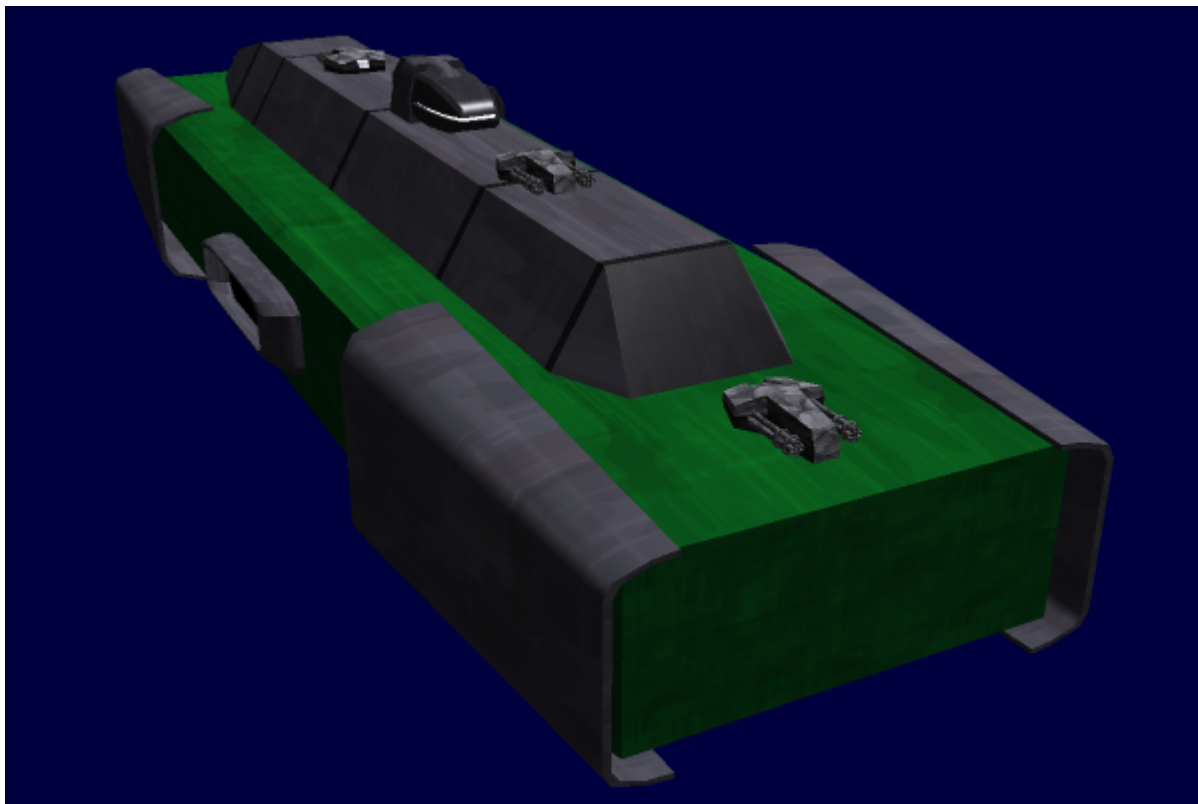
# Na-L3-1A Endurance Class Transport

Built by [NAM](#), the Endurance class is the transport version of the [sword\\_class\\_frigate](#) to be marketed towards both the civilian and military sectors.

## About the Ship

The Endurance is a small cargo/freight supply ship designed for military supply running and merchants with budget considerations. Thus, it is priced towards the average merchant, as opposed to the larger [Warhorse](#). Though built by the military corporation [NAM](#), civilians may operate one provided they have a license.

## Appearance



The Endurance class, like the Sword class, is rectangular shaped starship with two long islands running down its ventral and dorsal length. It has reinforced Durandium armor plates on its sides. There is a shuttle bay opening on both sides. There are three engines located at the rear of the warship.

It retains the large fore and aft armor plates from the Sword due to the structural reinforcement provided by the plates. Customers willing to forgo the armor plating pay less but the ship's hull strength is lowered.

# Statistics and Performance

## General

**Class:** Na-L3-1A

**Type:** Cargo or Personnel Transport

**Designers:** [Nepleslian Arms and Munitions](#)

**Manufacturer:** [Nepleslian Arms and Munitions](#)

**Production:** Ready for Mass Production

**Fielded by:** [Nepleslian Star Navy](#), Civilians

**Cost:** 380,000 DA

## Passengers

**Crew:** 26 operators are recommended, 14 are required.

**Maximum Capacity:** There are accommodations for 50 people. About 200 people can fit aboard in an emergency, but the ship would be extremely cramped and most occupants would have to use hammocks or sleep in the passageways.

## Dimensions

**Length:** 120 meters (394 feet)

**Width:** 30 meters (98 feet)

**Height:** 34 meters (111 feet), at highest point of bridge; 28 meters (92 feet) without

**Decks:** 8 (2.2 meters each)

## Propulsion and Range

**Continuum Distortion Drive:** 10,000c

**Hyperspace Fold Drive:** .3 LY/h

**Sublight Engines:** .32c

**Range:** 14+ months depending on space given to supply storage

**Lifespan:** 40+ years

**Refit Cycle:** 2 years

## Damage Capacity

See [Damage Rating \(Version 2\)](#) for an explanation of the damage system.

- Hull (With Armor Plating): 12 (Threshold 2)
- Hull (Without): 8 (Threshold 2)
- Shields: 12 (Threshold 2)

## Inside the Ship

### Deck Layout

The Sword has 4 decks running the length of the ship in addition to another deck in the ventral and dorsal islands. There are also a separate deck for the ship's bridge.

### Armory

The Armory is located in the middle of the ship's main body.

It contains numerous small arms for use against boarders, including shotguns and rifles.

There are weapons lockers located in Engineering, on the Bridge and the Forward Armament Deck, near the ship's magazine. Those contain a smaller number of pistols and shotguns as well as ammunition for the weapons stored.

### Bridge

The ship's bridge is located atop the ventral island and is accessible via two elevators or vertical shafts with metal rung ladders. A bridge crew of six is required to operate at peak efficiency.

### Captain's Suite

The Captain's suite is located in the middle of the ventral island. This room is the Captain's private quarters.

### Crew Cabins

Crew cabins are located in the middle of the ventral island. Enlisted ranks live four to a cabin, NCOs two, and officers receive their own cabin.

### Crew Recreation

Crew recreation is located in the aft of the ventral island. There is a gym, lounge, mess hall and a small

theatre room.

## Engineering

Engineering is located in the aft of the ship and is protected by multiple layers of nerimium and durandium armor plating. A crew of six engineers is required to operate at peak efficiency.

## Maintenance Conduits

Maintenance conduits run throughout the ship, between the interior bulkheads and the durandium frame. They are generally very tight and require small to medium sized personnel to enter in light clothing. Due to the lack of air circulation, it is also very hot.

## Medical Center

The medical center is located in the center of the ship's body.

## Passageways

Passageways run the length of the ship whilst elevators and vertical shafts bisect them every 40 meters, allowing for movement between upper and lower decks.

## Ship's Holds

Cargo holds are located in each of the three sections of the dorsal island. Each hold is able to store two Large [SSCC](#). There is an additional hold in the fore sections of the main body and ventral islands. Each is able to store a Large [SSCC](#).

## Shuttle Bay

Houses four [Onset Shuttle](#) and has room for four more. It is larger than the Sword class' shuttle bay.

## Wardroom

The Wardroom is located in the aft of the ventral island. It is normally only open to officers and their guests though civilian crews are far less strict about this than their military counterparts.

# Ship Systems

## Armored Hull and Hull Integrated Systems

- [Durandium](#) frame

## Power Generation

### Primary Power

- (1) [Na-ZPER-02b Hyperspace Tap Reactor](#)

### Secondary Power

Utilized to power secondary systems and provide for the plasma drives.

- (2) [Na-HFR-01a Heavy Fusion Reactor](#)

### Auxiliary Power

Auxiliary power generation only kicks in if both the main and secondary systems are offline. While it does not produce nearly as much power as the larger power generators, the auxiliary system is at least enough to keep life support, computer systems and one other system going at minimal power.

- (2) [Na-UCF-4a Ultra Compact Fusion Generator](#)

## Computers and Electronics

- [Advanced Command/Combat Executive AI](#)

### Sensors

- [NAM Sensor Suite](#)\*

### Communications

- [NAM Communications Suite](#)\*

## Emergency Systems

In the event of power or system failure, the Sword's auxiliary fusion generators are designed to provide power to life support and medical. It is also capable of powering communications and passive sensor system. The generators cannot, however, provide enough power to support weapons system without sacrificing life support or other critical areas.

## Life Support Systems

The Endurance features a series of air purification systems, atmospheric scrubbers and recycling equipment as well as a waste collection system. It also includes water purification, recycling and creation to extend the amount of time it can go without resupply. To reduce costs, there is no redundant back up though one may be installed.

## Propulsion

### STL Propulsion Systems

- [Na-PID-33 Plasma Impulse Drive](#)

### FTL Propulsion Systems

- [Continuum Distortion Drive](#)

## Shield Systems

The Endurance utilizes on Gravimetric and Electromagnetic shield systems to provide it rudimentary protection against the harshness of space, as well as any marauding pirates.

## Weapons Systems

- 8 Heavy Plasma Vulcan Turrets: (ADR 5/SDR 1)

## Vehicle Complement

### Shuttles

#### 4 Na-S/Sh-01 Zachitnik-class Shuttle

From:

<https://wiki.stararmy.com/> - **STAR ARMY**

Permanent link:

[https://wiki.stararmy.com/doku.php?id=faction:nepleslia:starship\\_classes:endurance\\_class\\_transport&rev=1544457523](https://wiki.stararmy.com/doku.php?id=faction:nepleslia:starship_classes:endurance_class_transport&rev=1544457523)

Last update: **2023/12/21 02:02**

