

Paring Class Escort Destroyer

The Paring Class was created by the [OSO](#) in [YE 39](#) to serve as a smaller fire support ship for their fleet. It has relatively light weapons and a small crew requirement, but fairly heavy armor.

About the Ship

The Paring Class was designed with fire support in mind. It has a relatively light armament, low crew capacity and excellent survivability due to high maneuverability and armoring.

Key Features

The key features of the Paring Class are its weapons systems, propulsion and armor. It is highly mobile, able to deliver attacks in groups and quickly get out of range for retaliation.

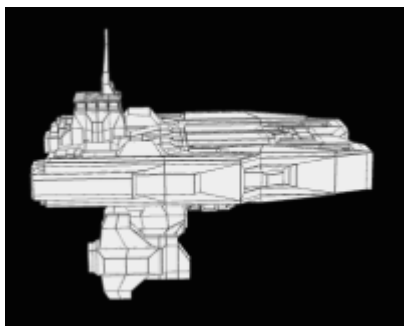
Mission Specialization

- Hit and run and harassment
- Recon
- Fire support

Appearance

The Paring class is very flat. It consists mostly of a large slab of armor with winglets and sensor suites on the underside. Its bridge sticks out of the top of the slab at the rear of the ship.





History and Background

The Paring class was devised after a need was recognized for cheaper ships than the [Broadsword Class Cruiser](#) for use in system security, recon and fire support. [Alex Patton](#) created the design with assistance from computer design programs. The Paring class was never actually produced in practice, however the [Exodus Fleet](#) is considering breaking out the unused design for use in anti-pirate operations.

Statistics and Performance

The Paring class is fast, maneuverable, well armored and relatively lightly armed.

General

- Class: Paring class
- Type: Escort Destroyer
- Designers: [Alex Patton](#)
- Manufacturer: [Independent](#)
- Fielded by: [Independent](#)

Passengers

Crew: 30 operators are recommended, 15 are required.

Maximum Capacity: There are accommodations for 30 people. About 50 people can fit aboard in an emergency, but the ship would be extremely cramped.

Dimensions

- Length: 110 meters
- Width: 80 meters

- Height: 30 meters
- Decks: 4, 7.5 meters each

Propulsion and Range

- Continuum Distortion Drive: 1000c (2 AU/sec) with a charge time of 10 minutes using the [Fusion Capable Continuum Distortion Drive \(FDD\)](#).
- Sublight Engines: .35c using an [Inline Aether to Plasma Drive](#).
- Range: 100 days
- Lifespan: 25 years
- Refit Cycle: 5 years

Damage Capacity

See [Damage Rating \(Version 3\)](#) for an explanation of the damage system.

- Hull: Medium Starship (T11) rated hull.
- Shields: Medium Starship (T11) rated shields.
- Shield Type: Conformal

Inside the Ship

The Paring class is less comfortable than the [Broadsword Class Cruiser](#), however it still has a few amenities.

Compartment Layouts

All crew quarters and the wardroom are located along the spine of the ship. The Armory, Medical bay and Restrooms are located along the spine as well.

Armory

The Broadsword hold its weapons and power armors in three [Armories](#) located throughout the ship, one at the stern, one at the bow, and one amidships.

Bridge

The Broadsword sports both a bridge and a CIC. Both are a [Standard Bridge](#). However, since the primary bridge is located on a elevated position, during combat it can retract into the hull for more protection.

Captain's Suite

The broadsword has one [Captain's Suite](#) for the captain of the vessel.

Cargo Storage Areas

The broadsword has two cargo storage areas in the lower decks, both accessible by large cargo lifts. Each hold is 10 meters long and wide by 7 meters tall.

Crew Cabins

15 double occupancy [cabins](#) for general crew and 5 single occupancy [cabins](#) for officers. In addition to these there are also two [head](#) located at the bow and stern the ship and well as one [laundry room](#).

Engineering

The Broadsword has an engineering compartment capable of performing repairs on almost every system on the ship, as well as serving as a hub for the many maintenance conduits that are present throughout the ship.

Maintenance Conduits

There is a network of [Standard Access Tunnels](#) throughout the ship.

Medical Center

There is one [Standard Medical Bays](#), in the center of the ship

Passageways

The Broadsword uses [Standard Hallways](#).

Wardroom

The Broadsword has a single [Wardroom](#) located adjacent to a [Origin Industries Standard Kitchen](#).

Elevators

There are [Elevators](#) all throughout the ship to allow for changing decks.

Ship Systems

Armored Hull and Hull Integrated Systems

Three meter thick spaced [Nerimium](#) armor all across the ship. In the gaps between the armor layers there is a ballistic gel that serves to slow down projectiles and seal off breaches before solidifying into hard armor after a hull breach.

Computers and Electronics

A [queen](#) level Destiny AI and computer suite, complete with all of the sensors and computing capabilities that it confers.

Emergency Systems

The Paring has emergency systems located throughout the ship, such as fire suppressant systems, emergency fusion generators and bulkheads to seal off hull breaches.

Life Support Systems

The Paring has capable environmental control and life support systems, capable of regulating temperature, air quality and composition, humidity, as well as air, biomass and water recycling systems.

Propulsion

As well as RCS systems, the Paring uses a Inline Aether to Plasma Drive for its primary thrust.

Shield Systems

The Paring has nodes located throughout the hull that project a conformal set of shields all across the ship. By depowering some of these nodes, shields can be lowered in a certain area to allow EVA or shuttle craft to exit a hangar.

Each node is composed of a projector for [Gravity shields](#) and a projector for [Electromagnetic shields](#).

Weapons Systems

- [500mm Gauss Impelled Positron Cannon](#): 1, Tier 12
- [Pseudoflare Artillery Turret](#): 8, Tier 9
- [Warding Rune Autocannon](#): 12, located all over the ship to allow for full 360 degree coverage, point defense Tier 5

Vehicle Complement

2 Shuttlecraft, located in a small hanger on the bottom of the ship.

OOC Notes

[Alex Hart](#) created this article on 2017/03/16 09:34.

[Approved](#) March 15 2017 by [Ametheliana](#)

From:
<https://wiki.stararmy.com/> - **STAR ARMY**

Permanent link:
https://wiki.stararmy.com/doku.php?id=faction:independent:exodus_fleet:paring_class_escort_destroyer&rev=1700311793

Last update: **2023/12/21 01:41**

