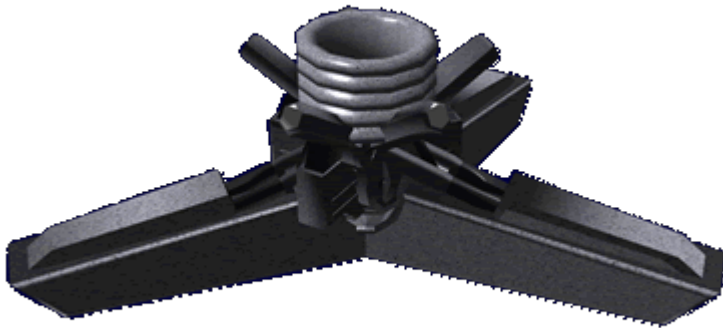
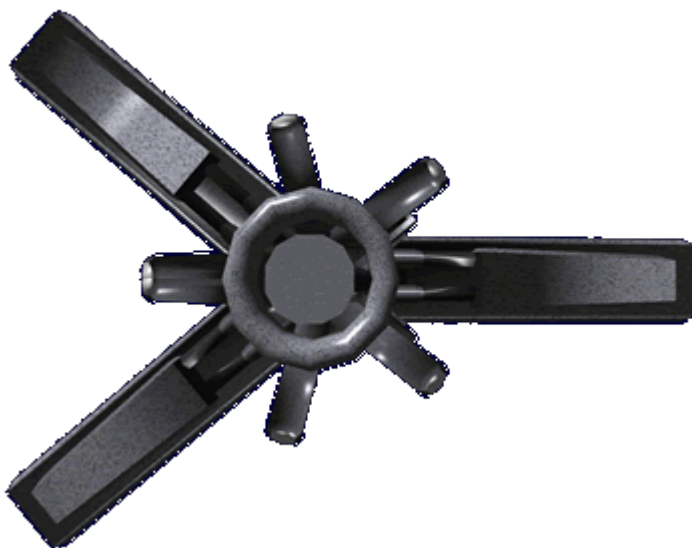


Ikâ'te Bapa (Landing Foot)

The Ikâ'te Hodi (*Landing Foot*) is a standard feature of all *Poku Saeruo Degonjo*, this design has been in use since 720CY ([YE 11](#)).



Each foot consists of three prongs made of *Mâqirây* (*Bound Metal*). They are connected at the center of the foot, and are pneumatically powered to flex to match the surface. The prongs are positioned with one in the front and the other two in the back



Each foot is connected to the ship by the hodi *leg*. This is a pneumatically driven extending rod. This is used to deploy the legs and to level the starship by adjustment. The hodi is protected by a flexible sheath that keeps debris from getting into the landing foot mechanisms.

Last
update:
2023/12/21 04:22 faction:hidden_sun_clan:technology:landing_legs https://wiki.stararmy.com/doku.php?id=faction:hidden_sun_clan:technology:landing_legs

From:
<https://wiki.stararmy.com/> - **STAR ARMY**

Permanent link:
https://wiki.stararmy.com/doku.php?id=faction:hidden_sun_clan:technology:landing_legs

Last update: **2023/12/21 04:22**

