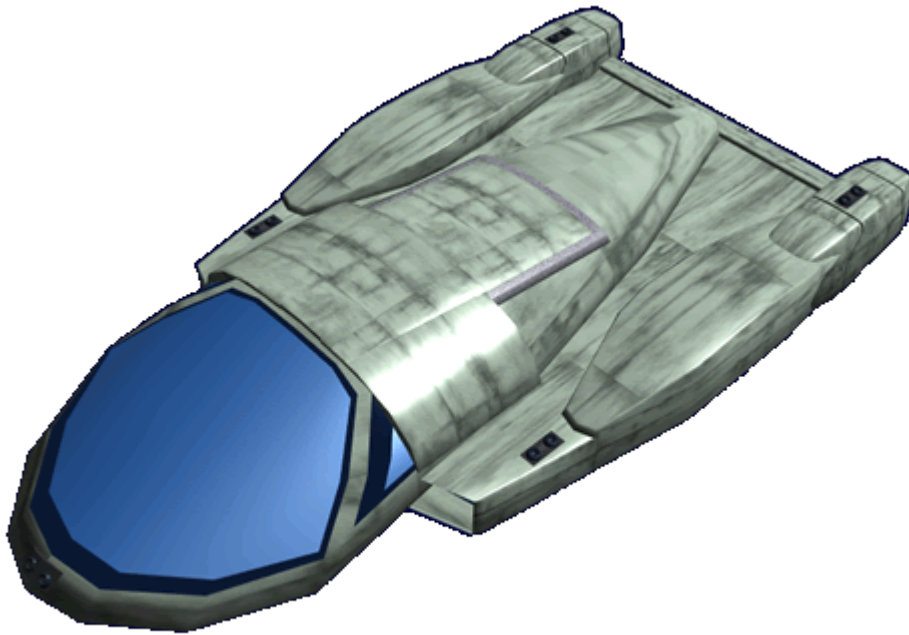


HS-AS1-1a "Yome'iko" Âdortin'sa Vona'â (Two-person Flitter)

The "Yome'iko" (Red Hawk) is an in-system shuttle developed for use by the [Poku Saeruo Degonjo](#). It became available in [YE 31](#).



About the Yome'iko

The Yome-iko is the smallest shuttle currently used by the [Poku Saeruo Degonjo](#). It has a compartments containing cockpit, passenger area, and cargo space. Yome-iko is the first two person shuttle to be put into production, often used for surveying areas.

History of the Yome'iko

The *Yome-iko* was developed to help improve clan resource gathering. The *Yome-iko* is a science shuttle and outfitted with the latest sensors the clan has available. Many of the clan's refitted [HS-SE1-1A Ismâo'a \(Searcher\) - Class Ship](#) and [HS-SS2-1a Ytaqo'a \(Gatherer\) - Class Ship](#) now carry this shuttle.

Appearance of the Yome'iko

The Yome'iko is a lifting body design, it features an expansive view for the pilot. It is painted in the typical pale green shade of the clan. Maneuvering thrusters can be seen at various points of the craft, and the plasma drives are mounted on either side of the passenger module. The entry hatch can be seen on the top.

Statistics and Performance

General

Class: Yome'iko Nomenclature: HS-AS1-1a Type: Shuttle Designers: [Otâmovi Wiy Jael \(Silver Moon Sect\)](#)
Manufacturer: [Poku Movi Vamâqi \(Clan Void Berth\)](#) Production: Mass Production

Dimensions

Length: 8.44 meters (feet) Height: 1.275 meters (feet) Width: 4.5 meters (feet)

Passengers

Crew: 2

Speeds

The *Yome'iko* is an nimble craft.

- Atmospheric:
- Atmospheric: Cruise: 2,143 kmph (1,332 mph) Maximum: 6,125 kmph (3,806 mph)
- [Plasma Thrusters](#)
- Class 3A Maximum speed .3c (~89,937 kilometers per second)(~55,884 miles per second)
- Range: Operating time 7 days

Durability and Maintenance

Service Lifespan: Estimated 10 years of constant use, possibly longer with refits.

Refit Cycle: Routine updates are done when returned to [Degonjo Saeruo \(Hidden Sun System\)](#) by the [Silver Moon Sect](#) at the [Poku Movi Vamâqi \(Clan Void Berth\)](#)

Damage Capacity

See [Damage Rating \(Version 3\)](#) for an explanation of the damage system.

- Hull: 16 (Armor)
- Ablative Armor: 12 (Threshold 3) (Armor)

Inside the Yome'iko

The *Yome'iko* has a single compartment cockpit. The interior has a curved ceiling. There are two [Buoka Vyma'te \(Acceleration Couch\)](#) installed in line.



Cockpit

The cockpit has two [Buoka Vyma'te \(Acceleration Couch\)](#). When entering the cockpit the Buoka Vyma'te are laid fully back to make entering the craft easier. Once the occupant sits on the seat the back lifts into proper position. The forward seat is for the pilot, and the rear is for the mission person.

Cargo Area

The rear area of the cockpit can be used as a cargo area.

Systems

Armor Construction

The *Yome'iko* uses a frame constructed of *Mâqitua (Light Metal)*, and is plated with *Mâqirây (Bound Metal)* plating. The cockpit canopy is *Mâqitua'tomin (Transparent Light Metal)* which allows the pilot to use visual if necessary.

Communications

The *Yome'iko* is equipped with the standard *Ta'te Goly Norjopa (Far Talking Systems)*.

Life Support

The *Yome'iko* has a compact *Niufofi'a Norjopa (Atmosphere Systems)* and an emergency reserve good for twenty-four hours. It also has a compact *Kyafofi'a Norjopa (Water Purification)* for recycling water on long patrols

Power

Primary Power

The *Yome'iko* uses a *Otâmovi Wiy Jael (Silver Moon Sect) Âmanus Tyokanorjopa (Anti-Hydrogen Reactor)* to power primary system. It is tied to a *Gean Norjopa (Generator)*

Secondary Power

The *Yome'iko* uses a pair of *Otâmovi Wiy Jael (Silver Moon Sect) Sumanâ-a Tyokanorjopa (Fusion Reactors)* to provide backup power, each has its own *Gean Norjopa (Generator)*.

Propulsion

The *Yome'iko* uses three types of propulsion systems for its normal operation.

Plasma Thrusters

The *Yome'iko* uses a pair of [Tinvymai Tyokame \(Plasma Drives\)](#) for STL travel.

Anti-Gravity

The *Yome'iko* uses [Heim Force Generator](#) for the comfort of its passengers and for propulsion in atmosphere.

Maneuvering Thrusters

The *Yome'iko* uses a series of [Gean Vymasa \(Ion Thruster\)](#) for attitude control and station keeping.

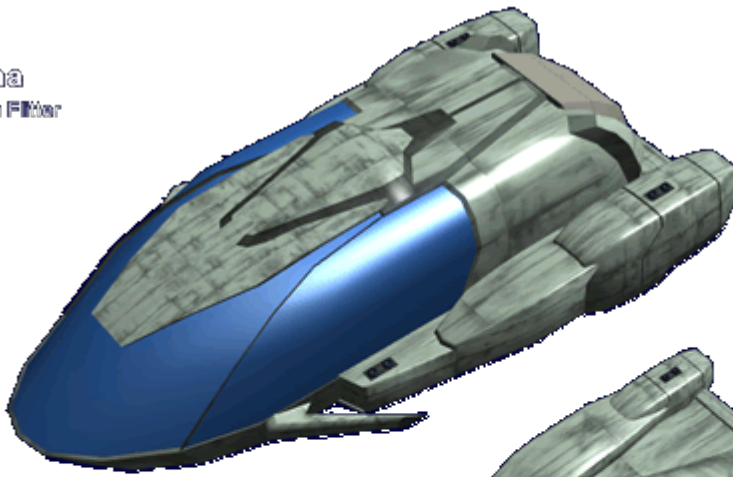
Sensors

The *Yome'iko* is equipped with the follow items from the [HS-AF1-E720xx Tin'sa Mâbor'a \(Small craft Sensors\)](#)

- [HS-V1-E1100 Gravimetric Scanner](#)
- [HS-V1-E1101 Imaging Cluster](#)
- [HS-V1-E1102 Ranging](#)
- [HS-V1-E1104 Geological Sensor](#)
- [HS-V1-E1105 Life Detection](#)

Comparison

Dyef'una
Six-Person Fitter



Yome'tko
Two-Person Fitter

From:
<https://wiki.starmy.com/> - STAR ARMY

Permanent link:
https://wiki.starmy.com/doku.php?id=faction:hidden_sun_clan:ships:hs_t1_flutter

Last update: 2023/12/21 04:22

