

# HS-AF1-P756/00 Meqpâ'a Gulvisa Tinvyma Movidoanor Module

The HS-AF1-P765/00 was developed for use with the [HS-AF1-1c Meqpâ'a Gulvisa \(Prowler Fighter\)](#) to provide FTL capabilities, it became available in [756 CY](#) or [YE 37](#).

## About the HS-AF1-P756/00

The HS-AF1-P756/00 development was based on a concept from before the [Norka \(The Exodus\)](#). Clan Gulvisa lack independent FTL capabilities. They can only do FTL by means of a [HS-ST3-1a Fuâmy'a Ruomâqi \(Watcher Stations\)](#) creating tunnels for it. The FTL Module allows the Gulvisa to initiate FTL travel on its own. Upon arrival at destination, the FTL module can be detached so that the Gulvisa can engage hostiles. Or it can be detached so the Gulvisa can conduct a survey. A Gulvisa cannot enter the atmosphere with the module attached. After completing the mission the Gulvisa can dock with the module. The module contains a [Tinvyma Movidoanor \(Tunnel Drive\)](#) to create a wormhole for the Gulvisa to pass through. It contains an independent power system to supply the energy needs for the module.

A group of fighters can leapfrog by following the first Gulvisa's tunnel, and upon emerging the next Gulivsa creates another and the group moves on.

The module is equipped with a self-destruct system that detonates the fuel reserves should someone attempt to access the module improperly.

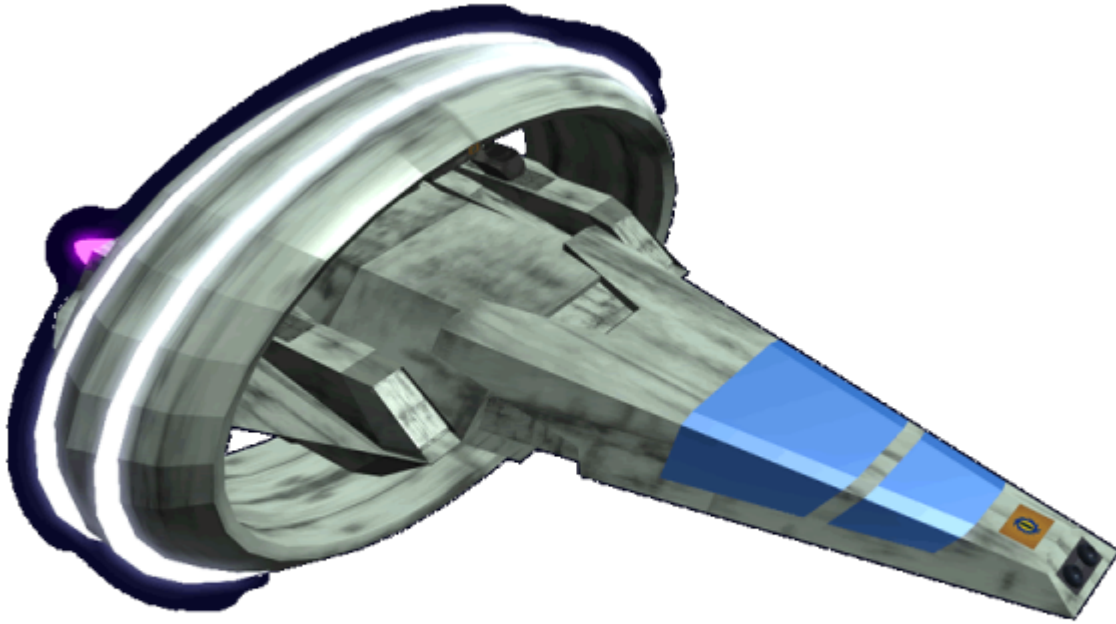


## Appearance

The FTL Module has an oval ring appearance. The two emitter coil rings can be seen running on either side of the ring running parallel. Inside the module is the Gulvisa docking array. The image shows the docking array retracted. The armatures interface through the maintenance panels behind the coil cannons. The field coils are grey when deactivated, and glow a pale white when active.

## History

The FTL Tunnel Drive Module development began in early [755 CY](#). It developed because of concerns about getting fighters rapidly where needed. With the increase in clan territory, the watcher stations were insufficient for delivery. The base design was from one used long ago but updated to work with the [HS-AF1-1c Meqpâ'a Gulvisa \(Prowler Fighter\)](#). Prototypes were tested later in the year and then a splinter project was begun to develop a second module [HS-AF1-P756/01 Meqpâ'a Gulvisa Tinvyoma Piatypedá Module](#) for use near [Star Army of Yamatai](#) vessels. Initial testing showed that the Gulvisa's standard sensors were insufficient for safe tunneling. So a Gravimetric Sensor was added.



## Statistical Data

There section provides stats for the module itself and the performance it provides for the Gulvisa.

### General

- Class: Tunnel Drive
- Nomenclature: HS-AF1-P756/00
- Type: Propulsion
- Designers: [Otâmovi Wiy Jael \(Silver Moon Sect\)](#)
- Manufacturer: [Otâmovi Wiy Jael \(Silver Moon Sect\)](#) on [Poku Movi Vamâqi \(Clan Void Berth\)](#)

### Crew and Accommodations

- Crew: N/A

### Dimensions

- Length: 11.5 meters ( 8.2 feet)

- Width: 9.75 meters ( 31.98 feet)
- Height: 4.75 meters ( 15.58 feet)

## Propulsion and Range

### Speeds

This section provides the speed the module can transport the Gulvisa.

- [Tinvyoma Movidoanor \(Tunnel Drive\)](#) \* **Class A+ (Charge time: 30 min Mouth: 25 meters Distance: 5 LY) === Durability and Maintenance ===** Service Lifespan: Estimated 20 years of constant use, possibly longer with refits.

## Module Systems

These are the system within the module.

### HS-AF1-P756/00 Armor Construction

The FTP Module uses a frame constructed of [Mâqitua \(Light Metal\)](#), and is plated with [Mâqirây \(Bound Metal\)](#) plating. The pilot pod canopy is [Mâqitua'tomin \(Transparent Light Metal\)](#) which allows the pilot to use visual if necessary.

### HS-AF1-P756/00 Computer

The FTL Module uses a pair of [Jodau Fiqorka \(Module Brain\)](#) for its computer/control system.

### HS-AF1-P756/00 Gravimetric Scanner

The FTL Module is equipped with a [HS-AF1-E72000 - Gravimetric Scanner](#) to expand the Gulvisa's sensor capability.

### Power

#### HS-AF1-P756/00 Primary Power

The FTP Module uses a [Otâmovi Wiy Jael \(Silver Moon Sect\) Âmanus Tyokanorjopa \(Anti-Hydrogen](#)

*Reactor*) to power primary system. It is tied to a *Gean Norjopa (Generator)*

## HS-AF1-P756/00 Secondary Power

The FTL Module uses a pair of *Otâmovi Wiy Jael (Silver Moon Sect) Sumanâ-a Tyokanorjopa (Fusion Reactors)* to provide backup power, each has its own *Gean Norjopa (Generator)*.

## HS-AF1-P756/00 Gravity Shield

The FTL Module is equipped with a *HS-SS1-E739/00 Anoka Udano (Gravity Shield)* to protect the Gulvisa during transit.

## Propulsion

### HS-AF1-P756/00 FTL Tinvyma Movidoanor

The FTL Module uses a compact Class A *Tinvyma Movidoanor (Tunnel Drive)* for propulsion.

### HS-AF1-P756/00 Maneuvering

The FTL Module is equipped with eight pairs of *Otâmovi Wiy Jael (Silver Moon Sect) Gean Vymasa (Ion Thruster)* for attitude control in space.

From:

<https://wiki.starmy.com/> - **STAR ARMY**

Permanent link:

[https://wiki.starmy.com/doku.php?id=faction:hidden\\_sun\\_clan:ships:hs\\_af1\\_p756:00&rev=1572700771](https://wiki.starmy.com/doku.php?id=faction:hidden_sun_clan:ships:hs_af1_p756:00&rev=1572700771)

Last update: **2023/12/21 04:41**

