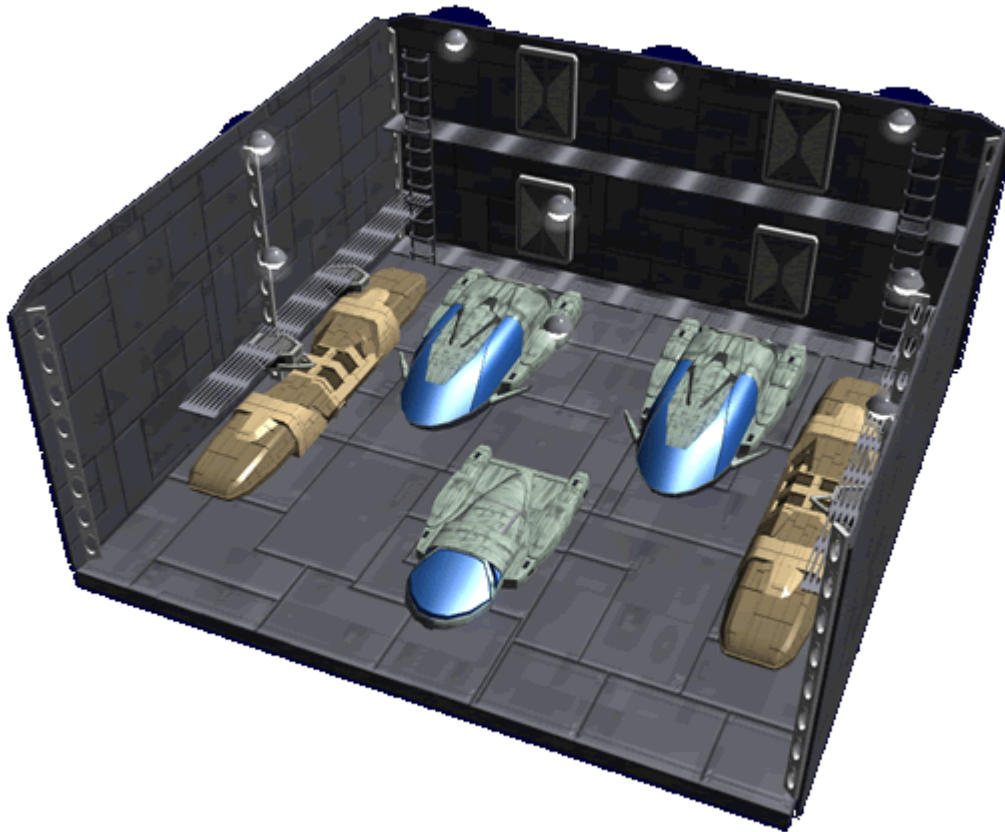


# Rounor Âdortin'sa (Shuttle Bay)

The *Rounor Gulvisa* is one of the standard [Tinsae Fiqorsa \(Starship Compartments\)](#) used by ships of the *Poku Saeruo Degonjo*. It is designed for the launch and recovery of small Clan spacecraft other than *Gulvisa Prowler Fighters*. These bays store ships such as the 'Flitter' class of ships, or [Messenger ships](#). In an emergency, it can be quickly reconfigured to store one or more other [Starships](#) of the Clan.



## Description

The bay is two decks high, is quite wide, and is surrounded by walls constructed of reinforced [Mâqirây \(Bound Metal\)](#). Hull braces composed of [Mâqirây \(Bound Metal\)](#) protrude from the side walls. The walls support several [Tyote Wuny'ta \(Fire Suppression\)](#) ports, and standard [Ibâ'te \(Lighting\)](#) in the ceiling and on the walls keep the space well-lit.

The bottom floor of the bay has equipment storage modules, as well as the equipment necessary to refuel docked shuttlecraft. The bottom floor also has two [workstations](#) and two [standard chairs](#).

Two large clamshell doors open outward to allow the shuttlecraft to enter and exit the bay. Personnel access the bay through [security doors](#).

The bay supports several ladders that allow movement between the two levels, and various lifts are available for moving heavier tools and parts to the different levels of the bay. Ramps can also be deployed and dropped between levels for rolling equipment up and down between levels.

Each shuttlecraft is secured by cradles that rise from the bottom of the bay; these cradles hold the shuttlecraft during maintenance and repair. During space launches, the bay shifts to zero gravity, and the cradles release the ships and recess into the bay's floor.

There are catwalks on either side of the craft which are used by [Pilots](#) to reach their ships. Technical support occupations like the [Bajao'ka Tinsae \(Starship Engineer\)](#) also use these catwalks to service the craft. These catwalks can be moved out of the way when the ships are launched, and brought back out after the ships dock.

## OOC Notes

- Art and article by [Nashoba](#). Updated by [Hollander](#).

From:  
<https://wiki.stararmy.com/> - **STAR ARMY**

Permanent link:  
[https://wiki.stararmy.com/doku.php?id=faction:hidden\\_sun\\_clan:ships:compartments:shuttle\\_bay](https://wiki.stararmy.com/doku.php?id=faction:hidden_sun_clan:ships:compartments:shuttle_bay)

Last update: **2024/03/23 18:44**

