

# Wunder-Class Freighter

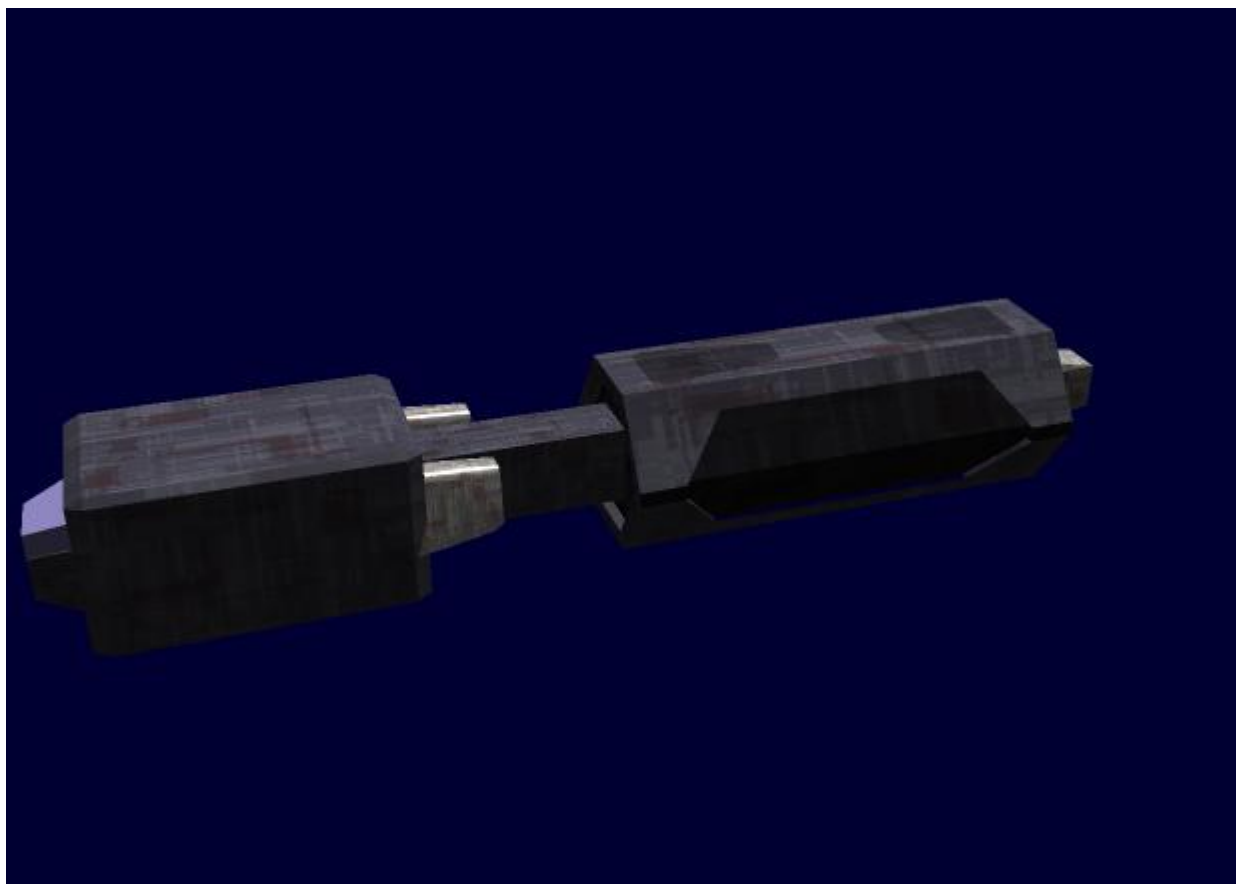
The Wunder-Class Freighter was designed by Dietrich Starkwerk in the Second Quarter of AF 260<sup>1)</sup>. It is used for in-system transportation of goods.

## About the Design

The Wunder-Class Freighter was the second design by Augustus Dietrich, and was made to be a simple and effective transport within a star system. It was designed to carry goods to and from stations/ships and docks via an airlock system. It was also designed to lose its Cargo section in emergencies, whether due to Pirate demands or to unstable goods. It is a civilian ship.

## Appearance

The Wunder-Class Freighter has two sections: The main ship section, and the detachable cargo section with a rectangular passage connecting them.<sup>2)</sup> The main ship section is a rectangular box holding everything necessary for the Ship's running, along with the crew quarters, mess hall, kitchen, and lifesupport systems. At the fore of the main ship section is the bridge, with glass allowing a view of the stars and holding the electronics and control units. The rear cargo section has its own generator both for power and for its engine, and is primarily used for storage.



## History and Background

It was designed by Augustus Dietrich, and is the second starship design by Dietrich Starkwerk. Augustus knew there was a lack of specialized freighter designs in star systems, and created the Wunder-Class as a break-out into the starship market. It was finalized in the Second Quarter of AF 260<sup>3)</sup>.

## Statistics and Performance

### General Information

Class: Freighter DSW-CC-CS01A Designer: [Dietrich Starkwerk](#) Manufacturer: [Abwehran Star Empire](#); [Dietrich Starkwerk](#) Used By: Various Cost: 400,000 Abwehran Credits<sup>4)</sup>

### Crew Capacity

Crew: 10

- ONE Captain
- TWO Operators
- SIX Technicians
- ONE Doctor

Maximum Capacity: With Cargo Section: 400<sup>5)</sup>; Without Cargo Section: 70<sup>6)</sup> Accommodations for 16.

## Dimensions

Length: 200 Meters With Cargo Section, 75 Meters Without Width: 50 Meters Height: 40 Meters Decks: 4 (Three at 4 Meters, One at a width of 2 Meters, 4th Deck<sup>7)</sup> is 35 Meters high, 47 Meters Wide, and 125 Meters Long.)

## Propulsion and Range

Sublight Speed: .18C

- [Civilian Fusion Engine](#)

FTL Speed: None.

## Damage Capacity

SP: 20

- Armor: 8

Shield: 12 SSP

- [Civilian Hard Bubble Shield](#)

(See [Damage Rating \(Version 3\) Guidelines](#))

## Inside the Ship

The standard Wunder-Class Freighter has FOUR decks: Three at 4 Meters, One at a width of 2 Meters<sup>8)</sup>, 4th Deck<sup>9)</sup> is 35 Meters high, 47 Meters Wide, and 125 Meters Long

## Compartment and Deck Listings

DECK ONE<sup>10)</sup>

- [Abwehran Standard Shuttle Bay<sup>11\)</sup>](#)
- [Standard Small Warship Bridge<sup>12\)</sup>](#)
- [Shield Generator Room](#)
- [Solar Battery Room](#)
- [Environmental Room](#)
- [Standard Reactor Room](#)

#### DECK TWO<sup>13)</sup>

- [Abwehran Standard Barrack-style Quarters](#)
- [Abwehran Standard Kitchen](#)
- [Standard Enlisted Mess Hall<sup>14\)</sup>](#)
- [Abwehran Standard Medical Bay](#)
- [Standard Airlock<sup>15\)</sup>](#)
- [Abwehran Standard Laundry Room](#)
- [Standard Computer Center](#)

#### DECK THREE<sup>16)</sup>

#### DECK FOUR

- [Standard Reactor Room](#)
- [Standard Engine Room](#)
- [Auxiliary Environmental Room](#)
- [Standard Abwehran Cargo Hold](#)
- [Standard Airlock<sup>17\)</sup>](#)

## Ship Systems

### Hull

- [Civilian Hull Composition](#)

### Airlocks and Elevators

- TWO [Standard Airlock](#)
- TWO Elevators between Deck One and Deck Two

### Computers and Electronics

- [CU-23](#)
- [Civilian Subspace](#)
- [Radio](#)

- [Civilian Radar](#)

## Emergency Systems

- Four Escape Pods<sup>18)</sup>

## Lifesupport

- [Artificial Photosynthetic Life Support System](#)<sup>19)</sup>
- [Recycling and Filtration System](#)<sup>20)</sup>

## Power and Shields

- ONE [D-D Main Fusion Reactor](#)
- ONE [D-H3 Secondary Fusion Reactor](#)
- One Full [Solar Battery Room](#)
- [Civilian Hard Bubble Shield](#)

## Propulsion

- TWO [Civilian Fusion Engine](#)<sup>21)</sup>

## Vehicle Compliment

- ONE [Schiffchen 1B](#)

1) 3)

YE 32

2)

Detached only in emergencies.

4)

133,333 KS

5) 6)

Extremely Cramped

7) 9)

Cargo Section

8)

Passage between sections

10)

Top Deck of the Main Ship section

11)

Small, one civilian shuttle and one space open for another shuttle. Very small.

12)

Edited to civilian standards: One Astrogator seat, One Helmsman seat, and one Captain's seat.

Communications, sensors, etc. are all split between them equally. One escape pod.

13)

Bottom Deck of the Main Ship section

14)

Doubles as lounge.

15) 17)

Port-Side

16)

Passage between sections.

18)

One in Cargo Section

19)

Main Ship Section; Provides lifesupport to Cargo Section when attached.

20)

Cargo Section; Only when detached.

21)

Only one in use at any time.

From:

<https://wiki.stararmy.com/> - **STAR ARMY**

Permanent link:

[https://wiki.stararmy.com/doku.php?id=faction:abwehran\\_star\\_empire:technology:spacecraft:wunder\\_class\\_freighter](https://wiki.stararmy.com/doku.php?id=faction:abwehran_star_empire:technology:spacecraft:wunder_class_freighter)

Last update: **2023/12/21 05:25**

