

Asuga-Class Tug

An Automated Logistics Tug produced by [Yugumo Corporation](#) for the [Star Army of Yamatai](#) in [YE 42](#).



A Tow To Safety

The Asuga-Class Tug was designed to serve the logistics needs of the [Star Army of Yamatai](#). In [YE 42](#), with the [Kuvexian War](#) in full swing, the number of damaged and wrecked ships was at an all-time high. The Asuga-Class, which had originally been conceived as a freight hauler for the [Yugumo Corporation](#), was redesigned and repurposed as a logistics tug. The large ship is mainly a massive engine assembly that can capture damaged or disabled ships and tug them to safety. The tug is automated under [Escort Integrated Electronics System \(EIES\)](#), which eliminates the need for a crew.

Appearance of The Asuga Class

The Asuga is a wide-bodied hulk vessel that is predominately engines. It is designed to tow ships that are much larger than itself; or work in teams to haul a large ship such as the [Sharie-class Battleship](#). The Four Drive Pods are attached on adjustable pylons to the sphere-shaped heart of the vessel which sits to the aft section of the structure which allows the ship to telescopically widen or contract it's grip on a damaged or disable ship it is required to tow.

The Asuga is purely a tug ship, unlike the aged [Anri-Class Deep-Space Repair Vessel](#), it is tooled to grab

an asset vessel quickly and tug it out of harm's way and to a base as quickly as possible rather than to commit to repairs in the field.

They are often seen around [Zodiac-Class Star Fortress](#) and other installations.

Secondary Uses

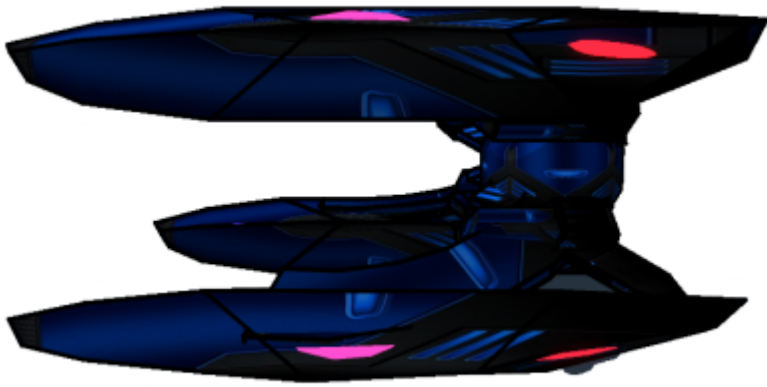
The Tug is also able to:

- Haul Large and Huge [Standard Starship Cargo Containers](#)
- Remove Space Junk from shipping lanes.
- Haul small asteroids.
- Tug Disabled and Captured Enemy Vessels.

Statistics and Performance

The Asuga is built with power and strength in mind and is designed to grab and go.





General Statistics

- Class: [Yu-L1-1A](#)
- Type: Heavy Tug
- Designers: [Yugumo Corporation](#)
- Manufacturer: [Yugumo Corporation](#), [Jiyuu System](#)
- Fielded by: [Yugumo Corporation](#), [Star Army of Yamatai](#) and [Yamatai Star Empire](#)
- Production: On Demand.
- Production Notes: Currently accepting orders from the [Star Army of Yamatai](#)
- Sources: [Star Army Military Industrial Complex](#)
- Price: Military Contract

Passengers

- **Crew:** Automated under [Escort Integrated Electronics System \(EIES\)](#), no operator is required.
- **Maximum Capacity:** There are no accommodations. About 200 people can fit aboard in an emergency, but the ship would be extremely cramped.

Dimensions

- Length: 600 meters
- Width (Contracted): 400 meters
- Width (Extended): 705 meters
- Height: 500 meters
- Decks (Sphere): Most of the Sphere is devoted to Systems Space. There are 10 Shelter Decks that can be used in an emergency.

Propulsion and Range

In compliance with the [Star Army of Yamatai Starship Speeds](#):

- [Continuum Distortion Drive](#): 6,000c (tug-mode) and 10,500c (unattached)

- Hyperspace Fold Drive: 394,470c (0.75 light-years per minute)
- Sublight Engines: 0.25c (tug-mode) and 0.375c (unattached)
- Lifespan: 50 Years
- Refit Cycle: Every 5 Years

Damage Capacity

See [Damage Rating \(Version 3\)](#) for an explanation of the damage system.

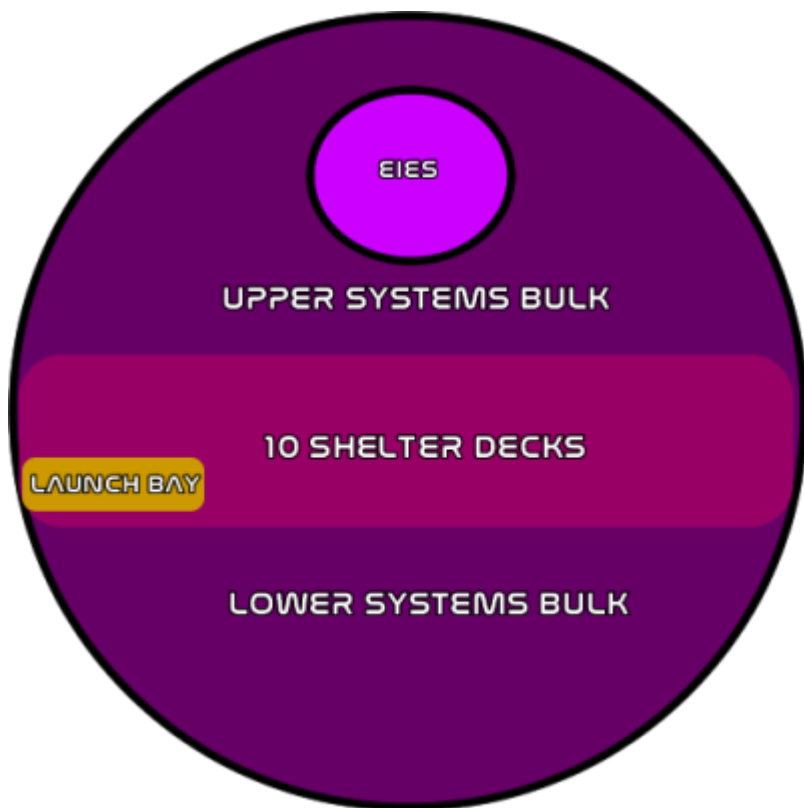
- Tier: 12

Inside The Ship

The Asuga is not designed to carry passengers. The main sphere of the ship houses the ship's systems in its upper and lower systems bulk. Ten decks of emergency shelters have been included in case there is an evacuation situation.

Deck Layout

The Asuga's deck layout is below.



Compartments

The ten shelter decks of the Asuga-Class Tug are for emergency use only.

Shelter Compartments

The Ten shelter decks have:

- [Standard Star Army Infantry Squad Cabin](#)
- [Standard Star Army Toilet](#)
- [Standard Star Army Crew Shower](#)
- [Standard Star Army Dining Hall](#)
- [Standard Star Army Laundry Room](#)
- [Standard Medical Center](#)

Emergency Bridge

The Asuga-Class has a small [Star Army Internal Small Starship Bridge, Type 40](#) for use during an emergency.

Launch Bay

The combined launch/[Standard Star Army Shuttle Bay](#) is for receiving evacuation shuttles and craft in an emergency when the ship's shelter decks are in use.

Systems

The Asuga-Class has many systems, all of which are fully automated. Systems can be accessed or repaired at a Star Fortress or Starbase.

Armored Hull

The hull of the Asuga-class is made of a mix of [Zesuaium](#), [Yamataium](#), and [Xiulurium](#). Most interior areas are coated in [Yarvex](#).

Integrated Electronics System

The [Escort Integrated Electronics System \(EIES\)](#) is the primary computer, communications and sensor

suite of the Asuga-class. It is capable of creating and maintaining Nekovalkyrja sprites, deploying defensive measures, seamless PANTHEON integration, [electronic warfare](#), and, more.

Communications

The Asuga is equipped with a [Star Army Standard Communications Array](#).

Power Systems

The Asuga Tug has eight high-output [Aether Generators](#). Due to the power needed for the tug's systems when it is in tug-mode, the design team fit as many generators as was feasible into the ship.

Propulsion Systems

The Asuga is equipped with four heavy-duty [Turbo Aether Plasma Drive](#) engines, specially designed for hauling. It is also equipped with four Tsunami II [Mizu II Series Continuum Distortion Drives](#) and is capable of extending its distortion field around other ships. Maneuvering Thrusters ([ion thrusters](#)) are used primarily attitude adjustment, docking and station keeping.

Combined Field System

The [Mizu II Series Continuum Distortion Drives](#) have built in [Combined Field Systems](#).



The ship is equipped with the [Yumeoibito Hyperspace Fold Drive](#) built by the [Yugumo Corporation](#).

Life Support and Emergency Systems

The ten emergency shelter decks on the Asuga-Class Tug have [Star Army Standard Life Support Systems](#) and [Star Army Standard Starship Emergency Systems](#).

Graviton Beam Arrays

The Asuga is equipped with sixteen [KFY Graviton Beam Projector](#) to assist with grab and tow operations.

Weapons

The Asuga has very few weapons as that it plays a primary support role. It is not designed for combat.

- 4 Tier 11 ([Medium Anti-Starship](#)) [Ke-S3-W2901 Positron Accelerator Cannons](#) (1 on each nacelle pod)
- 4 Tier 8 ([Medium Anti-Mecha](#)) [Turbo Aether Turrets](#) (1 on each nacelle pod)

In Roleplay Mentions of the Asuga-Class Tug

Here are some mentions about this vessel in roleplay:

- [Resolutions of The Ghost - Episode 4:Stir the Ashes Here Comes the Fire](#) - Asuga-Class Tugs are mentioned in operation at [Gemini Star Fortress](#) while the [First Expeditionary Fleet](#) is launching new ships.
- [Resolutions of The Ghost - Episode 4: Launch of the YSS Tokyo](#) - Asuga-Class Tugs assist with the maiden launch of the [YSS Tokyo](#).
- [17th Pilots Unite \(Social Arrival\)](#) - The Tugs are mentioned again when the launch of the [YSS Tokyo](#) is confirmed.

OOC Notes

[Andrew](#) created this article on 2020/01/31 02:29.

- [Andrew's Star Army Will](#)
- Art was created by [Andrew](#) using DOGA and Fireworks MX.

Approval Thread

Products & Items Database	
Product Categories	starships
Product Name	Asuga-Class Tug
Nomenclature	Yu-L1-1A
Manufacturer	Yugumo Corporation , Yugumo Fleetworks
Year Released	YE 42
Price (KS)	600 ,000.00 KS
Star Army Logistics	
Supply Classification	Class A - STARSHIPS
First Used	YE 42
Last Review	YE 42

Last
update:
2023/12/21 04:21 corp:yugumo_corporation:ships:asuga-class_tug https://wiki.stararmy.com/doku.php?id=corp:yugumo_corporation:ships:asuga-class_tug

From:
<https://wiki.stararmy.com/> - **STAR ARMY**

Permanent link:
https://wiki.stararmy.com/doku.php?id=corp:yugumo_corporation:ships:asuga-class_tug

Last update: **2023/12/21 04:21**

