

Yugumo Standard Combined Launch Bay

The Yugumo Standard Combined Launch Bay is a starship interior developed by the [Yugumo Corporation](#) in [YE 45](#).

History and Background

In [YE 45](#), the [Yugumo Corporation](#)'s [Yugumo Fleetworks](#) division sought to continue the standardization of its interior modules for the ships it produced. [Yugumo Fleetworks](#) has preferred a combined launch bay approach in their previous designs, rather than having separate power armor facilities they combine small craft and power armor launch and collection systems into one place. The Combined Launch Bay was inspired by the [Multi-Purpose Launch Bays](#) utilized on the [Takumi-Class Expeditionary Command Cruiser](#).

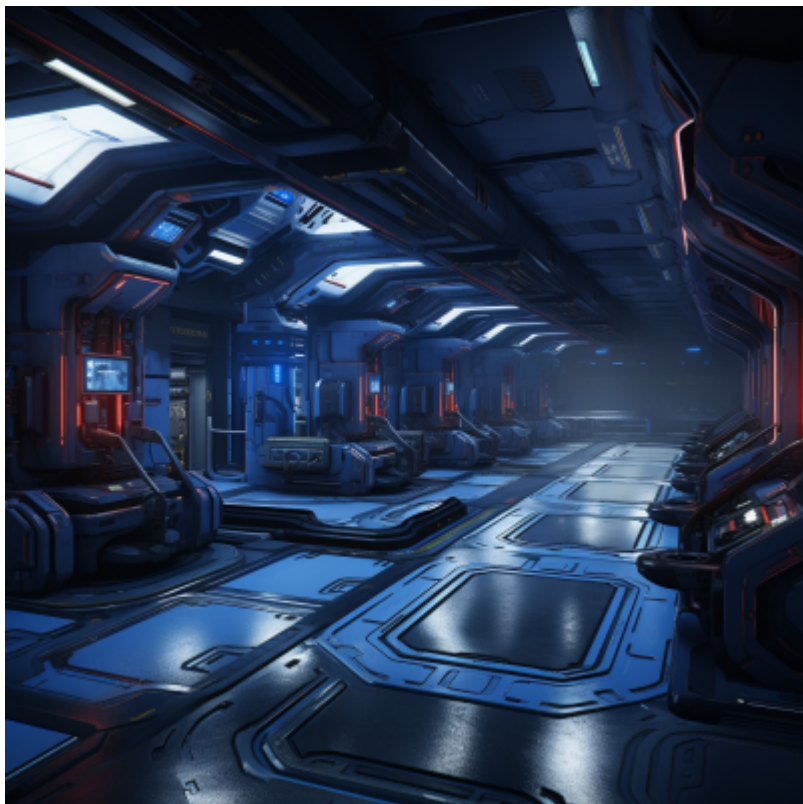
Product Information

The product information for the Yugumo Standard Combined Launch Bay.

Yugumo Standard Combined Launch Bay	
Year of Creation	YE 45
Designer	Yugumo Fleetworks
Nomenclature	Type 45
Manufacturer	Yugumo Fleetworks
Fielded by	Yugumo Corporation , Yugumo Merchant Spacy
Availability	Mass Production

Combined Launch Bay

The Combined Launch Bay is a vital and well-organized section of a [Yugumo Fleetworks](#) designs, It facilitates the deployment and retrieval of various small craft, drones, and equipment, including power armor like the [Yoru no Tenshi 'Tenshi II' Light Mechanized Power Armor](#). The launch bay is generally strategically located within the vessel, typically toward the aft and/or ventral positions for ease of access and operational efficiency.



Launch bays vary in size and position depending on the starship class, but they all have the same general setup and systems in place.

Spacious Enclosure

The launch bay is a cavernous, well-lit space with high ceilings to accommodate a variety of vehicles and equipment. The walls are constructed from durable, heat-resistant [polymer](#) coated [Durandium Alloy](#) and other materials to withstand the stresses of launch and reentry.

Floor Markings

The bay floor features painted and [laser diode](#) illuminated markings to guide the positioning of small craft and equipment, ensuring precise alignment during launch and recovery operations.

Graviton Systems

Several [graviton beam projectors](#) are positioned to assist with troubled landings, as well as maintenance of small craft. These also serve as integrated dampening systems to absorb the shock of returning small craft and power armors, ensuring safe and controlled landings.

Storage Racks for Power Armor

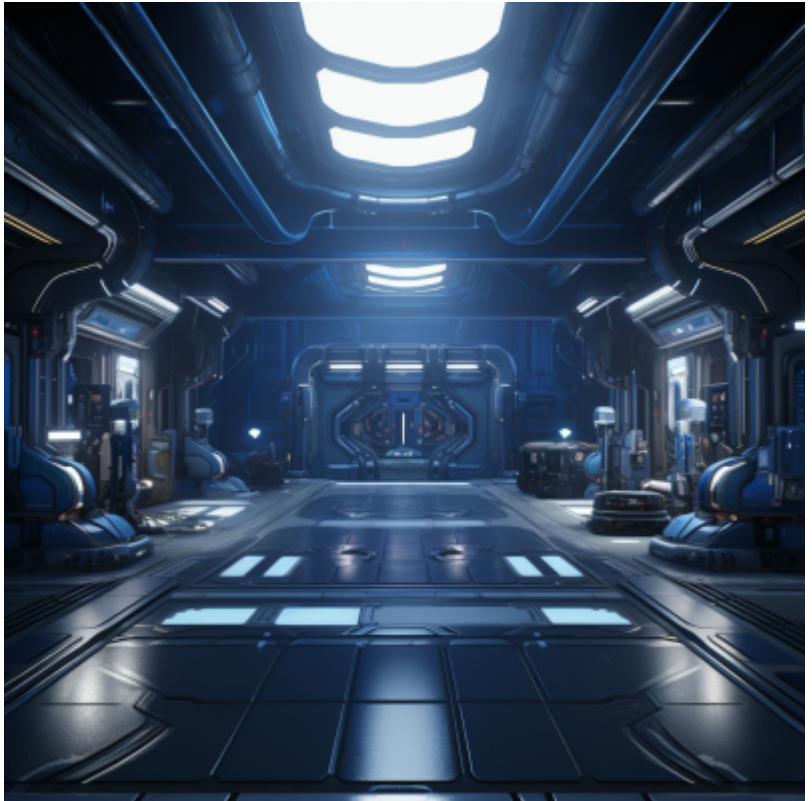
Adjacent to the launch rails, there are specialized storage racks for [Yoru no Tenshi 'Tenshi II' Light Mechanized Power Armor](#). These racks are designed to securely hold and charge the suits while keeping them easily accessible for the crew. The power armor racks feature locking mechanisms to prevent accidental releases during turbulence or sudden movements of the ship. Crew members can easily unlock and retrieve their suits when needed.

Charging Stations

Integrated charging stations within the racks provide power to the stored equipment and tools, ensuring that they are always ready for use. The charging process can be automated by [KAIMON](#) or manually initiated by crew members. The bays are often equipped with [Yugumo Standard Anthroform Drone Berth](#) for recharging [KAIMON/Ascendant Consort](#) units.

Maintenance Workstations

Along the walls of the launch bay, there are maintenance workstations equipped with tools and diagnostic equipment to perform routine inspections and repairs on both small craft and power armor.



Personnel Access

Crew access doors and airlocks are strategically placed around the launch bay, allowing personnel to enter and exit for maintenance, pre-flight checks, and power armor retrieval.

Safety Systems

Robust safety systems, including [Yugumo Standard Fire-Fighting Equipment and Systems](#), emergency lighting, and radiation shielding, are integrated throughout the launch bay to protect crew members and equipment during emergencies.

Environmental Controls

The launch bay maintains a [controlled environment](#), with temperature, humidity, and atmospheric pressure regulated to suit the needs of both equipment and personnel. A graviton forcefield maintains the atmosphere in the bay when the doors are open, which selectively allows the entry and exit of small craft and power armor without the need to decompress the compartment.

OOC Notes

[Andrew](#) created this article on 2023/09/22 10:55.

This article was approved by [Wes](#) on 2023/10/01.¹⁾

Written with the assistance of Chat GPT. Art done in Midjourney by [Andrew](#).

Products & Items Database	
Product Categories	interiors
Product Name	Yugumo Standard Combined Launch Bay
Nomenclature	Type 45
Manufacturer	Yugumo Fleetworks, Yugumo Corporation
Year Released	YE 45

¹⁾

<https://stararmy.com/roleplay-forum/threads/tengumo-class-space-station.70964/#post-440922>

From:
<https://wiki.stararmy.com/> - **STAR ARMY**

Permanent link:
https://wiki.stararmy.com/doku.php?id=corp:yugumo_corporation:interiors:standard_combined_launch_bay

Last update: **2023/12/21 04:21**

