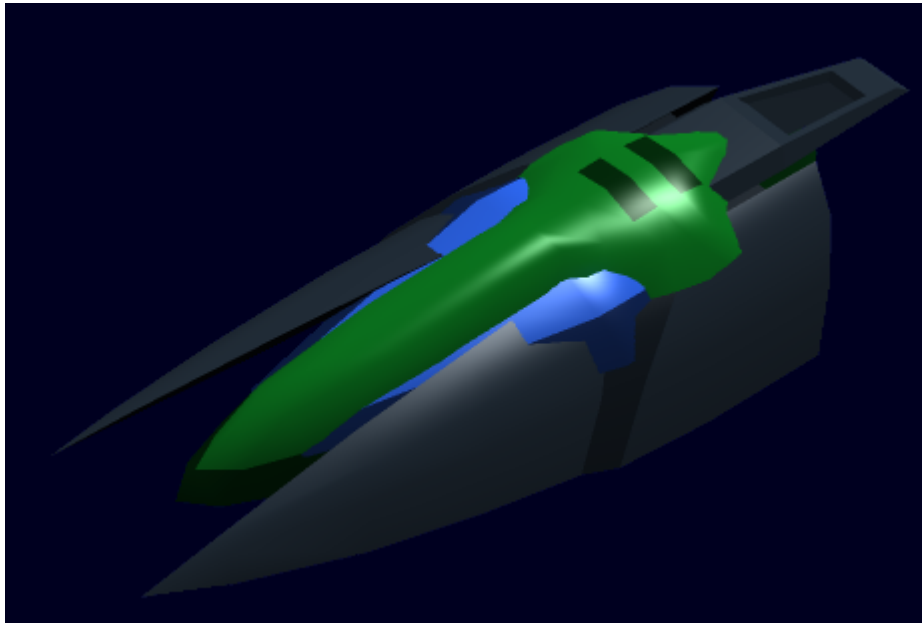


Targa Shield



The Targa shield is a medium-sized solid shield created by [Origin Industries](#) in YE 31 for the [OI-M1-2A Enhanced Ashigaru "Kirin"](#) Powered Frame. It is held onto the left forearm by metal clamps, and has firing ports for the built in weapons on the frame's forearm. The Targa shield is made from [Nerimium](#). The shield itself covers all of the lower left arm, and can be moved to protect the torso and lower body of the frame. The Targa is similar to a buckler in its use. Dimensions are 4 meters by 1.5 meters. The shield is fairly light, meant to add protection to a mobile armor, but is still bulky and can get in the way during a fight.

Structural Points(Mecha Scale): 7

From:

<https://wiki.stararmy.com/> - **STAR ARMY**

Permanent link:

<https://wiki.stararmy.com/doku.php?id=corp:origin:targa>

Last update: **2023/12/21 00:58**

