

OI-M5-W3401 LANCE

Designed in [YE 34](#) by [Origin Industries](#), OI-M5-W3401 Light Assault Neutrino Cannon Emitter, or LANCE, is a small support drone created to assist the [M5](#) and [M3](#) Series Frames. It replaced the older [OI-01-1A Kirin Feather](#) when it went into production in [YE 36](#)

About the LANCE

The LANCE is a simplified, high-maneuverability drone created in order to compliment the [Knight powered Frame](#). Made of simple, readily available parts and materials, it is an inexpensive, disposable drone which can help multiply a frame's battlefield presence by extending its maximum range and multiplying its possible angles of attack.

Statistical Information

Government: Various Organization: [Origin Industries](#) Type: Support Combat Drone **Designation:** OI-M5-W3401 Designer: Origin Armor Works Manufacturer: [Origin Industries](#)

Appearance: The LANCE consists of a somewhat egg-shaped main body covered in thrusters. the rear of the LANCE has a large main thruster, while the front is dominated by the Neutrino Cannon.



Width:

.4 meters Length: 1.4 meters Height: .4 meters

Speeds

Air speed: Mach 5 **Zero Atmosphere:** .3c

Range: up to 300 KM away from the parent unit. **Operational Time:** 4 Hours

Damage Capacity

See [Damage Rating \(Version 3\)](#) for an explanation of the damage system.


Hull: 5 ADR Shields: 1(1) ADR

Weapons Systems

The LANCE has two means of attack: a Laser Cutting Cannon, or physically, via ramming.

(1) Light Neutrino Cannon

Purpose: Anti-Armor **Location:** Nose of Drone **Damage:** Tier 5 or Tier 6, Medium Anti-Armor or Heavy

Anti-Armor ( **Fix Me!**: Staff needs to determine which) Range: effectively unlimited, but not effective at more than a few light seconds. Rate of Fire: Two pulses a second Muzzle Velocity: .95c Muzzle Flash: A flash of white light **Notes:** The Neutrino Cannon is unlikely to harm soft targets, but can cause Fission in armored targets due to the heavier particles present, which the Neutrinos interact with much more strongly.

Suicide Rush

As a last resort, the drone may be rammed into a target in order to do damage. Depending on the state of the drone, it's remaining power, and how fast it is moving, this may have differing effects. Needless to say, this is a one-time use, and damage is never consistent.

Systems Descriptions

The LANCE has Very standard systems, making it cheap and reliable.

Hull and Hull Integrated Systems

The LANCE is comprised almost entirely of [Durandium Alloy](#), which was chosen for its lightness, durability, strength, and cost-effectiveness.

Navigational Shielding

The LANCE Feather merely has a simple Navigational shield, to protect it from space hazards.

Location:Main body **Shield Points:** SP 1 (1) **Runtime** Operative as long as power is available

Main Power and Propulsion

The LANCE is powered by a single [BURST](#) reactor. This reactor directly powers all functions of the LANCE, including the thrusters, computer, and Cannon

Electronics

The LANCE uses a simplified version of the [Pawn](#) system, slaved to the controlling Frame's computer. The LANCE is controlled either by the Pilot, Copilot, AI, or a combination of these. All sensor data is relayed back to the parent frame's AI. The LANCE can be set into a multitude of formations, determined by the pilot or Copilot.

Targeting control

The LANCE's AI has a targeting control system that can give detailed information (Heading, velocity, size, ship type, energy signatures) on ten targets, and relay the information back to its parent frame.

Communications

Laser

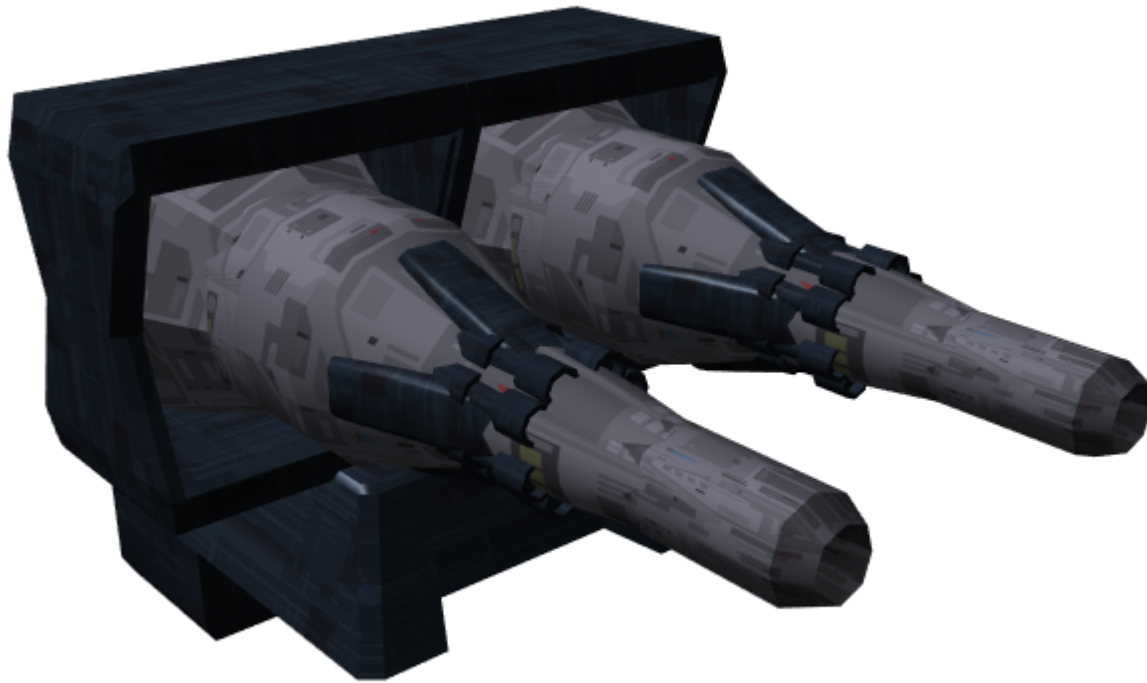
For close-range transmissions, it is more difficult for the enemy to intercept, because they have to be in the area of the beam. Also limited to light-speed.

Radio

Full spectrum, Dual-Modulation, range theoretically unlimited except by interference. Practical range is short, since the waves only travel at light-speed.

LANCE Racks

The LANCE Racks are a simple system of racks which mount to the shoulders of Armored Frames. Each rack can hold up to Two LANCE drones, which means a Frame can carry up to a total of Four LANCE Drones in Racks.



LANCEwings

The LANCEwings are a set of wing-shaped Binders which attach to the back of Armored frames. Each LANCEwing can hold up to four LANCE drones, giving a set of LANCEwings a total capacity of eight Drones in the Wings. As Binders, LANCEwings are also semi-articulated, with a powered universal joint where the unit attaches to the frame. LANCEwings increase maneuverability in space and, when the Drones are docked, they allow a mild speed boost.



From:
<https://wiki.stararmy.com/> - **STAR ARMY**

Permanent link:
<https://wiki.stararmy.com/doku.php?id=corp:origin:oi-m5-w3401>

Last update: **2023/12/21 00:58**

