

Nova Series Airbikes

[Origin's](#) Nova series of Airbikes were created in [YE 35](#), to provide high-quality, low-cost, and economical Airbikes to the public.

About

The Nova series, based off the higher performance, higher-cost [Type 32 Airbike](#), are made for both the economically-minded commuter, as well as the racing fanatic. Low frills, no-nonsense bikes, they offer performance on a budget, and are actually priced to be affordable to even the newest recruit, coming in at the same price as a soldier's joining bonus.

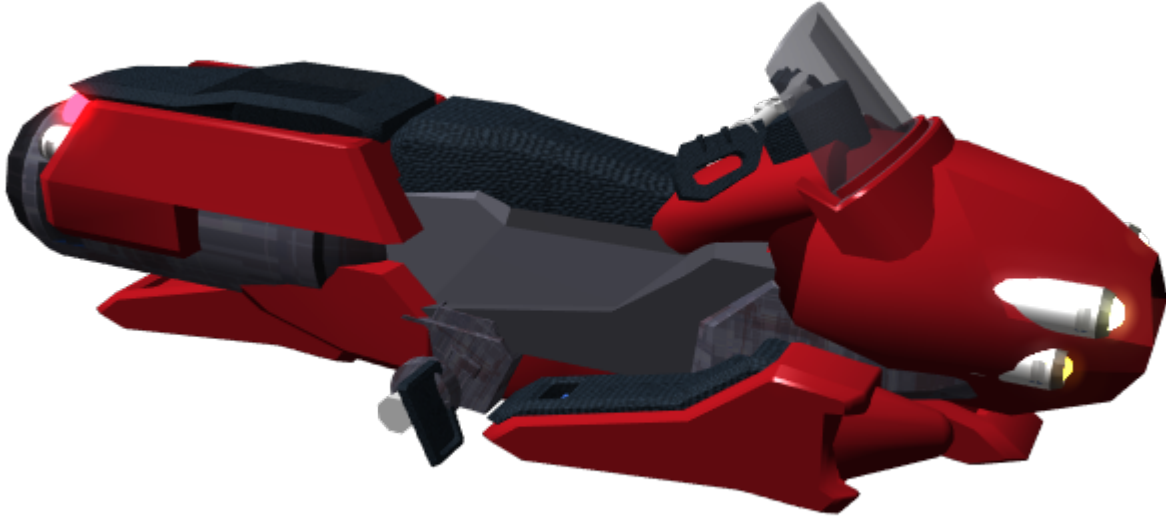
Statistics and Performance

- **Organizations Using This Vehicle:** Various
- Type: Racing commuting
- Class: Airbike
- Nomenclature: OI-T35-1A, 1B
- Designer: [Origin Industries](#)
- Manufacturer: [Origin Industries](#)
- Production: Mass-produced
- **Riders:** 1
- Maximum Capacity: 2
- **Max load:** 230 Kilograms
- **Price:** 3,000 KS

Appearance: The two models of Nova airbike are very similar in appearance. Both have an identical, somewhat egg-shaped cowling with a divided scoop in the front, which is flanked by a set of lights. an upright windscreen is preceded by controls and the instrument cluster, which are located atop the gas tank. Behind this is the seat, which sits atop the majority of the components, though these are hidden behind covers. Behind the front seat is a second, passenger seat, which sits atop a framework protecting it from the single fusion turbine that provides thrust for the bike.

Colors: The Nova Airbikes can be ordered in nearly any color for an extra 25 KS. Standard colors are Black, Origin blue, Origin green, and Cherry red.

1A



2A

1A

Dimensions

- Length: 2.1 meters
- Width: .5 meter
- Height: 1 meter

Performance

- **Max Speed:** 1A: 300 KPH, 2A: 275 KPH
- **Max Altitude:** 1,000 feet above 'sea level' (not recommended)
- Lifespan: 5-20 years, depending on care.
- **Maintenance Cycle:** every four months.

Vehicle Systems

Controls

The bike is controlled in two ways: Handlebars, and pedals.

- **Handlebars:** The handlebars control the Bike's direction. By turning the handlebars one way or another, hot gasses are directed through nozzles which blow the hot gas in the opposite direction the bike is turning.
- **Pedals:** The pedals control the throttle and airbrake. The right-hand pedal is the throttle, while the left-hand pedal is the airbrake.

Miscellaneous systems

- **Lights:** The Nova Series has a full set of head and tail lights, allowing it to be flown safely at night, as well as turn signals, so that other vehicles can have some warning as to what the bike is doing.
- **Cargo Box:** behind the rider, above the turbine, is a small box which allows the pilot to carry a small bit of cargo. The top of this box is cushioned, allowing a second rider to sit atop the bike if needed, but this is not normally recommended.

Computers and Electronics

The Nova Series has a basic on-board computer system that regulates the inputs from the rider and creates the desired responses from the bike, as well as helps keep the bikes slightly more stable in flight.

Propulsion and Power

The Nova Series is propelled by a fusion turbine which is powered by a **HONEY BURST** Fusion reactor. The Fuel supply is a Double Fuel supply, located in the upper tank beneath the controls and gauge cluster. The Nova is capable of lasting roughly two weeks of constant operation without need to refuel.

Floataion

When the Nova Series is traveling at speeds below 150 KP/H, it does not create enough lift to remain off the ground. To remedy this, there are several small nozzles in the bottom which blow hot air down towards the ground, keeping the Nova from hitting. Beyond 150 KP/H, the system shuts off and diverts power to the engines for more speed.

From:

<https://wiki.starmy.com/> - **STAR ARMY**

Permanent link:

<https://wiki.starmy.com/doku.php?id=corp:origin:nova>

Last update: **2023/12/21 00:58**

