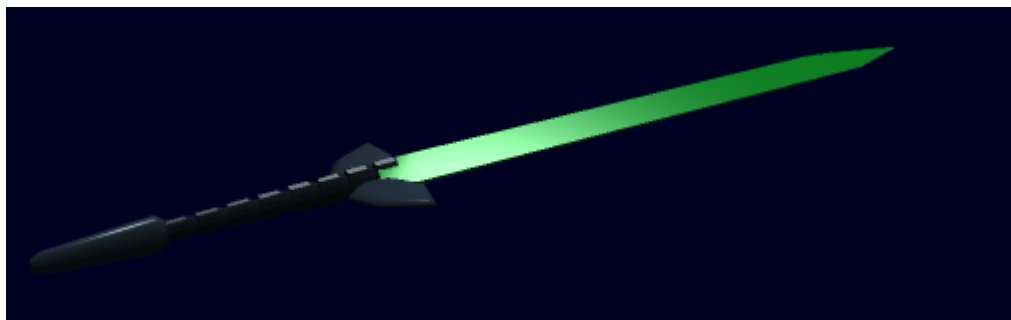


# OI-M1-W3109 Frame Longsword



The [Origin Industries](#) Heated Longsword is a double-edged Powered Frame sized sword, a [YE 31](#) amalgamation of the classic longsword and the Eastern Jian, giving the [M1 Kirin](#) an easily carried melee weapon. The blade of the sword is made from [Nerimium](#). The hilt and pommel of the sword are made from [Durandium Alloy](#) for durability. The Longsword is 6.5 meters long from the tip of the blade to the butt of the pommel. When not in use, The sword is held in a special scabbard that can be hung at a Frame's side.

- **Purpose:** Anti-Mecha
- **Structual Points (Mecha):** 10 SP
- **Damage(Piercing):** Tier 5 or Tier 6, Medium Anti-Armor or Heavy Anti-Armor (



: Staff needs to determine which)

- **Damage(Slashing):** Tier 4, Light Anti-Armor
- Range: 6.5 meters

From:

<https://wiki.stararmy.com/> - **STAR ARMY**

Permanent link:

[https://wiki.stararmy.com/doku.php?id=corp:origin:heat\\_sword](https://wiki.stararmy.com/doku.php?id=corp:origin:heat_sword)

Last update: **2023/12/21 00:58**

