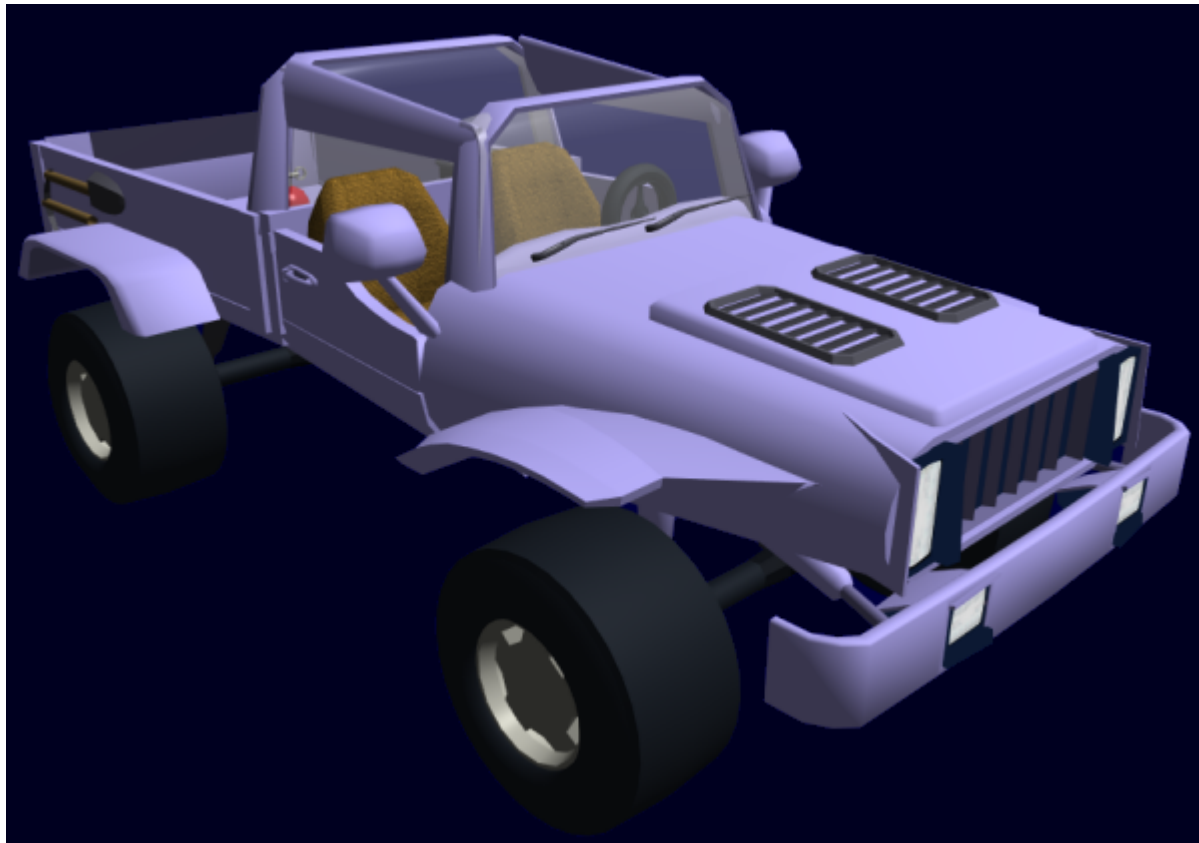


General Purpose Off-Road Vehicle

The GP-ORV is a simple four-wheel drive vehicle, capable of taking two people and their gear just about anywhere on land. It is manufactured by **Origin Motors Corporation**, a branch of [Origin Industries](#).



In [YE 31](#), GP-ORVs entered service in the [Star Army of Yamatai](#) after [Star Army Logistics](#) ordered 10,000 of them for use in the [Second Mishhuvurthyar War](#).

In [YE 41](#), the Star Army's GP-ORVs were retired from Star Army service and transferred to the [Star Army Surplus Store](#) program for resale.

Features

- 4WD
- Floats!
- Travel up to 2 knots in water
- Nearly unlimited range
- Removable hard-top
- [Durandium Alloy](#) construction
- Windshield wipers
- Rear and side view mirrors
- Five-point safety harnesses

- Solid axles for stability

Price

SUV: 5,000KS Truck: 6,000KS

The GP-ORV is available in any color one can name or provide a sample for, at no extra cost. Specific color schemes and patterns may also be requested, but may carry an extra charge (around 50-150 KS depending on the complexity)

Appearance





Details

The GP-ORV is a vehicle aimed at both being a work vehicle for people in backwater places, and a pleasure vehicle for those who don't. It is constructed of light [Durandium Alloy](#) with transparent Durandium windows, making it fairly tough for its size. All lower sections are water-sealed to allow it to

float in the water, and even move around on the surface in calm conditions, albeit rather slowly. Safety systems include a radio that can be used to call for help, and 5-point harnesses to keep occupants in their seats no matter how crazy the terrain is. The cabin is reached via doors on the side which are hinged directly beneath the windshield and swing forward and outward.

Capabilities

Top speed: 150 MPH Range: Limited to land and calm water. Crew: 1 Driver, 1 passenger.
climb/descent: 65% grade

Dimensions

Mass: 3/4 ton (1 ton for truck version) Length: 3 meters (3.6 for truck version) Height: 2.5 Meters



Systems

Power

The GP-ORV is powered by a very small [Aether Generator](#), which runs a much larger sized electric motor, which in turn turns the wheels.

There is also a Fusion powered version, which has a range of around 10,000 miles before needing to be refueled.

Wheels

The tires are made of Silicone rubber with Durandium belting for strength. the wheels these tires are mounted to are made of polished Durandium. The rear wheels jut out past the tires by 3 inches to each side to facilitate movement in water. While moving in water, the front wheels act as rudders.

Communications

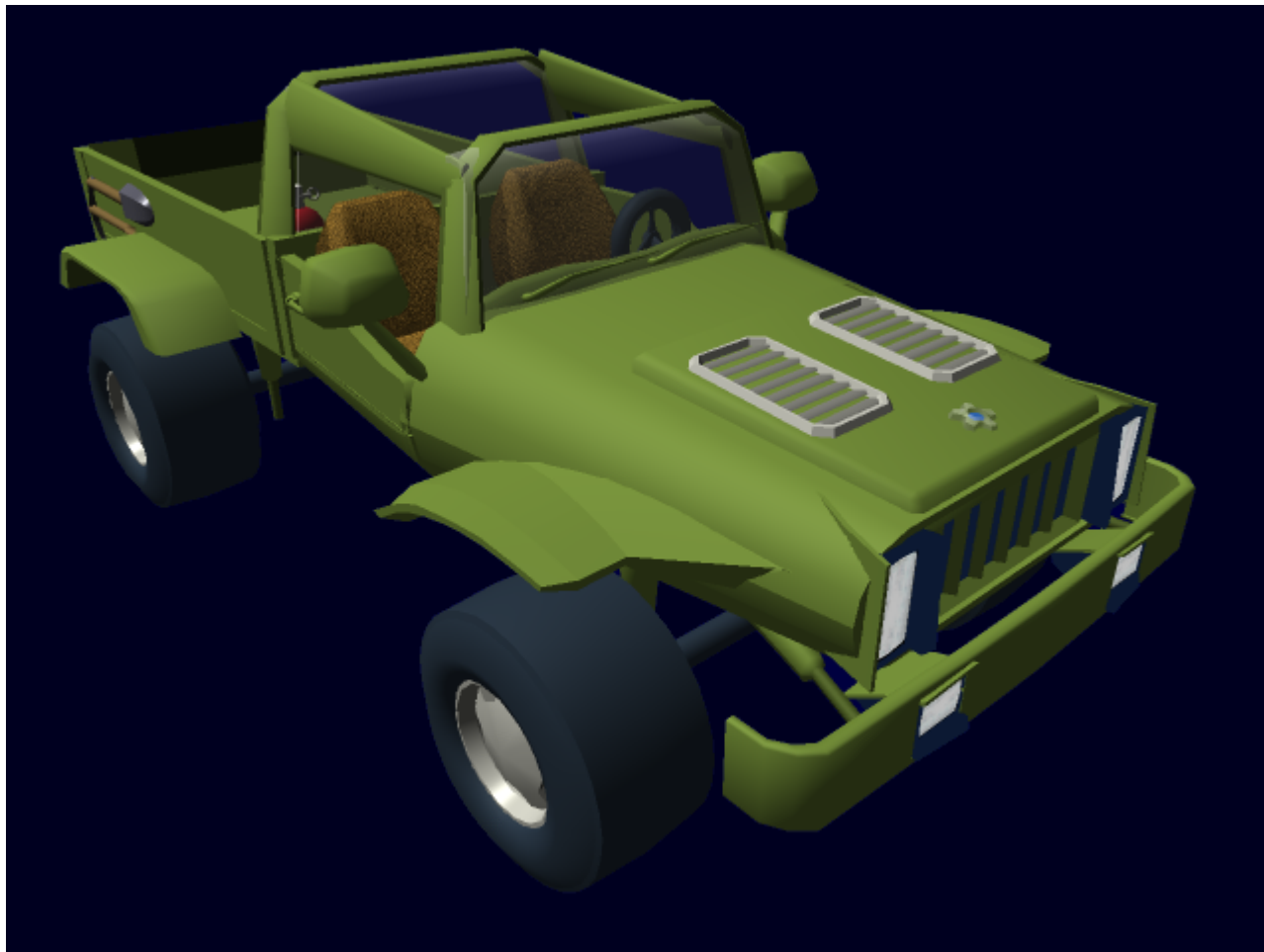
The ORV contains a radio system which allows the user to hear any public channel. It also has a handset which allows them to call for help, or communicate with nearby people.

Storage

The ORV contains a watertight trunk in the rear which has 8 cubic feet of storage, for any and all gear (that fits) to be brought along safely. There are two 1.5 square foot doors that lead into the trunk if only smaller things are needed, or the entire top half swings upward to accommodate larger gear.

Variants

There is also a truck variant that is slightly larger, and can carry more weight, but has slightly reduced 4WD ability



From:
<https://wiki.stararmy.com/> - **STAR ARMY**

Permanent link:
https://wiki.stararmy.com/doku.php?id=corp:origin:gp-orv_jEEP

Last update: **2023/12/21 00:58**

