

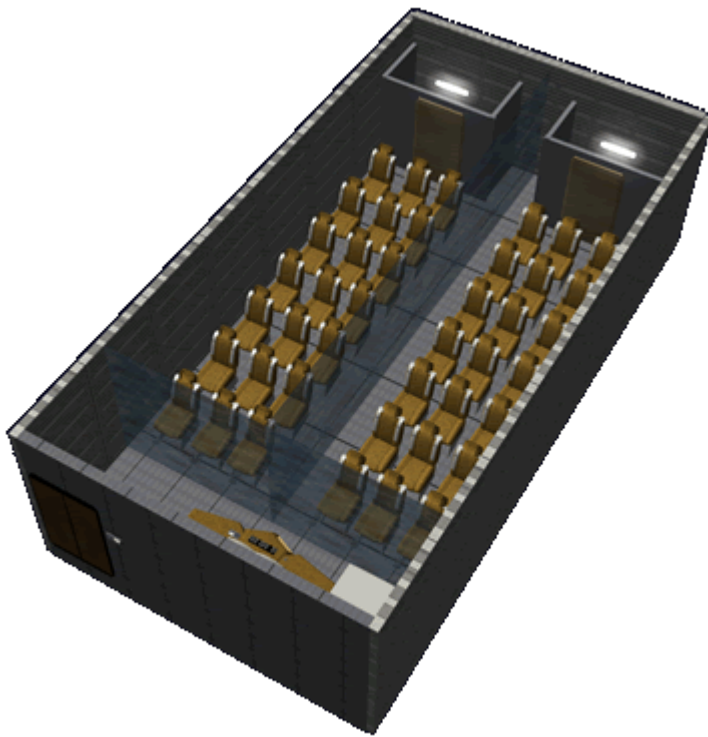
# GE-E1-M3407 Prisoner (MCS)

The GS-E1-M3407 MCS is an optional module made for use in the [Ge-E1-1a - Tenba-Class Transporter](#) in [YE 34](#).

## General

Class: Passenger (Capacity of 42) Nomenclature: Ge-E1-M3407 Type: Mission Configurable Section  
Designers: [Tamahagane Corporation R&D](#) Manufacturer: [Geshrinari Shipyards](#) **Organizations using:**  
[Star Army of Yamatai](#)

The Prisoner MCS allows the *Tenba* to carry forty-two prisoners safely and securely. It has two dedicated restrooms; which have surveillance cameras to allow the guards to monitor the activity in the room. A drink dispenser and a [Geshrinari Work Table](#) to supply meals and entertainment. The MCS has seats covered in acceleration foam, that recline for sleeping.



## Security Measures

There are isolation force fields that can be deployed to keep the two groups of prisoners separated. For troublesome prisoners, the seats have integrated wrist and ankle restraints. They also include a taser in the restraints in case the prisoner attempts to break free.

From:  
<https://wiki.starmy.com/> - **STAR ARMY**

Permanent link:  
[https://wiki.starmy.com/doku.php?id=corp:geshrinari\\_shipyards:tenba\\_class:gs-e1-m3407&rev=1688822063](https://wiki.starmy.com/doku.php?id=corp:geshrinari_shipyards:tenba_class:gs-e1-m3407&rev=1688822063)

Last update: **2023/12/21 01:15**

