

RDRS Ge-L6-2a - Jihi Class Freighter

RDRS

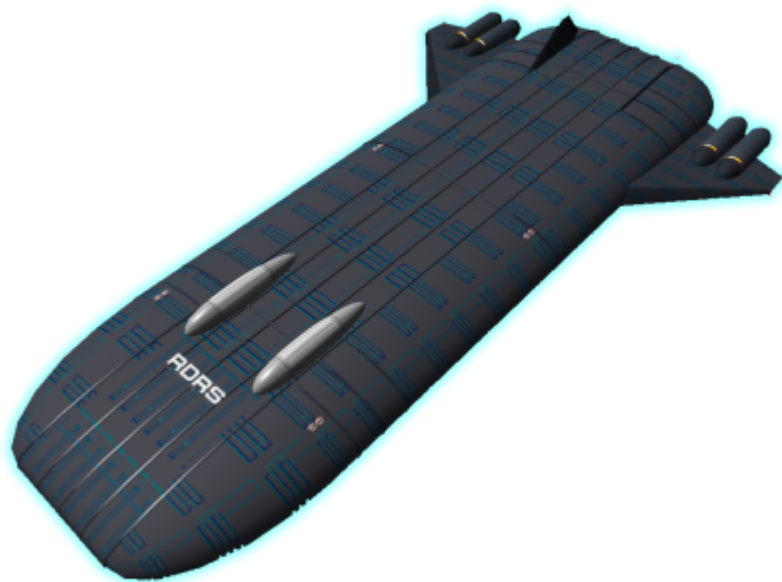
The *Ge-L6-2a* is a redesigned [Ge-L6-1a - Taishita-Class \(Heavy Freighter\)](#) meant to assist during disaster recovery operations, and it is part of the [Rapid Disaster Response Service](#) line of products.

History

The Jihi variant was created during the creation of the [Rapid Disaster Response Service](#) line of products. It went into production in [YE 42](#).

Description

This is a variant of the [Ge-L6-1a - Taishita-Class \(Heavy Freighter\)](#). This variant has been given the name of Jihi, which means Mercy in [Yamataigo \(邪馬台語\)](#).



Mission Specialization

The following are examples of the missions the Jihi might perform.

Large Scale Evacuation

The Jihi will go to the surface and return to the [Ge-H4-1a - Hachinosu Rescue Station](#). The craft would then return to the surface and get more. In the event that returning to the station is not viable the vessel will engage its [Geshrinari Hyperspace Fold Drive](#) and proceed to a predetermined rendezvous point.

Resupply

The Jihi will provide emergency supplies to the surface. Holds will be preloaded with resources need for those on the surface.

Construction

The Jihi will deploy [Star Army Refugee Facilities](#) in preparation of refugees. The crew both human and android will deploy the various components. A Jihi can carry the equipment for up to four Refugee camps. Using the A Holds. The B Holds would be loaded with provisions and vehicles for use by the refugees.

Appearance

The *Jihi-Class* vessel, which is a variant of the [Ge-L6-1a - Taishita-Class \(Heavy Freighter\)](#), is characterized by a rectangular shape with a tapered bow. Two wings extend from the rear on either side, with two [turbo-plasma drives](#) attached to each wing. Small craft launch from two extended domes on the top of the ship near the bow. Twelve [graviton engines](#) are placed on the bottom of the ship to assist with take-off and landing in various atmospheres.

Statistics and Performance

See the statistics for the [Ge-L6-1a - Taishita-Class \(Heavy Freighter\)](#) for further details on ship statistics, layouts and other details not covered here.

General

General Statistics for the <i>Ge-L6-2a</i>	
Year Introduced	YE 42
Class/Nomenclature	Ge-L6-2a
Designers	Tamahagane Corporation R&D
Manufacturer	Geshrinari Shipyards
Pricing	300,000

Passengers

Crew: 50 operators are recommended, 35 are required.

Androids: 200 [EM-J2-1a Geboku Android \(Basic\)](#)

Maximum Capacity: There are accommodations for 1,200 people. In an emergency evacuation the cargo holds are equipped with fabric seats. This allows for 1,200 people per hold, for a total of 8,400 people.

Dimensions

- Length: 590 meters (1936 feet)
- Width: 195 meters (640 feet)
- Height: 60 meters (197 feet)
- Decks: 10 (4 meters each)

OOC Notes

[Nashoba](#) created this article on 2020/02/23 17:11. Artwork by [Nashoba](#).

Products & Items Database	
Product Categories	starships
Product Name	Jihi-Class Freighter
Nomenclature	Ge-L6-2a
Manufacturer	Geshrinari Shipyards
Year Released	YE 42
Price (KS)	300,000.00 KS

From:

<https://wiki.starmy.com/> - **STAR ARMY**

Permanent link:

https://wiki.starmy.com/doku.php?id=corp:geshrinari_shipyards:rdrs_taishita_class_freighter

Last update: **2024/02/19 20:51**

