

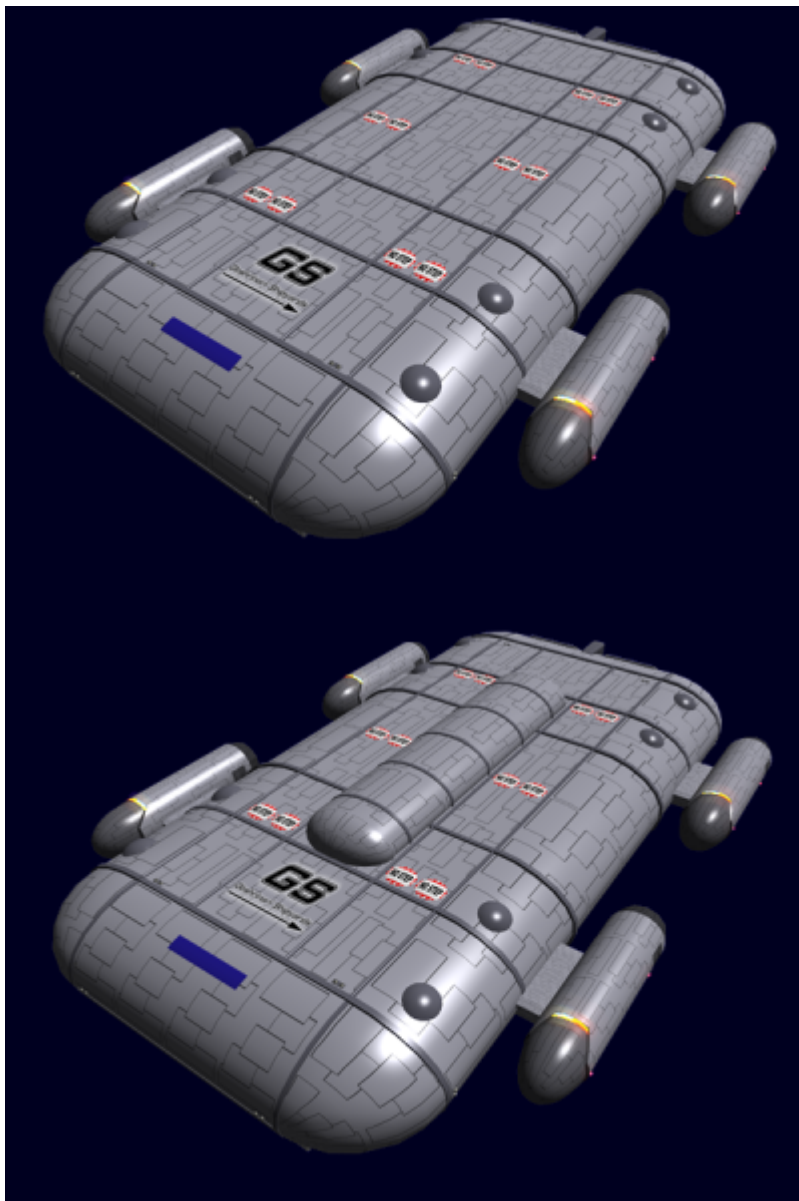
Ge-L4-1a - Sessou-Class Medium Freighter

The Ge-L4 is a medium size freighter, designed to carry as much cargo as possible with few passengers. It became available in [YE 33](#). The version of this ship re-designed for disaster recovery operations is the RDRS Ge-L4-1c - Sessou-Class Medium Freighter.

GS

Geshrinari Shipyards

A Yamahagane Company



About the Sessou

The Sessou *Integrity* is a freighter intended for commercial shipping. It is the largest freighter that [Geshrinari Shipyards](#) currently offers. The design for the Sessou focuses on maximizing its cargo carrying capacity. It comes in two versions the 1a and 1b. The only difference is the 1b is equipped with a large container for hauling liquids in bulk.

History

When [Geshrinari Shipyards](#) became part of [Tamahagane Corporation](#) the corporation realized that to compete with some of the other companies, they needed larger ships to move their goods, and to carry stuff for other people.

Appearance

The Sessou-class is a rounded rectangle which helps it with aerodynamics. The four turbo plasma drives are readily apparent attached to their pylons. There cargo doors on the front, rear and sides. There are two airlocks visible on the bow, on either side of the cargo doors. There is one airlock on the stern located on the top of the ship.

Statistical Data

General

- Class: *Sessou*-class
- Nomenclature: Ge-L4-1a
- Type: Freighter, Medium
- Designers: [Geshrinari Shipyards](#)
- Manufacturer: [Geshrinari Shipyards](#)
- **Price:** 150,000 [KS](#) (Without customization)

Crew and Accommodations

Crew: 32 (Can be operated by a single person) **Passengers:** 20 Maximum Capacity: 72 There are accommodations for 72 personnel with double occupancy. **Emergency Capacity:** 144 people can fit aboard in an emergency, but the ship would be extremely cramped.

Dimensions

- Length: 220 meters (721.6 feet)
- **Width (Fuselage):** 110 meters (360.8 feet)
- **Width (Overall):** 150 (492 feet)
- **Height: 1a** 30 meters (98.4 feet)
- **Height: 1b** 38 meters (124.64 feet)
- Decks: 7 (4 meters each)

Speeds

The *Sessou* is a not built for agility.

- **Atmospheric:** 2,4250 km/h, or 1,522.4 mph Mach 2
- **Combined Field System/Continuum Distortion Drive:**
 - **Minimum:** Resting motionless
 - **Sublight:** .3c (~89,937 kilometers per second) (~55,884 miles per second)
 - **Maximum Speed:** 18,750c (~2.14 ly/h)
- **Hyperspace Drive:** 394,470c (0.75 ly/m)

Durability and Maintenance

Service Lifespan: Estimated 20 years of constant use, possibly longer with refits.

Refit Cycle: Frequent minor updates through refits once every four to five years.

Damage Capacity

See [Damage Rating \(Version 3\)](#) for an explanation of the damage system.

- Hull: 16
- Shields: 20 (Threshold 2)

Inside the Sessou-Class



The *Sessou* has space for seven decks, but there are only two decks that run the length of the ship. They are located on the top of the ship.

Deck 1

- [Geshrinari Large Bridge](#)
- [Geshrinari Standard Computer Room](#)
- 2 [Geshrinari Owner's Suite](#)
- 10 [Geshrinari Standard Crew Quarters](#)
 - 2 [Geshrinari Common Bath](#) - ten person
 - 2 [Geshrinari Common Toilet](#) - ten person
- [Geshrinari Lounge](#)
- 10 [Geshrinari Passenger Quarters](#)
- [Geshrinari Dining Room](#)
 - [Geshrinari Galley](#)
 - [Geshrinari Scullery](#)
- [Geshrinari Standard Engineering](#)
- 2 [Geshrinari Standard Shuttle Bay](#) 20m x 20m x 10m
- [Geshrinari Airlock](#)

Deck 2

- 5 [Geshrinari Standard Crew Quarters](#)
 - 1 [Geshrinari Common Bath](#) - ten person
 - 1 [Geshrinari Common Toilet](#) - ten person
- 10 [Geshrinari Passenger Quarters](#)
- [Geshrinari Wardroom](#)
- [Geshrinari Fitness Center](#)
- [Geshrinari Medical Bay](#)
- 2 [Geshrinari Ship's Laundry](#)
- [Geshrinari Fabrication Area](#)
- [Geshrinari Life Support Room](#)
- [Geshrinari Standard Engineering](#)
- 2 [Geshrinari Standard Shuttle Bay](#) 20m x 20m x 10m

Cargo Hold

There are eight cargo holds in the *Sessou*. They have all the standard features of a [Geshrinari Cargo Bay](#). They occupy four decks worth of space. There are four lifts capable of transferring x-large [SSCC](#)'s.

Hold	Location	Dimensions ¹⁾	SSCC capacity		
1	Forward (Lower)	40m x 80m x 9m	1,024 (medium)	512 (large)	256 (x-large)
2	Port (Lower)	120m x 50m x 9m	1,920	960	480

Hold	Location	Dimensions ¹⁾	SSCC capacity		
3	Starboard (Lower)	120m x 50m x 9m	1,920	960	480
4	Stern (Lower)	40m x 80m x 9m	1,024	512	256
5	Forward (Upper)	40m x 80m x 9m	1,024	512	256
6	Port (Upper)	120m x 50m x 9m	1,920	960	480
7	Starboard (Upper)	120m x 50m x 9m	1,920	960	480
8	Stern (Upper)	40m x 80m x 9m	1,024	512	256
Total Overall			11,776	5,888	2,940

Below Deck

This is the remaining deck space. It houses the mechanisms for the landing gear , the cargo doors, and the pumps, valves and connectors for the liquid storage tank. It is also where the two forward [Geshrinari Airlocks](#) are located.

Systems

Ge-L4-H3300 - Armored Hull

The armored hull of the *Sessou* is a [GE-T1-H3300 - Spacecraft \(DO\) Hull Construction](#).

Ge-L4-E3300 - Computer system

The *Sessou* is fitted with a [Ge-Y2-E3300 - Hogosha Quantum Computer System](#) for all command and control functions. It is also equipped with a [Geshrinari Psionic Signal Controller](#).

Ge-L4-E3301 - Sensors

The *Sessou* is equipped with a [Ge-Y2-E3301 - Standard Starship Sensors](#).

Ge-L4-E3303 - Communications

The *Sessou* is equipped with a [Ge-Y2-E3302 - Communications Suite](#) for external communications. It is equipped with a [Ge-Y1-E3103 - Intercom System](#) for internal communications.

Ge-L4-E3304 - Fire Control

The *Sessou* is outfitted with a [Ge-Y2-E3306 - Fire Control System](#) to control whatever weaponry it is

equipped with.

Ge-L4-V3600 Life Support

The *Sessou* is equipped with a [Ge-Y1-V3100 - Life Support System](#) to provide life support for the passengers and crew.

Emergency

The *Sessou* has all the standard Emergency systems available:

- [Ge-Y1-E3104 - Automatic Fire Suppression System](#)
- [Geshrinari Blast Shutters](#)
- 16 [Ge-X3300 - Type 33 Escape Pods](#)

Ge-L4-P33xx - Propulsion

The *Sessou* is equipped with a variety of engines for specific tasks.

FTL

For FTL travel the is equipped with a:

- 1 [Geshrinari Hyperspace Fold Drive](#)
- 4 [Geshrinari Continuum Distortion Drive](#) nacelles

STL

The *Sessou* is equipped with four [Geshrinari Turbo Plasma Drives](#) mounted pylons which allow them to be rotated up to 180 degrees.

Atmospheric

For safe operation during landings and takeoff the *Sessou* is equipped with a pair of [Geshrinari Graviton Engine](#). In an emergency the [Geshrinari Turbo Plasma Drives](#) can be used for VTOL operation.

Docking and Station keeping

The *Sessou* is equipped with twelve pairs of [Geshrinari Maneuvering Thrusters](#), which are used for attitude control, docking maneuvers, and station keeping.

Ge-L4-S3300 - Shielding

The *Sessou* is equipped with a [Geshrinari Combined Field System](#) for protection.

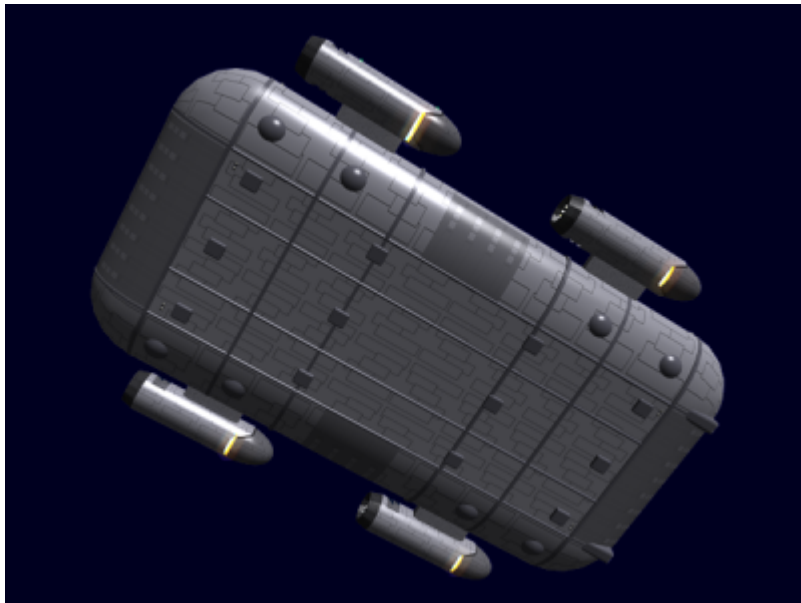
Ge-L4-G33xx - Generators

The *Sessou* uses a [Geshrinari Aether Generator](#) for supplying primary power.

It has a pair of [Geshrinari Fusion Generator](#) which serve as emergency power. It carries enough fuel to operate the backup generator for 30 days.

Ge-L4-M3300 - Landing Gear

The *Sessou* is equipped with twelve landing pads. They are pneumatically driven and are used to raise or lower the ship, and level it.



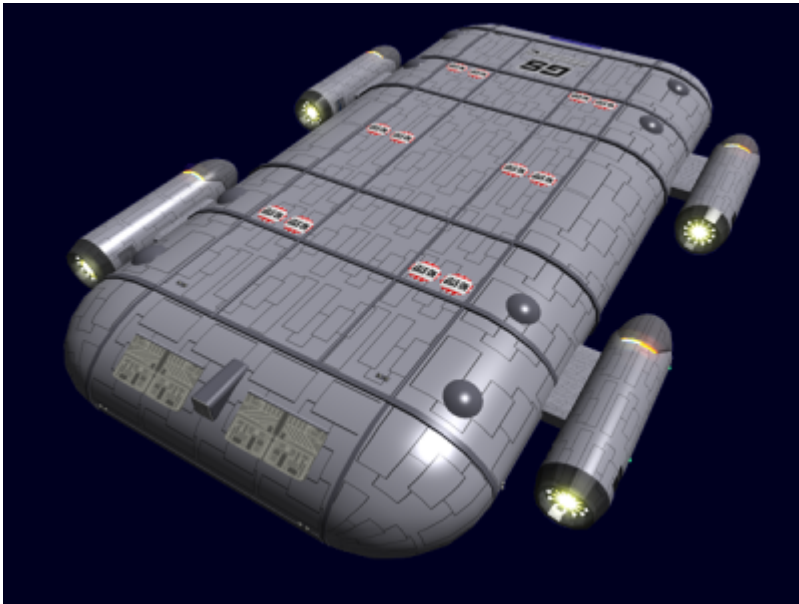
Ge-L4-M3301 - Liquid Storage Tank

The *Sessou-1b model* is equipped with a large storage tank (LST) on the top of the ship. The LST is insulated and temperature controlled. The LST has a total capacity of 15,707,960 liters. The tank is subdivided into six segments, which allows it to hold different liquids if required.

Segment Capacity

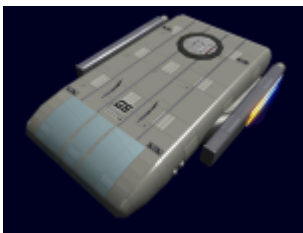
- Segments 2-5, each hold 3,141,592 liters
- Segments 1 & 6, each hold 1,570,796 liters

Vehicles



The *Sessou* has four shuttle bays, and comes with the following shuttles

- 2 [Ge-T1-1A - Transatmospheric Shuttle](#) or



- 2 [Ge-T1-2a - Hikiuma-Class Shuttle](#)



Weaponry

The *Sessou* does not come with weapons, but it has sixteen mounting points where they can be installed. The following weapons can be installed at an additional cost.

- [Ge-Y1-W3100 - Anti-Ship Turrets](#) - SDR 2, 2,750 KS
- [Ge-Y2-W3300 - Anti-Armor Turrets](#) - Tier 9, Heavy Anti-Mecha /[ADR 5](#), 1,750 KS
- [Ge-Y2-W3301 - Suisei Active Anti-Missile System](#) - [ADR 1/2](#), 2,500 KS
- [Ge-C1-W3302 - Anti-Fighter Turret](#) - [ADR 4](#), 1,750 KS

Equipment

- 2 [EM-G17-1a Basic Tool Kit](#)
- 2 [EM-G17-2a Repair Kit](#)
- 2 [EM-G18-1a Ship Hull Patch Kit](#)

Disaster Recovery Version

The redesigned Disaster Recovery version of this ship is the RDRS Ge-L4-1c - Sessou-Class Medium Freighter, pictured below:



The [Rapid Disaster Response Service](#) version of the Sessou-Class was designed for quick and expedient deployment of construction materials, survival equipment, droids for disaster relief and other materials required during a crisis.

OOC Notes

Authored by [Nashoba](#) Sep 28, 2011 Artwork by [Nashoba](#)

Submission Approved by [Kyle](#) on Oct 03, 2011. [Forum Thread](#).

Products & Items Database	
Product Categories	starships
Product Name	Sessou-Class Medium Freighter
Nomenclature	Ge-L4-1A
Manufacturer	Geshrinari Shipyards
Year Released	YE 33
Price (KS)	150 ,000.00 KS

¹⁾

length x width x height

From:
<https://wiki.stararmy.com/> - **STAR ARMY**

Permanent link:
https://wiki.stararmy.com/doku.php?id=corp:geshrinari_shipyards:medium_freighter

Last update: **2024/02/21 18:50**

