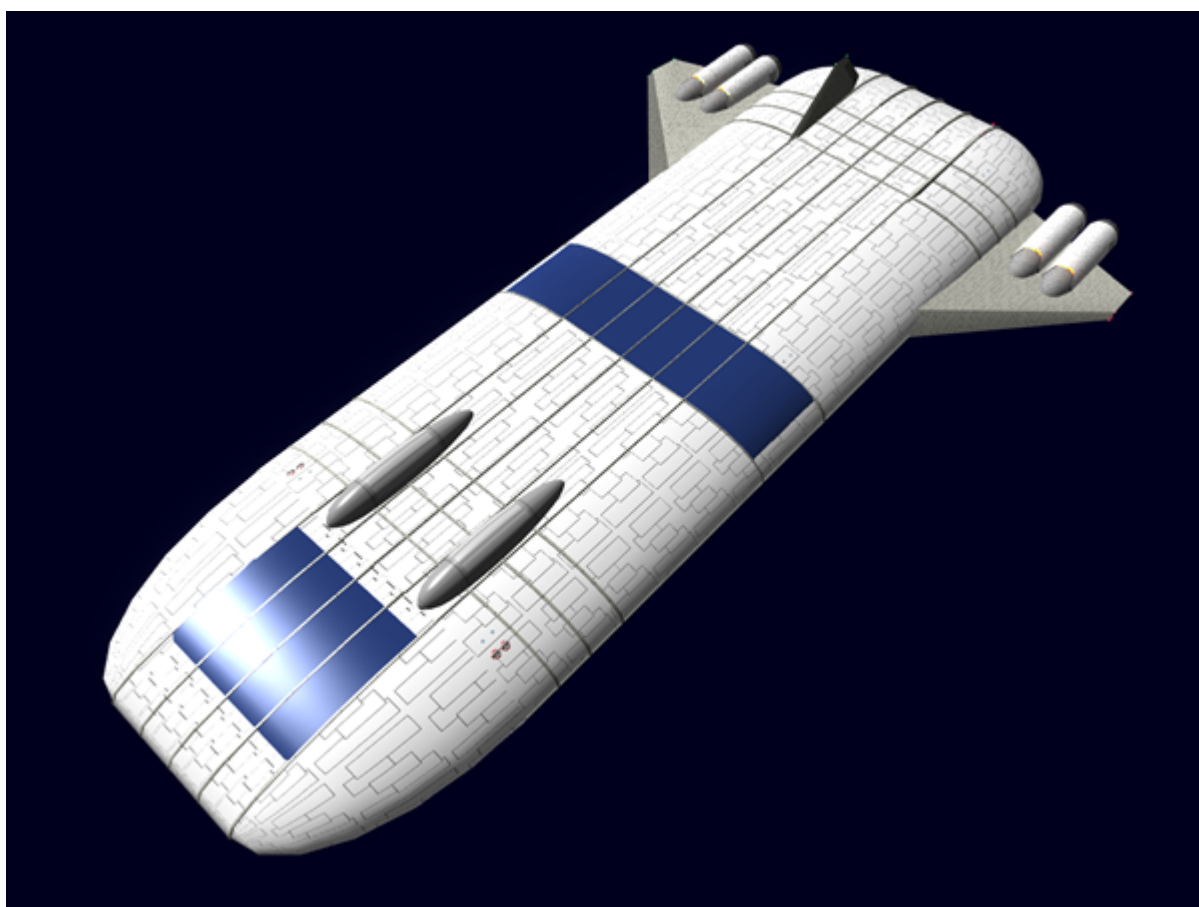


Ge-L6-2a - Matsuri-Class (Liner)



The Matsuri-Class Liner is a re-purposed [Ge-L6-1a - Taishita-Class \(Heavy Freighter\)](#) that has been overhauled to make an opulent liner.



History

Work on the Matsuri-class came about after the end of the emergency food shipment program that the Geshrinari Shipyards corporation was working on, on behalf of the [Yamatai Star Empire](#). These liners came into use in [YE 35](#), approximately a year after the initial release of the [Ge-L6-1a - Taishita-Class \(Heavy Freighter\)](#) in [YE 34](#).

Description

The Matsuri's are, essentially, transport ships reconfigured to be 'luxury' transports.

Appearance

The shape of the *Matsuri-Class* is that of a rounded rectangle with a tapered bow. It has two wings to which the four [turbo-plasma drives](#) are attached. The wings and the two vertical stabilizers help with the ship's performance in the atmosphere. On the top of the hull are two rounded protrusions which is where the ship's small craft for cargo transfer are housed. Additionally on the top the eight escape pod launch points can be seen by their covers. On the bottom of the ship the twelve [graviton engines](#) used for lift off and landing and low level atmospheric travel can be seen.

Statistics and Performance

Statistics and performance information can be found below:

General

General Statistics for the <i>Matsuri-class</i>	
Year Introduced	YE 35
Class/Nomenclature	Ge-L6-2a
Designers	Tamahagane Corporation R&D
Manufacturer	Geshrinari Shipyards
Maintenance Cycle	Frequent minor updates through refits once every four to five years.
Lifespan	Estimated 20 years of constant use, possibly longer with refits.
Pricing	300000

Passengers

Crew: 100 operators are recommended, 75 are required. Passengers: 2500 passengers are supported. Maximum Capacity: There are accommodations for 260 personnel with double occupancy. Emergency Capacity: 5000 people can fit aboard in an emergency, but the ship would be extremely cramped.

Dimensions

Length: 590 meters (1936 feet) Width: 195 meters (640 feet) Height: 60 meters (197 feet) Decks: 10 (4 meters each)

Propulsion and Range

The *Matsuri* is not built for agility.

- Atmospheric: 2,4250 km/h, or 1,522.4 mph (Mach 2)
- [Combined Field System/Continuum Distortion Drive](#):
 - Minimum: Resting motionless
 - Sublight: .3c (~89,937 kilometers per second) (~55,884 miles per second)
 - Maximum Speed: 18,750c (~2.14 ly/h)
- Hyperspace Drive: 394,470c (0.75 ly/m)

Damage Capacity

See [Damage Rating \(Version 3\)](#) for an explanation of the damage system.

- Hull: 32
- Shields: 40 (Threshold 4)

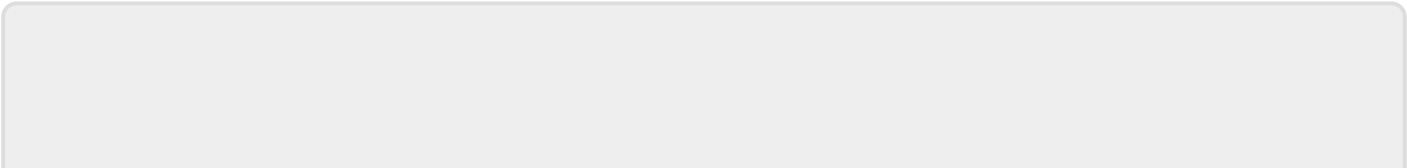
Systems

- [Ge-H2-E3300 - Senkun Dual Quantum Computer System](#)
- [Ge-Y2-E3301 - Standard Starship Sensors](#)

OOC Notes

- Artwork by [Nashoba](#).

Products & Items Database	
Product Categories	starships
Product Name	Matsuri-Class (Liner)
Nomenclature	Ge-L6-2a
Manufacturer	Geshrinari Shipyards
Year Released	YE 35
Price (KS)	300,000.00 KS
Star Army Logistics	
First Used	YE 35



Last update:

2024/02/19 20:56 corp:geshrinari_shipyards:matsuri-class_liner https://wiki.stararmy.com/doku.php?id=corp:geshrinari_shipyards:matsuri-class_liner

From:

<https://wiki.stararmy.com/> - **STAR ARMY**

Permanent link:

https://wiki.stararmy.com/doku.php?id=corp:geshrinari_shipyards:matsuri-class_liner



Last update: **2024/02/19 20:56**