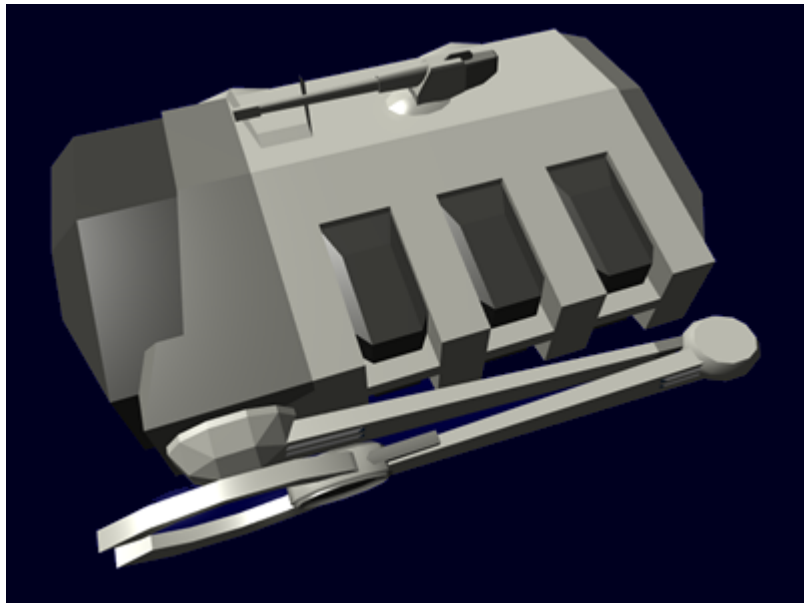


Ge-Y1-M3103 - Mining Module

The Ge-Y1-M3103 - Mining Module is an option for the [Ge-Y1-1a - Henkei-class Starship](#) that was first manufactured in [YE 31](#).



Statistical Data

General

Class: Module Nomenclature: Ge-Y1-M3103p/s Type: Mining Designers: [Geshrinari Shipyards](#)
Manufacturer: [Geshrinari Shipyards](#) **Price:** 6,500 KS (Without customization)

The only difference between the Ge-Y1-M3103p and the Ge-Y1-M3103s is orientation. They contain the same equipment but are opposite in physical arrangement.

Dimensions

Length: 30 meters (269 feet) Width: 18 meters (164 feet) Height: 9 meters (29.52 feet) Decks: 2 (8 meters each)

Features

Catwalks

There is a network of catwalks that go around the module to allow access from the upper deck to the floor of the module.

Interim Storage

The Ge-Y1-M3103 has an area for storing processed ores. It is used to hold the material until it can be transferred to the cargo bay in the [Henkei](#). This area is 10m (32.8') by 2.5m (8.2'). A loading arm picks up the material and stacks automatically.

Systems

Emergency Systems

- Auto fire suppression (AFS) - The AFS is available in all parts of the [Henkei](#). When activated it deploys a fire suppressing gas. This gas reduces the available oxygen so personnel in an affected area should leave, or don a portable air tank. Each compartment has sensors to detect smoke and or heat. When activated the system triggers a shipwide alarm over the intercom giving the location of the fire.
- Chemical extinguishers - These are present for manual use on electrical and metal fires.

Ge-Y1-A3104p/s - Armored Hull

The Ge-Y1-M3103 module uses a [Geshrinari Shipyards](#) designed armor hull. The hull is composed .5 meters of overlapping [durandium plating](#). The frame of the module is [Durandium Alloy](#).

Ge-Y1-E3104 - Intercom System add-on

The Ge-Y1-E3104 connects to the [Ge-Y1-E3103 - Intercom System](#) aboard the [Henkei](#). It allows all compartments on the module to tie into the system.

Ge-Y1-G3101 - Fusion Reactor

The Ge-Y1-M3103 module features the same Ge-Y1-G3101 Fusion reactor as the secondary generator on the [Henkei](#). This reactor provides the power necessary to run the systems in the module.

Ge-Y1-G3102 Matter Collection System

The Ge-Y1-M3103 module features a [Geshrinari Matter Collection System](#). This gathers fuel for use by the reactor in the module. The MCS intake on the forward panel of the module.

Ge-Y1-M3105 - Module Connection Points

The Ge-Y1-M3105 is the standard mating unit for connecting to the Ge-Y1-M3104 on the [Henkei](#). There are two of these on the module they provide the physical, and electrical connectivity for the to the [Henkei](#).

Ge-Y1-W3105 - Mining Laser

This laser fires a continuous beam that allows the module to cut asteroids into smaller pieces to feed into the ore processors.

- 3 Armor scale

Ge-Y1-M3101 - Ore Processor

There are three feeders into the processor. The ore is brought in where it crushed, separated and then [smelted](#).

From:
<https://wiki.stararmy.com/> - **STAR ARMY**

Permanent link:
https://wiki.stararmy.com/doku.php?id=corp:geshrinari_shipyards:henkei-class_starship:ge-y1-m3103&rev=1688947691

Last update: **2023/12/21 01:14**

