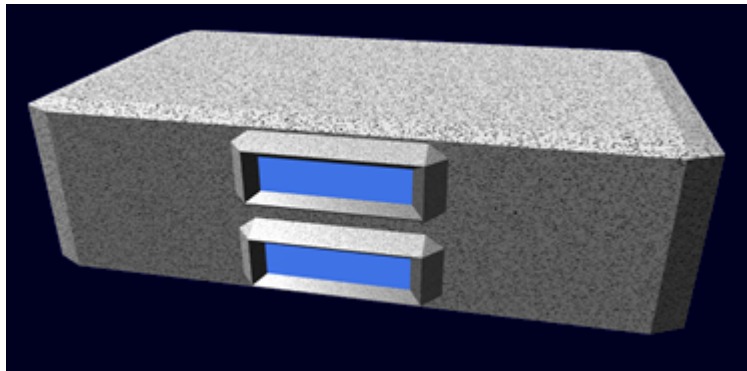


Ge-Y1-M3101 - Passenger Module

The Ge-Y1-M3101- Passenger Module is an option for the [Ge-Y1-1a - Henkei-class Starship](#) that was first manufactured in [YE 31](#).



Statistical Data

General

Class: Module Nomenclature: Ge-Y1-M3101 Type: Passenger Designers: [Geshrinari Shipyards](#)
Manufacturer: [Geshrinari Shipyards](#) **Price:** 5,500 KS (Without customization)

Dimensions

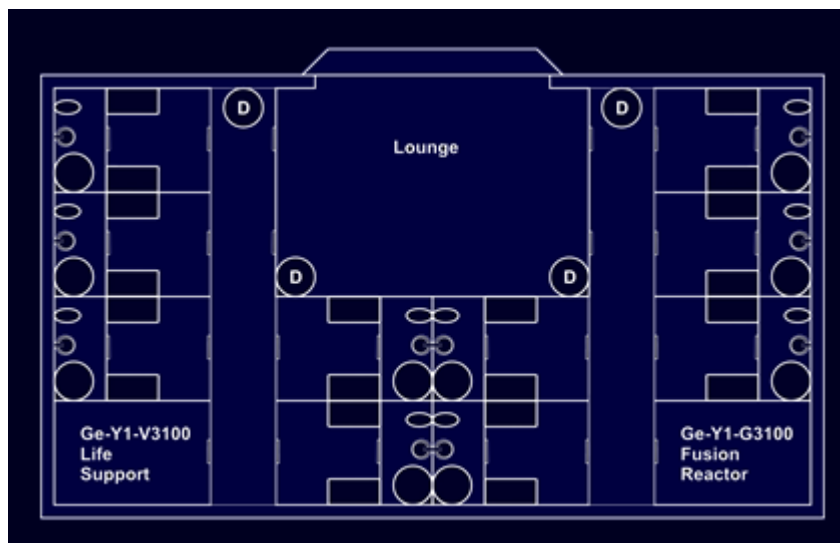
Length: 30 meters (269 feet) Width: 18 meters (164 feet) Height: 9 meters (29.52 feet) Decks: 2 (8 meters each)

Crew and Accommodations

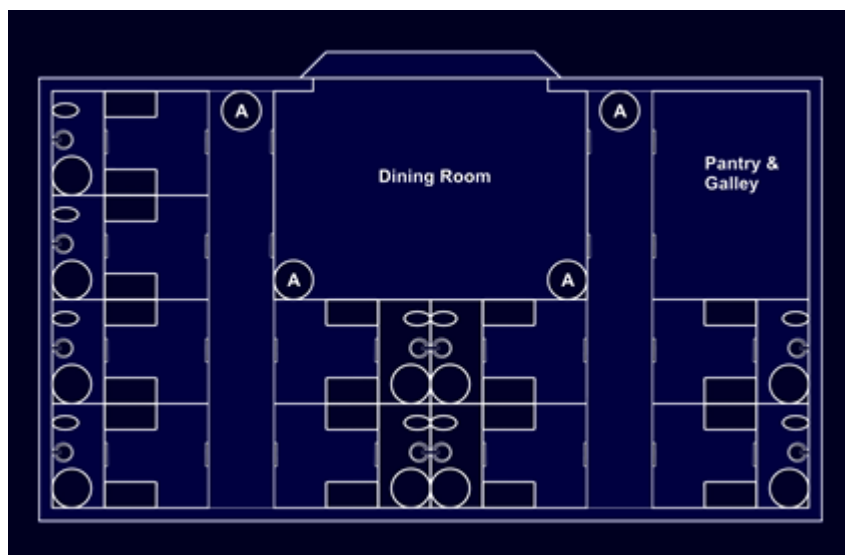
Passengers: 40 Maximum Capacity: There are accommodations for 40 personnel **Emergency Capacity:** 80 people can fit aboard in an emergency, but the module would be extremely cramped.

Deck Plans

Upper Level



Lower Level



Features

Dining Room

The dining room of the Ge-Y1-M3101 module is located on the lower deck. It is physically under the lounge and spiral staircases connect the two.

Lounge

The Ge-Y1-M3101 module has a lounge located on the upper deck. It features a spacious bay window, spiral staircases connect it to the dining room, and it has two small bathrooms.

Pantry & Galley

This space augments the ship's galley by providing a place where meals can be kept warm, on depending on the type of meal actually prepared. It also has storage of beverages, and snacks for the passengers.

Passageways

Horizontal movement on the [Heneki](#) is by standard passageways similar to these [passageways](#).

Vertical movement is done via spiral staircases.

Staterooms

Each stateroom is intended for dual occupancy. The dimensions are 4m x 6m including the bathroom. There are two folding beds, that convert into sofas. A pair of small chairs and table complete the accessories.

Systems

Emergency Systems

The module is equipped with the [Ge-Y1-E3104 - Automatic Fire Suppression System](#) In addition chemical extinguishers are present for manual use on electrical and metal fires.

Ge-Y1-A3102 - Armored Hull

The Ge-Y1-M3101 module is constructed using the [GE-T1-H3100 - Spacecraft \(DD\) Hull Construction](#) designed armor hull.

Ge-Y1-E3104 - Intercom System add-on

The module is equipped with the [Ge-Y1-E3104 - Intercom System add-on](#) which allows the module to tie into the ship.

Ge-Y1-E3105 - Emergency Beacon

The Ge-Y1-E3105 is a distress beacon that automatically activates if the module is ejected. It broadcasts on subspace and normal radio.

Ge-Y1-G3100 - Fusion Reactor

The module is equipped with a [Geshrinari Fusion Generator](#) for use incase the module is ejected. It has enough fuel to run the reactor for thirty days.

Ge-Y1-M3105 - Module Connection Points

The module is equipped with two [Ge-Y1-M3105 - Module Connection Points](#) for connectivity.

Ge-Y1-V3100 - Life Support System

The module is equipped with the [Ge-Y1-V3100 - Life Support System](#), it expands the life support aboard the main ship and provides full life support in the event the module is jettisoned.

From:
<https://wiki.stararmy.com/> - **STAR ARMY**

Permanent link:
https://wiki.stararmy.com/doku.php?id=corp:geshrinari_shipyards:henkei-class_starship:ge-y1-m3101

Last update: **2023/12/21 04:21**

